



4 Montagu Road
Datchet | Berkshire | SL3 9DJ

 FINE & COUNTRY

4 MONTAGU ROAD



Set on one of Datchet's most sought-after roads, this elegant and beautifully presented home is arranged over three spacious storeys.



KEY FEATURES

The property offers four generous double bedrooms, complemented by two stylish bathrooms, alongside two cosy and versatile reception rooms ideal for both relaxation and entertaining.

At the heart of the home is a stunning open-plan kitchen and dining space, featuring a contemporary design with a central island, dedicated dining area, and a comfortable snug. This impressive space benefits from multiple skylights, flooding the room with natural light, and provides direct access to the garden, perfect for seamless indoor-outdoor living and al fresco dining.

Externally, the secluded rear garden is predominantly laid to lawn, with a patio area positioned just off the dining space, creating an ideal setting for entertaining. To the front, the property offers off-street parking for two vehicles.

Ground Floor

Upon entering the property, you are welcomed by an inviting hallway featuring elegant wood flooring, which flows seamlessly through to the front reception room. This charming space boasts an Edwardian feature fireplace, high ceilings, and a beautiful bay window, creating a bright yet cosy setting.

The second reception room, positioned just off the open-plan kitchen, offers excellent versatility and is ideal as a TV room, playroom, or additional living space.

The true centrepiece of the home is the striking open-plan kitchen and dining area. Designed with both style and functionality in mind, it features a central island with seating, a dedicated dining area, and a comfortable snug. Two sets of patio doors provide direct access to the garden, making it perfect for al fresco dining and entertaining. Multiple large skylights flood the space with natural light, while the continuation of the wood flooring and the addition of underfloor heating enhance both comfort and cohesion.

A conveniently located guest WC and separate utility room, accessed from the entrance hallway, complete the ground floor accommodation.













SELLER INSIGHT

“ The current owners were immediately drawn to this beautiful home for its elegant period features, high ceilings, and prime village location, offering the perfect balance of character and convenience. One of the highlights has always been the scenic 20-minute walk along the river into central Windsor, combining peaceful village living with easy access to the town.

Over the years, the home has been thoughtfully enhanced to suit modern family life. At its heart is a wonderful open-plan living and entertaining space, centred around the kitchen and dining area where friends and family naturally gather around the large island. The owners particularly love the way the original hallway and front door lead through beautiful arched doorways into the newer extension, seamlessly blending the home's period charm with contemporary design.

Upstairs, the property offers four generous double bedrooms, including a spacious principal suite with a luxurious en-suite featuring both a freestanding bath and separate shower. Throughout the home, carefully chosen details such as Corston lighting, veined quartz waterfall worktops and Crittall-style doors add a refined, modern finish while maintaining the property's character.

Natural light fills the home thanks to skylights, floor-to-ceiling windows and glazed doors, creating bright, welcoming spaces, while underfloor heating and modern insulation ensure year-round comfort.

Outside, the private garden with mature planting and original brick walls provides a peaceful retreat. The courtyard with its BBQ and pizza oven has been perfect for entertaining, with the garden easily accommodating gatherings and celebrations over the years.

The location has proved ideal for family life, with excellent local schools, a train station just a two-minute walk away offering direct links to London, and Windsor only a short drive away. The road itself has a wonderfully friendly atmosphere, with welcoming neighbours and a strong sense of community that the owners have truly cherished.”*

* These comments are the personal views of the current owner and are included as an insight into life at the property. They have not been independently verified, should not be relied on without verification and do not necessarily reflect the views of the agent.







KEY FEATURES

First Floor

The first floor comprises two well-proportioned double bedrooms and two bathrooms. The principal bedroom, finished with elegant wood flooring, benefits from an impressive ensuite featuring a large walk-in shower, freestanding bath, and double vanity unit.

A contemporary family bathroom is also accessed from the landing and includes a WC and a bathtub with shower over.

Second Floor

The second floor offers two further well-proportioned double bedrooms, with the front bedroom enhanced by a charming Edwardian feature fireplace, adding character and period appeal.













KEY FEATURES

Outside

The property enjoys a beautifully secluded rear garden, predominantly laid to lawn, with a patio area positioned just off the dining space, ideal for outdoor entertaining and al fresco dining with family and friends.

To the front, the property benefits from off-street parking for two vehicles.

Location

Located in the picturesque Thameside village of Datchet, just east of historic Windsor, this property enjoys a charming and convenient setting. The village itself offers a traditional green, an array of local shops for daily essentials, cosy pubs, and popular restaurants, perfectly blending community charm with everyday practicality.

Travel connections are exceptional. The M4 (Junction 5) is just 1.5 miles away, offering swift access to the M25, Heathrow Airport, Central London, and the wider motorway network. For commuters, Datchet Station provides regular rail services to London Waterloo, while Windsor Central connects to London Paddington via Slough on the fast and modern Elizabeth Line.

Families are well catered for, with a wide selection of highly regarded schools nearby. Options include prestigious independents such as St George's, Upton House, Eton College, and Eton End, as well as respected state schools including Datchet Montessori School, St Mary's, and Windsor Boys' and Girls' Secondary Schools.



INFORMATION



Services, Utilities & Property Information

Local Authority: Windsor & Maidenhead

Tenure: Freehold | Council Tax Band F | EPC rating D

Construction Type: Brick

Utilities: Water: Thames Water, Electricity: EON, Gas: EON

Mobile Phone Coverage: 4G is predicted to be in the area. We advise that you check with your provider.

Broadband Availability: FTTP Ultrafast available in your area. We advise that you check with your provider.

Construction Type: Brick

Off Road Parking Spaces: 2

The property has been extended/alterd, with planning permission obtained. Buyers are advised to verify all planning and building regulation approvals through their solicitor.

Directions: SatNav <https://what3words.com/>

Postcode: SL3 9DJ what3words: ///panel.fits.broom

Viewing Arrangements

Strictly via the vendors sole agent Fine & Country Windsor and Englefield Green, Louis Byrne on Tel Number +44 (0)1753 463 633

Website

For more information visit Fine & Country Windsor and Englefield Green windsor@fineandcountry.com

Opening Hours:

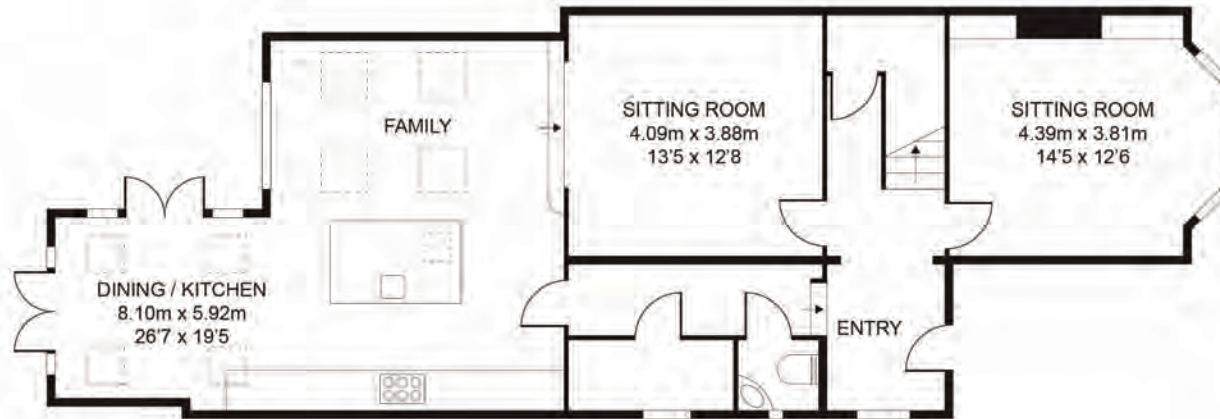
Monday to Friday - 9.00 am - 5.30 pm

Saturday - 9.00 am - 4.30 pm

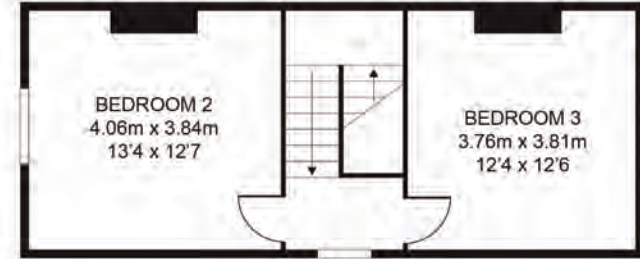
Sunday - By appointment only



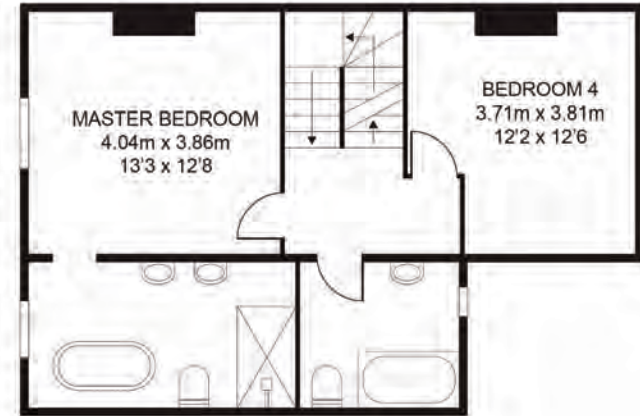
Approx Gross Internal Area 2009 sq ft - 186.64 sqm



GROUND FLOOR
1009 sq ft - 93.74 sqm



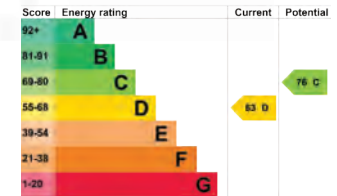
SECOND FLOOR
406 sq ft - 37.72 sqm



FIRST FLOOR
594 sq ft - 55.18 sqm

Montagu Road ,SL3

Disclaimer: Floor plan measurements are approximate and for illustrative purposes only.



Whilst we carry out our due diligence on a property before it is launched to the market and we endeavour to provide accurate information, buyers are advised to conduct their own due diligence. Our information is presented to the best of our knowledge and should not solely be relied upon when making purchasing decisions. The responsibility for verifying aspects such as flood risk, easements, covenants and other property related details rests with the buyer.



FINE & COUNTRY

Fine & Country is a global network of estate agencies specialising in the marketing, sale and rental of luxury residential property. With offices in over 300 locations, spanning Europe, Australia, Africa and Asia, we combine widespread exposure of the international marketplace with the local expertise and knowledge of carefully selected independent property professionals.

Fine & Country appreciates the most exclusive properties require a more compelling, sophisticated and intelligent presentation – leading to a common, yet uniquely exercised and successful strategy emphasising the lifestyle qualities of the property.

This unique approach to luxury homes marketing delivers high quality, intelligent and creative concepts for property promotion combined with the latest technology and marketing techniques.

We understand moving home is one of the most important decisions you make; your home is both a financial and emotional investment. With Fine & Country you benefit from the local knowledge, experience, expertise and contacts of a well trained, educated and courteous team of professionals, working to make the sale or purchase of your property as stress free as possible.

We value the little things that make a home



LOUIS BYRNE

PARTNER AGENT

Fine & Country Windsor
+44 (0)1753 463 633 | +44 (0)7956 271 795
email: louis.byrne@fineandcountry.com

I have over 18 years' experience within the property industry covering areas across the Home Counties and West London regions. At Director level I have gained invaluable knowledge of the industry.

I live locally in Windsor with my partner Aga where I have been a local resident for over ten years. During this time, I have built some great rapport with local business owners and know the area and surrounding villages extremely well. I have a passion for luxury property combined with a passion for providing great customer service. I strongly believe that if you provide a great service, the rest will fall into place via repeat business and word of mouth recommendations. A happy client is my goal from day one.

I love animals, especially dogs and contribute monthly to a well-known animal charity. I also attend the Windsor Dog Show each year which is a fun day and on my doorstep. In my spare time I enjoy road trips with my partner to explore the UK's hidden gems and outdoor walks.

THE FINE & COUNTRY
FOUNDATION

The production of these particulars has generated a £10 donation to the Fine & Country Foundation, charity no. 1160989, striving to relieve homelessness.

Visit fineandcountry.com/uk/foundation

follow Fine & Country Windsor on

 www.facebook.com/FineandcountryWindsorandEnglefieldGreen

 www.instagram.com/fineandcountrywindsor/

 www.linkedin.com/company/fine-&-country/

Fine & Country Windsor
Castle Hill House, 12 Castle Hill, Windsor, Berkshire SL4 1PD
01753 463633 | windsor@fineandcountry.com

