



4 Bedrooms

House - Mid Terrace

Per month

£6,000 Per
"

Located in

Richmond





27 Kelsall Mews

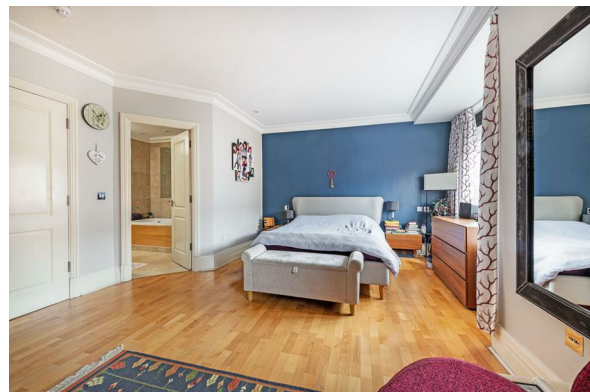
Richmond | | TW9 4BP



Set within this luxury riverside development, a four-bedroom, four-bathroom townhouse with 24 hour concierge, off street parking for three cars, residents gymnasium, sauna and jacuzzi.

27 Kelsall Mews

£6,000 Per month



- Four Bedrooms
- Integral Garage
- Two reception rooms
- 24 hour concierge
- Outstanding local Schools
- Four Bathrooms
- Custom Built Study
- Private Garden
- Residents swimming pool, gymnasium, sauna & jacuzzi
- Excellent transport links

EPC Rating: C

Council Tax Band D

Local Authority

Agents Note: Whilst every care has been taken to prepare these particulars, they are for guidance purposes only. All measurements are approximate and are for general guidance purposes only and whilst every care has been taken to ensure their accuracy, they should not be relied upon and potential buyers/tenants are advised to recheck the measurements.

Energy Efficiency Rating		
	Current	Potential
Very energy efficient - lower running costs		
(92 plus) A		
(81-91) B		
(69-80) C	72	
(55-68) D		
(39-54) E		
(21-38) F		
(1-20) G		
Not energy efficient - higher running costs		
England & Wales		EU Directive 2002/91/EC

30 Radnor Road
TW1 4NQ
Twickenham
TW1 4NQ



jo@teddyproperty.com

02046 384065

30