



HIVE



FOREST PINES
13 LAUREL LANE
RINGWOOD
BH24 2LR



“
Agent's introduction

Guide Price £600,000 - £625,000 A beautifully refurbished four-bedroom bungalow offering stylish, single-level living in a highly convenient location near St Leonards. Featuring a spacious open-plan kitchen/family room with garden views, modern fittings throughout and a principal bedroom with en suite, the property also benefits from a generous garden, ample parking and excellent access to the A31, Ringwood, Ferndown and nearby country parks.





HIVE



The Best
Memories
are made at
Home

WASH
YOUR
HANDS
YOU
BETTER
YOU

HIVE

Property highlights

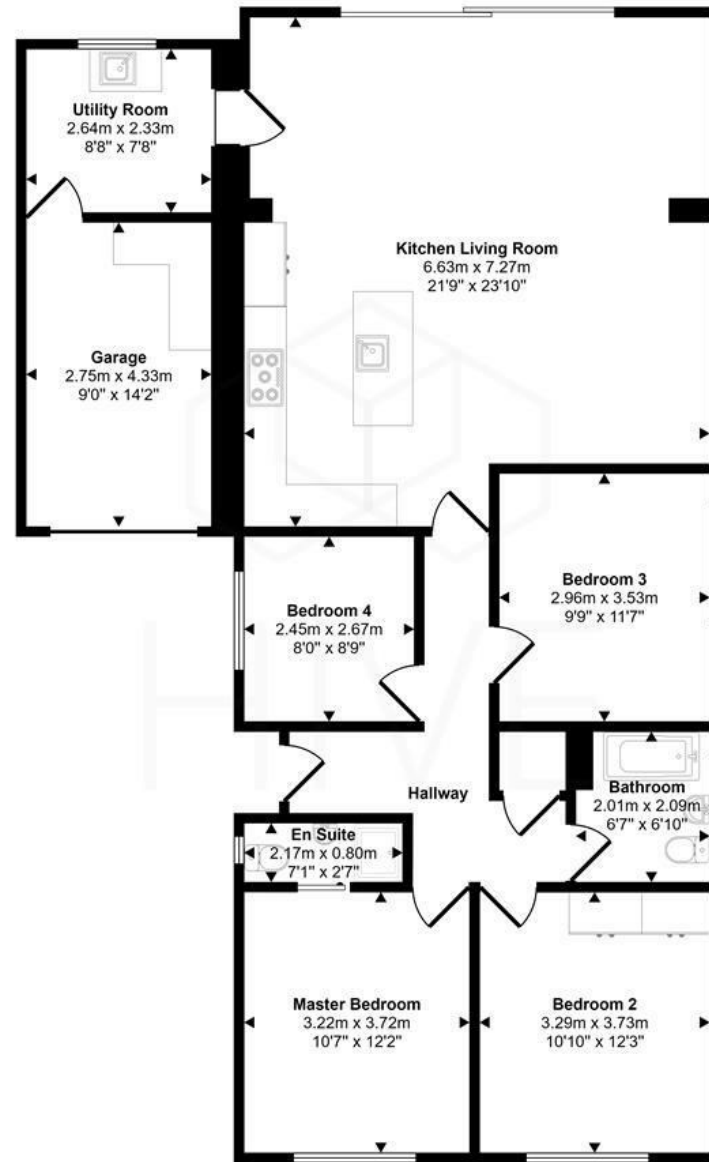
- Recently refurbished to a high modern standard
- Spacious four-bedroom detached bungalow
- Impressive open-plan kitchen/family room
- Triple-track sliding doors opening to the garden
- Principal bedroom with en suite and air conditioning
- Contemporary kitchen with 5-ring gas hob and double oven
- Separate utility room with garage access
- Generous garden with patio and low-maintenance artificial lawn
- Driveway parking for multiple vehicles and covered car port
- Excellent location



HIVE

Floor plan and EPC

Approx Gross Internal Area
128 sq m / 1381 sq ft



Floorplan

Energy Efficiency Rating		Current	Potential
<i>Very energy efficient - lower running costs</i>			
(92 plus) A			86
(81-91) B			
(69-80) C		72	
(55-68) D			
(39-54) E			
(21-38) F			
(1-20) G			
<i>Not energy efficient - higher running costs</i>			
England & Wales	EU Directive 2002/91/EC		

This floorplan is only for illustrative purposes and is not to scale. Measurements of rooms, doors, windows, and any items are approximate and no responsibility is taken for any error, omission or mis-statement. Icons of items such as bathroom suites are representations only and may not look like the real items. Made with Made Snappy 360.





HIVE & Partners Unit F1, Arena Business Centre 9 Nimrod Way, Ferndown, BH21 7UH
01202 122 002 | www.hiveandpartners.co.uk | sales@hiveandpartners.co.uk