



## Hadrians Tower, Newcastle Upon

- STUNNING ONE BEDROOM APARTMENT
- PRIME NEWCASTLE CITY CENTRE LOCATION
- MODERN FITTED KITCHEN
- EXCLUSIVE RESIDENTS' LOUNGE
- CLOSE TO SHOPS, RESTAURANTS AND BARS

- LOCATED IN THE ICONIC HADRIAN'S TOWER
- SPACIOUS OPEN PLAN LIVING AREA
- SECURE ENTRY SYSTEM
- PROFESSIONALLY MANAGED DEVELOPMENT
- NO ONWARD CHAIN

**£155,000**

**Tenure: Leasehold**

**HUNTERS<sup>®</sup>**  
HERE TO GET *you* THERE

# Hadrians Tower, Newcastle Upon Tyne

## DESCRIPTION

\*VIRTUAL TOUR AVAILABLE\*

Situated within the sought-after Hadrian's Tower development in the heart of Newcastle City Centre, this beautifully presented one-bedroom apartment offers contemporary living within one of the city's most recognisable residential landmarks.

Positioned on the fourth floor, the apartment boasts approximately 904 sq ft of well-designed accommodation, finished to a high standard throughout. The open-plan living and kitchen area provides a bright and spacious environment, featuring sleek modern cabinetry, integrated appliances and ample space for both relaxation and dining. Floor-to-ceiling windows allow natural light to flood the apartment, creating a light and airy feel throughout.

The generous double bedroom benefits from fitted mirrored wardrobes and excellent proportions, while the stylish bathroom is fitted with a contemporary suite including a shower over bath arrangement and modern tiling.

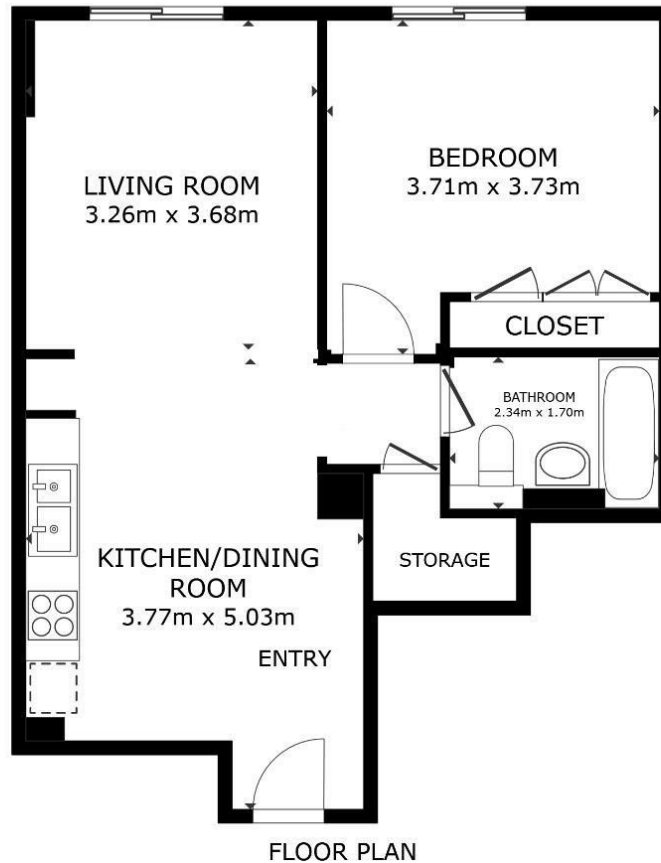
Residents of Hadrian's Tower enjoy access to impressive communal facilities including an exclusive residents' lounge, offering comfortable seating areas, workspaces and social areas within a professionally managed environment.

Located within easy walking distance of Newcastle's business district, universities, shopping facilities, restaurants, bars and excellent transport links, the property is ideally placed for professionals, first-time buyers and investors alike.

Early viewing is highly recommended to appreciate the quality, space and location this exceptional apartment has to offer.



Council Tax: D



GROSS INTERNAL AREA  
FLOOR PLAN 51.2 m<sup>2</sup>  
TOTAL : 51.2 m<sup>2</sup>  
SIZES AND DIMENSIONS ARE APPROXIMATE, ACTUAL MAY VARY.



**Viewing**

Please contact our Hunters Newcastle Central Office on 0191 447 3282 if you wish to arrange a viewing appointment for this property or require further information.

65 Percy Street, Newcastle, NE1 7RN

Tel: 0191 447 3282 Email:

newcastle@hunters.com <https://www.hunters.com>



**ENERGY PERFORMANCE CERTIFICATE**

The energy efficiency rating is a measure of the overall efficacy of a home. The higher the rating the more energy efficient the home is and the lower the fuel bills will be.

Energy Efficiency Rating	Current	Potential	Environmental Impact (CO <sub>2</sub> ) Rating	Current	Potential
Very energy efficient - lower running costs			Very environmentally friendly - lower CO <sub>2</sub> emissions		
(92 plus) A			(92 plus) A		
(81-91) B			(81-91) B		
(69-80) C			(69-80) C		
(55-68) D			(55-68) D		
(39-54) E			(39-54) E		
(21-38) F			(21-38) F		
(1-20) G			(1-20) G		
Not energy efficient - higher running costs			Not environmentally friendly - higher CO <sub>2</sub> emissions		
England & Wales	EU Directive 2002/91/EC		England & Wales	EU Directive 2002/91/EC	

These particulars are intended to give a fair and reliable description of the property but no responsibility for any inaccuracy or error can be accepted and do not constitute an offer or contract. We have not tested any services or appliances (including central heating if fitted) referred to in these particulars and the purchasers are advised to satisfy themselves as to the working order and condition. If a property is unoccupied at any time there may be reconnection charges for any switched off/disconnected or drained services or appliances - All measurements are approximate.

**THINKING OF SELLING?** If you are thinking of selling your home or just curious to discover the value of your property, Hunters would be pleased to provide free, no obligation sales and marketing advice. Even if your home is outside the area covered

