



## Ramsholt Close, North Waltham - RG25 2DG

£475,000 Freehold

3 BEDROOMS • VILLAGE LOCATION • DOWNSTAIRS WC • GARAGE WITH DRIVEWAY • NEW WINDOWS • REPLACED GUTTERS & FASCIAS • UPGRADED CONSUMER UNIT • CLOSE TO M3 JUNCTION 7 • STUNNING VIEWS

01256 321777

[www.thepropertyexplorer.co.uk](http://www.thepropertyexplorer.co.uk)

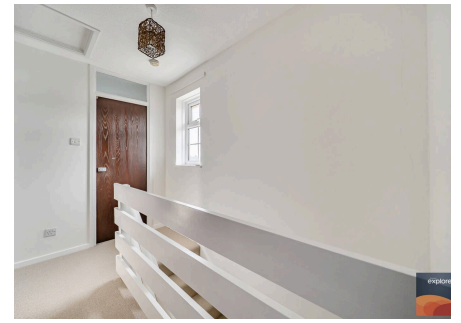
the property  
**explorer**

Step inside and the sense of space is immediate. The entrance hall sets a confident first impression, with useful storage and a conveniently positioned cloakroom. From here, the home opens into a generous living and dining room, a bright dual aspect space that comfortably accommodates both relaxed seating and a full family dining setup. Large windows draw in natural light, while the proportions make it ideal for everyday living as well as entertaining.

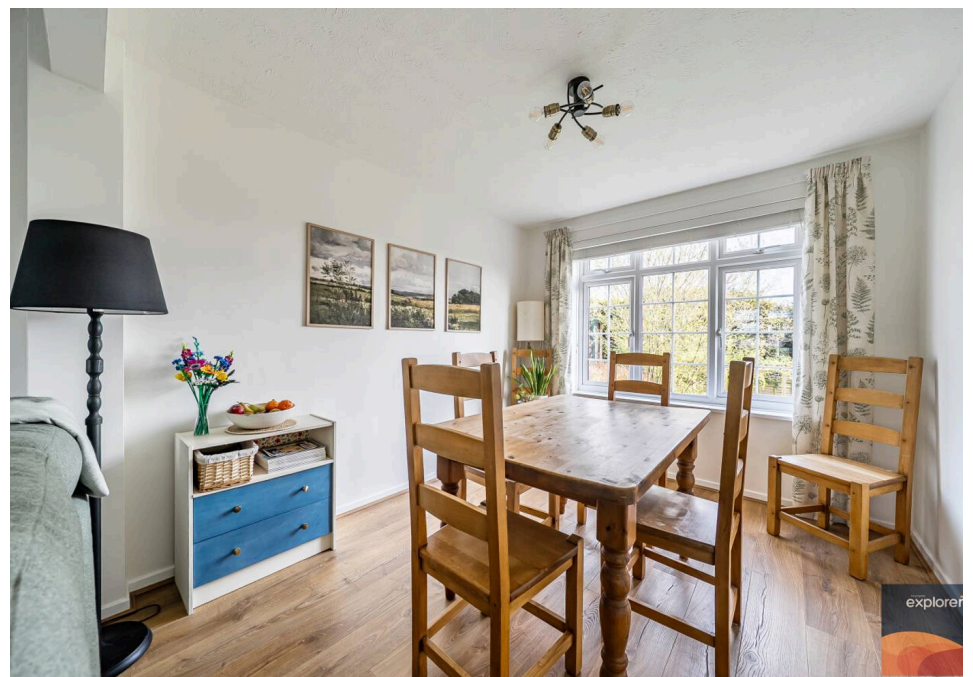
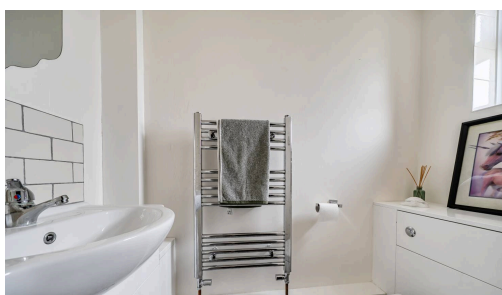
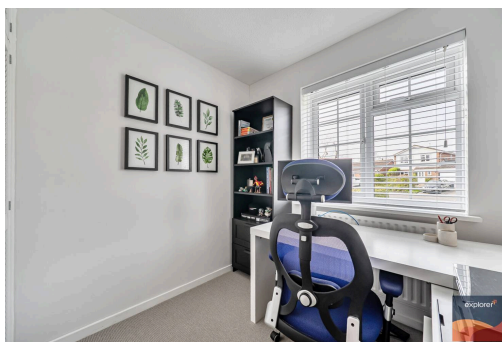
Council Tax band: E

Tenure: Freehold

EPC Energy Efficiency Rating: E



- 3 BEDROOMS
- VILLAGE LOCATION
- DOWNSTAIRS WC
- GARAGE WITH DRIVEWAY
- NEW WINDOWS
- REPLACED GUTTERS & FASCIAS
- UPGRADED CONSUMER UNIT
- CLOSE TO M3 JUNCTION 7
- STUNNING VIEWS





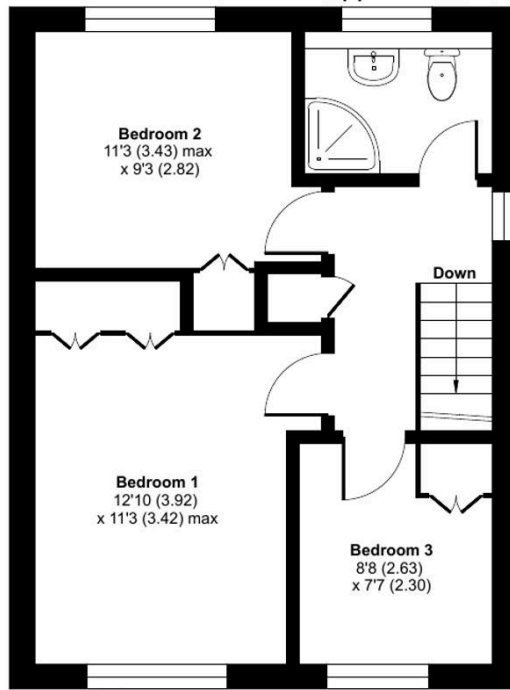
# Ramsholt Close, North Waltham, Basingstoke, RG25

Approximate Area = 897 sq ft / 83.3 sq m (excludes lean to)

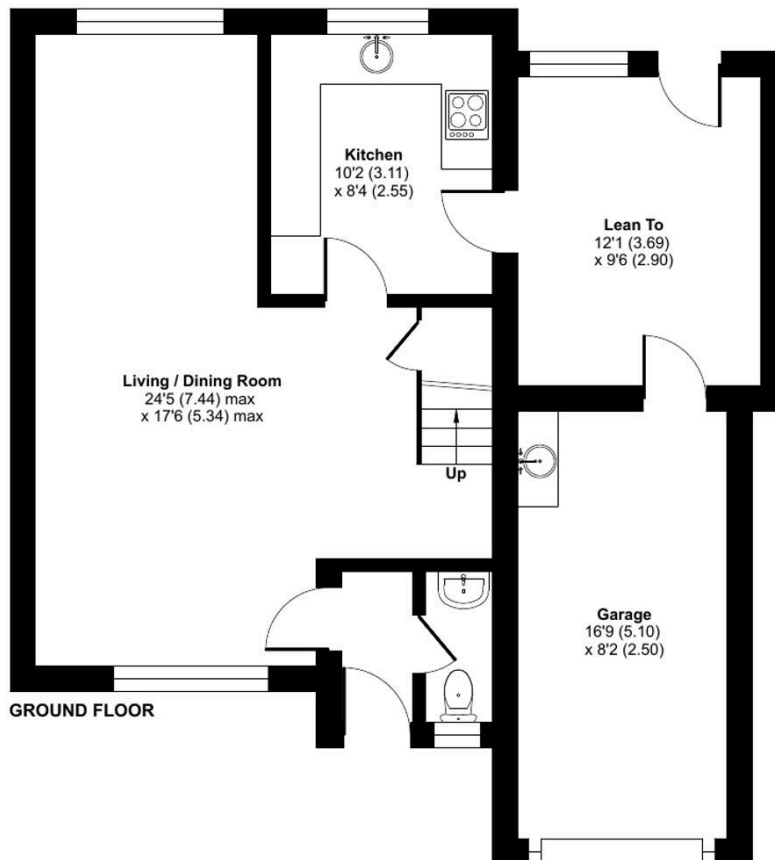
Garage = 137 sq ft / 12.7 sq m

Total = 1034 sq ft / 96 sq m

For identification only - Not to scale



FIRST FLOOR



GROUND FLOOR

