



Mayfayre, Jurys Gap
£359,995





Mayfayre

Jurys Gap, Rye

Immaculate two bed detached bungalow located directly opposite Broomhill Sands Beach. Open-plan living, stylish décor, large driveway, low-maintenance gardens, alfresco dining. CHAIN FREE.

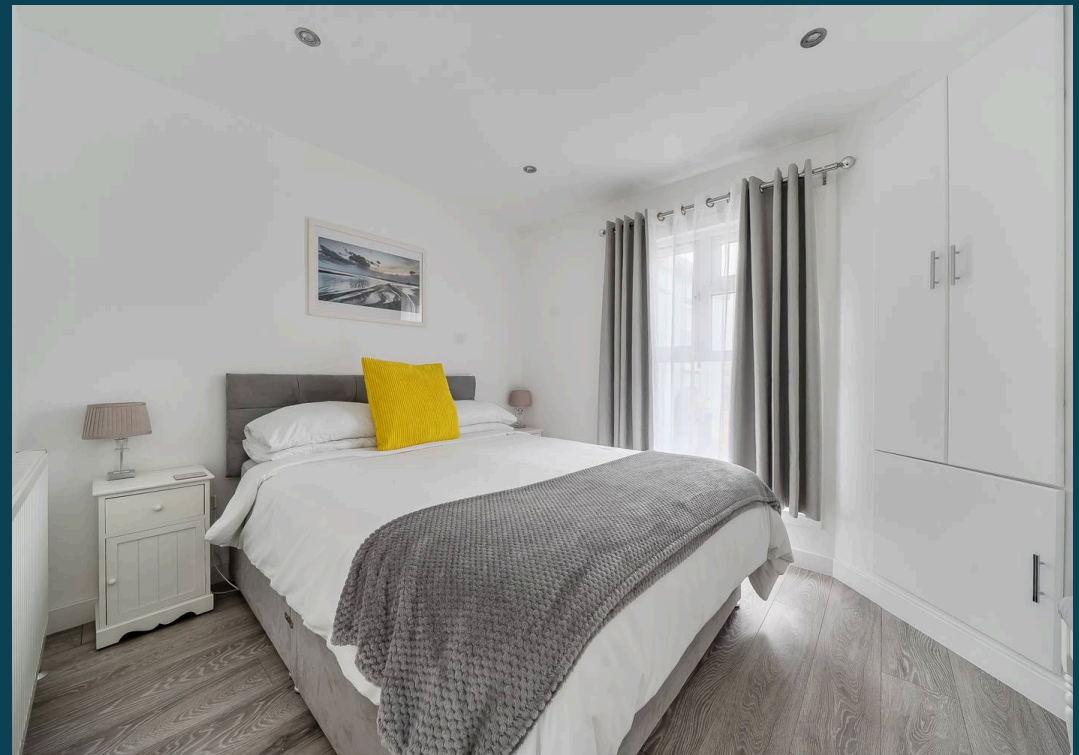
Council Tax band: A

Tenure: Freehold

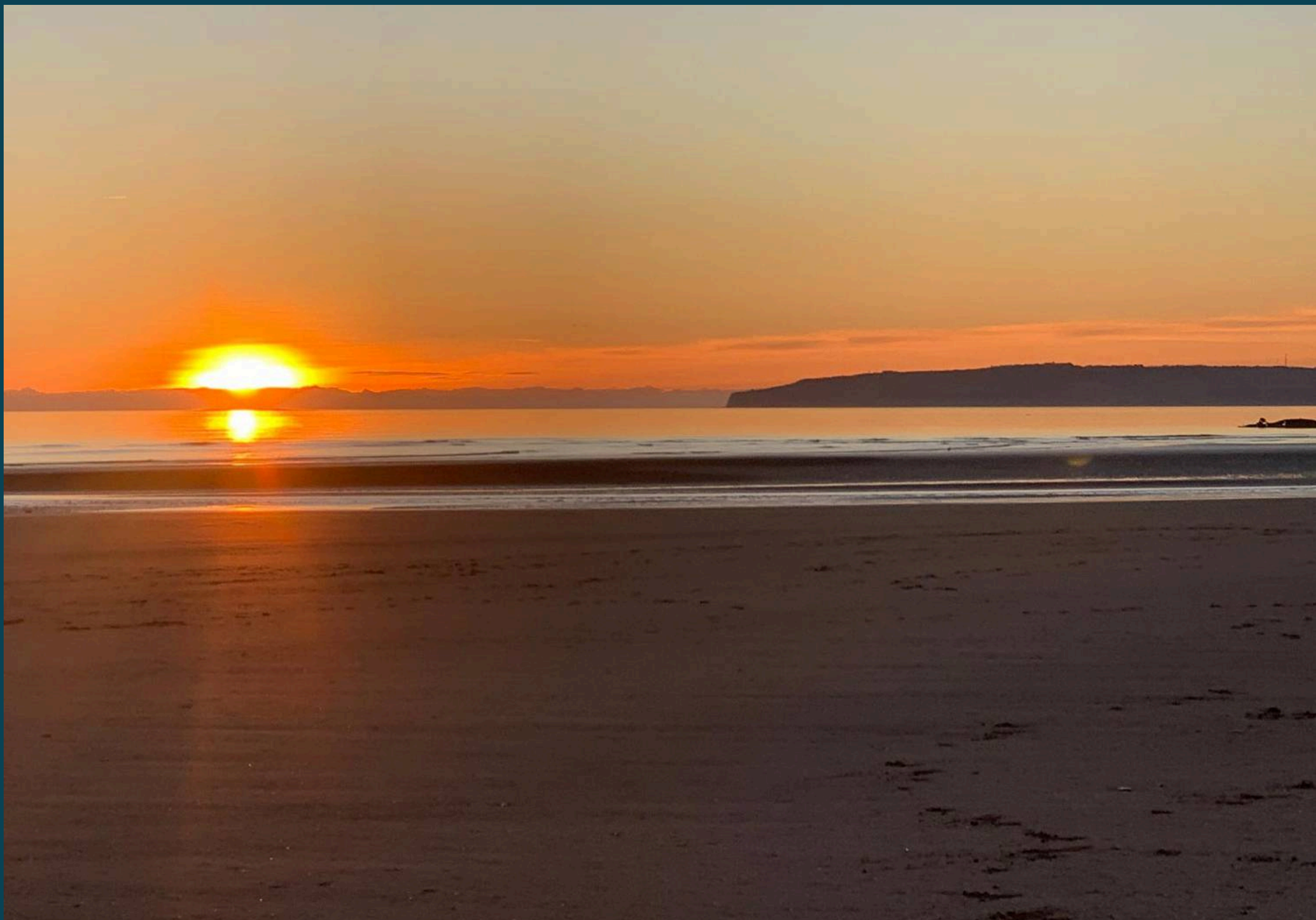
EPC Energy Efficiency Rating: F

EPC Environmental Impact Rating: E

- Located Directly Opposite Stunning Broomhill Sands Beach
- Chain Free
- Currently Operated as a Successful Holiday Let
- Equally Suitable as a Residential Property
- Mezzanine Loft Area with Glass Balustrade, Velux Window & Views
- Large Driveway
- Peaceful Rear Garden with Outdoor Seating Areas
- Immaculately Presented Throughout
- All Year Round Dog Friendly Beach Opposite





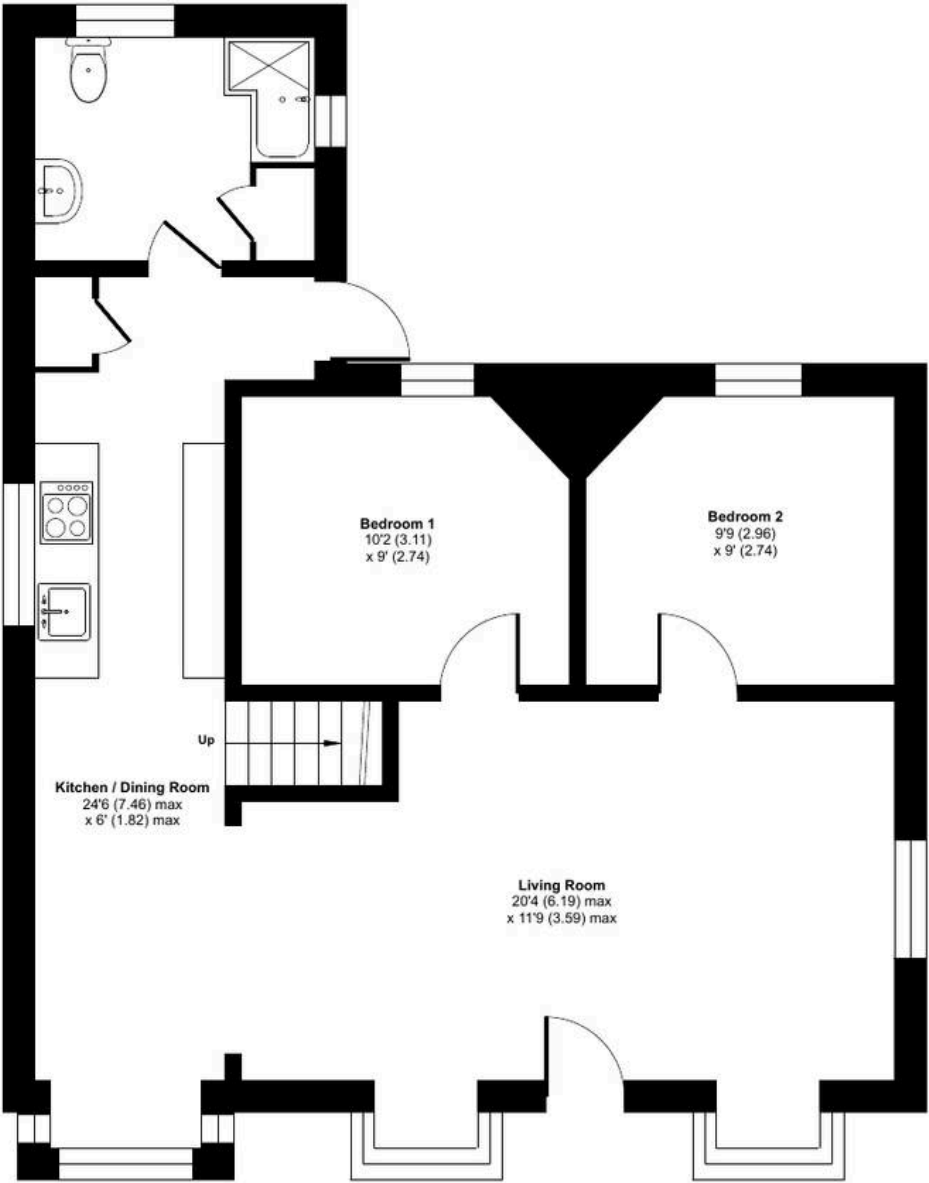




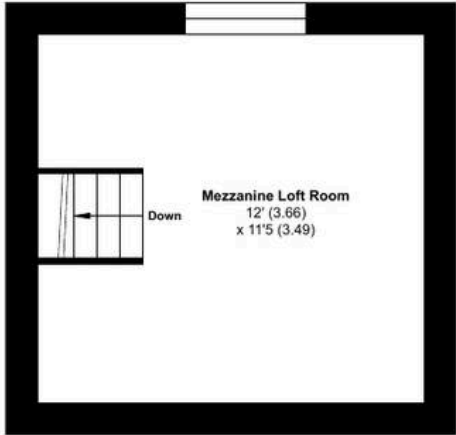
Mayfayre, Jurys Gap, Rye, TN31

Approximate Area = 812 sq ft / 75.4 sq m

For identification only - Not to scale



GROUND FLOOR



FIRST FLOOR



Nested Rye

01797 903045 • barnaby.osborne@nested.com • nested.com/barnaby-osborne

