

Aylsham Drive

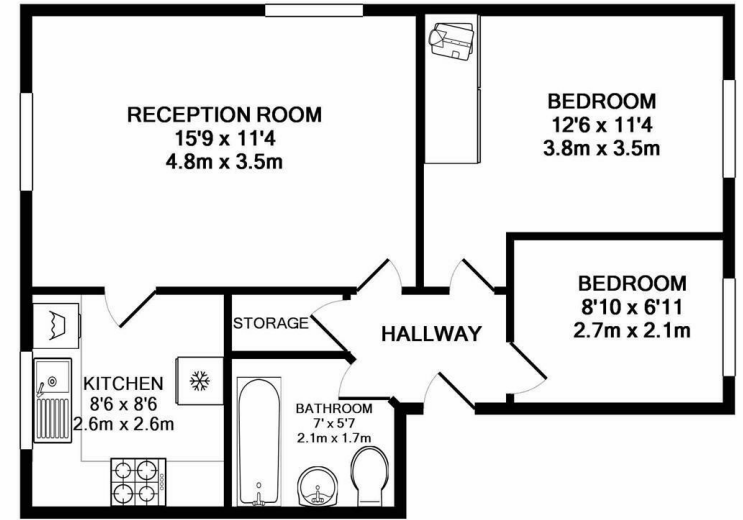
Ickenham • Middlesex • UB10 8UQ

PCM: £1,550 PCM



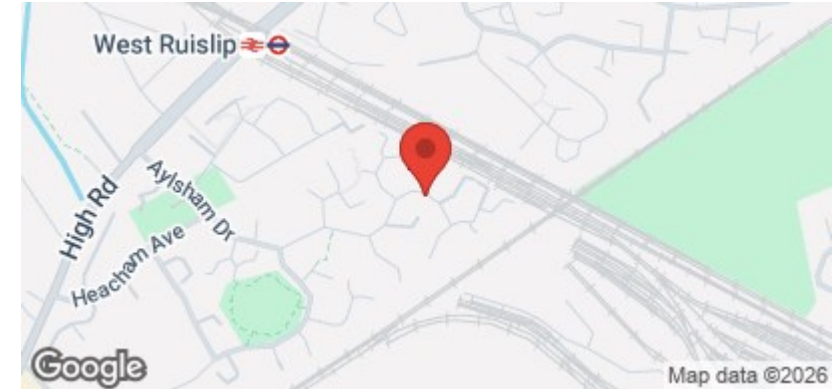
coopers
est 1986

A SPACIOUS two bedroom, TOP FLOOR and NATURALLY LIGHT apartment set in the ever POPULAR Brackenbury Village development in Ickenham positioned only a SHORT WALK to West Ruislip (Central & Chiltern Lines) and Ickenham (Metropolitan & Piccadilly Lines) Tube Stations. The property briefly comprises; entrance hallway, a double bedroom with built in wardrobes, a good sized single bedroom, family bathroom, large lounge and modern tiled kitchen with white goods. The property also benefits from gas central heating, double glazing and residents parking.



TOTAL APPROX. FLOOR AREA 519 SQ.FT. (48.2 SQ.M.)

Whilst every attempt has been made to ensure the accuracy of the floor plan contained here, measurements of doors, windows, rooms and any other items are approximate and no responsibility is taken for any error, omission, or mis-statement. This plan is for illustrative purposes only and should be used as such by any prospective purchaser. The services, systems and appliances shown have not been tested and no guarantee as to their operability or efficiency can be given
Made with Metropix ©2017



Top floor

Spacious lounge

Close to West Ruislip Tube Station

Close to Ickenham Tube Station

Gas central heating

Double glazing

Quiet residential road

Boarded loft space

Two bedrooms

Unfurnished

Available Date

10th July 2026

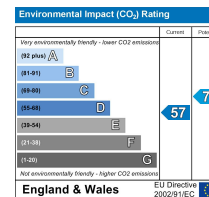
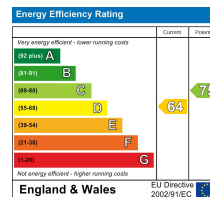
01895 625 625

126-128 High Street, Ruislip,

Middlesex, HA4 8LL

rl@coopersresidential.co.uk

CoopersResidential.co.uk



Important Notice: These particulars, whilst believed to be accurate are set out as a general outline only for guidance and do not constitute any part of an offer or contract. Intending purchasers should not rely on them as statements or representation of fact, but must satisfy themselves by inspection or otherwise has the authority to make or give any representation or warranty in respect of the property.

coopers
est 1986