



Cornel House
Longlands Road
Sidcup
DA15 7LX

Leasehold

Offered for sale is this recently refurbished one-bedroom apartment, finished to a high standard throughout. The property boasts a brand new bathroom, a modern fitted kitchen, new heaters, and brand new consumer unit.

Ideally located in a prime position, the apartment is just a short walk from Sidcup train station, as well as a range of shops, restaurants, and cafés. It would make an excellent first-time purchase.

The accommodation briefly comprises an entrance hall, a spacious lounge, a contemporary kitchen, a brand new bathroom, and double bedroom.

Externally, the property benefits from allocated underground parking and a private storage lock-up, ideal for bikes or additional storage.

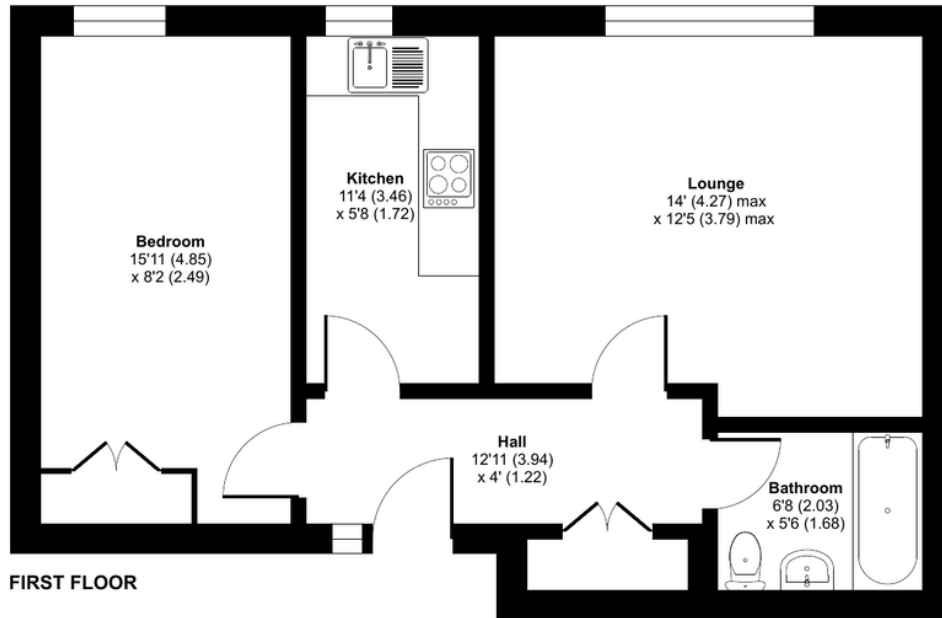
Local Authority Bexley London Borough
Council
Council Tax Band B
EPC Rating D

Lease 954 years remaining
Service Charge £2,200 per annum
Ground Rent none

Longlands Road, Sidcup, DA15

Approximate Area = 486 sq ft / 45.1 sq m (excludes storage)

For identification only - Not to scale



Drewery Property Consultants
128 Station Road
Sidcup
Kent
DA15 7AF

Contact
020 8269 6605
info@drewery.co.uk
www.drewery.co.uk

Agents Note: Whilst every care has been taken to prepare these particulars, they are for guidance purposes only. All measurements are approximate and are for general guidance purposes only and whilst every care has been taken to ensure their accuracy, they should not be relied upon and potential buyers/tenants are advised to recheck the measurements.