



## Vyner Road, W3

£1,150,000

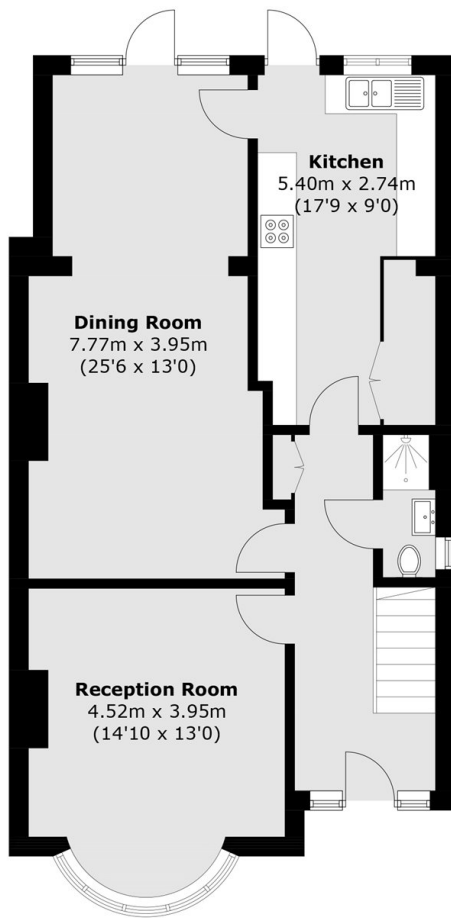
A spacious semi-detached five bedroom family home on a quiet residential road within the sought after Goldsmith's Estate. The property has off street parking for multiple cars and a large garden with a separate annex/studio at the rear. The property offers any future buyer an opportunity to extend further or already utilise the generous space making it the perfect family home.

### Features

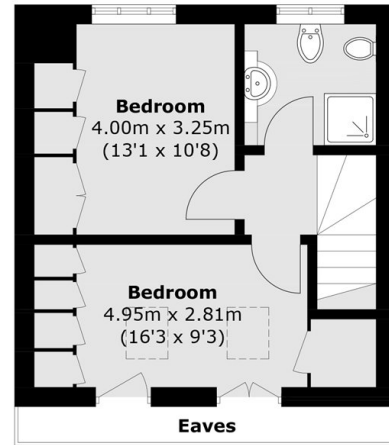
Five Bedrooms  
Three Bathrooms  
Off-Street Parking  
Annex/Studio  
Semi-Detached  
Large Garden

Vyner Road is half a mile from Acton Central (Overground), Acton Main Line (Elizabeth Line), and the amenities of Churchfield Road.

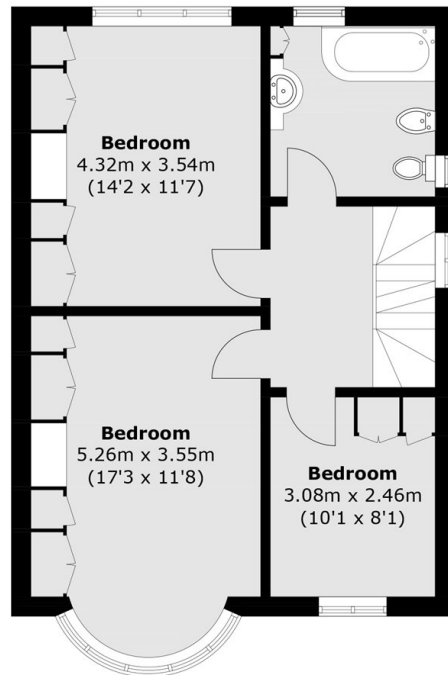
Vyner Road,  
London, W3



**Ground Floor**



**Second Floor**



**First Floor**

Total area (approx.): 159.2 sq. m (1,713.6 sq. ft)  
(Excluding Eaves)