



Leinster Square, W2

£4,500 Per week

Dexters



Leinster Square, W2

This impeccably refurbished two-bedroom third floor flat overlooks a private residents' garden square. Behind the grand stucco frontage with tall, west-facing arched windows, this meticulously restored building is in brand new condition. Arranged over one floor, it features two bedrooms, two bathrooms and open plan kitchen / reception room, offering luxurious living with elegant charm.

The building was recently completed to a high specification to include comfort cooling, open plan designer kitchens with integrated appliances, oak parquet flooring to living areas and carpets to bedrooms.

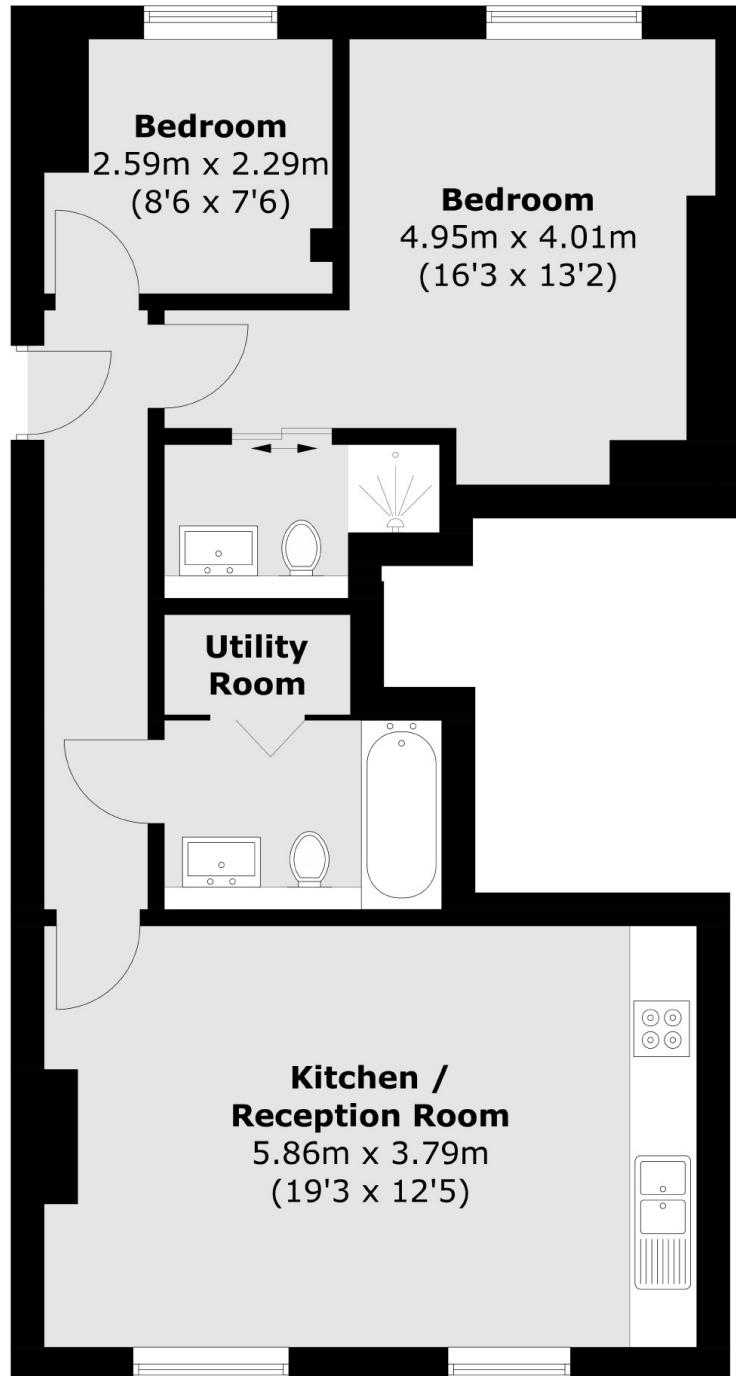
Westbourne Grove is a prestigious area in Notting Hill, known for its luxury boutiques, fine dining, and elegant cafes. It offers excellent transport links, with nearby tube stations providing easy access to central London. Close to Kensington Gardens, it combines sophisticated urban living with natural beauty.

Features

- Meticulous Restoration
- Two Bedroom Apartment
- Brand New
- Two Bathrooms
- Third Floor
- Underground Heating



Leinster Square,
London, W2



Total area (approx.): 59.3 sq. m (638.3 sq. ft)