



## Niton Street, SW6

£1,100,000

A wonderfully bright and perfectly arranged three bedroom, two bathroom, split-level Victorian conversion flat with a private south facing garden. The property spans over 1,300 sq ft and is being sold with a share of the freehold and has no onward chain.

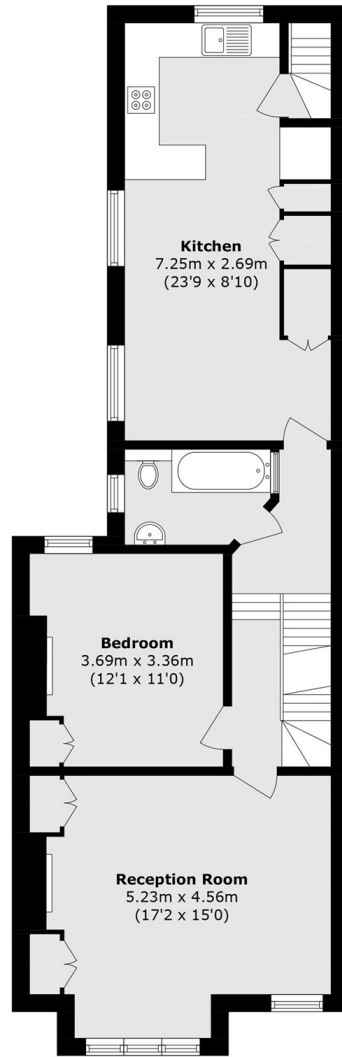
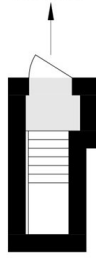
Niton Street is a quiet residential road located in the popular Alphabet Streets which runs perpendicular off Fulham Palace Road. There is easy access to Bishops Park, as well as the Thames Path, which runs along the River Thames.

### Features

- Three Bedrooms
- Two Bathrooms
- Share of Freehold
- Private South Facing Garden
- Split-Level
- The Alphabets

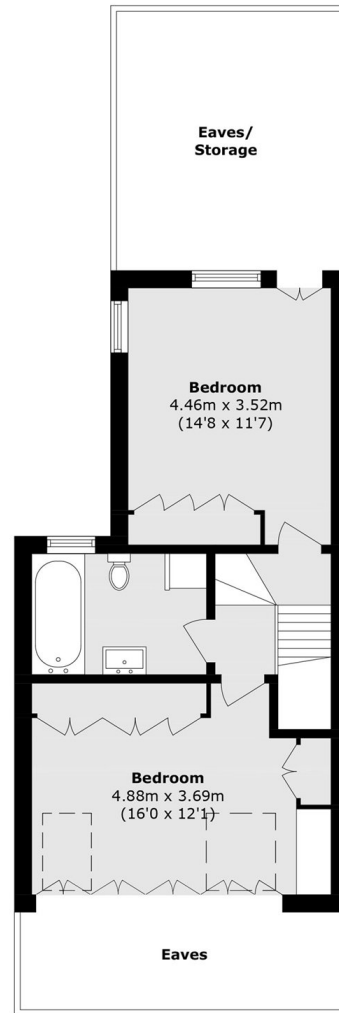
# Niton Street, London, SW6

To Garden



Ground Floor

First Floor



Second Floor

Total area (approx): 123.9 sq. m (1333.6 sq. ft)  
(Excluding Eaves)