



OAKFIELD



Eversfield Place, St. Leonards, TN37 6DD

£850 Per Calendar Month



## Eversfield Place, St. Leonards, TN37 6DD

This one bedroom flat is situated on St. Leonards' seafront, with a vast array of coffee shops, restaurants, boutique shops and other amenities just around the corner! Warrior Square Station and Hastings town centre are within easy reach.

The accommodation comprises of a bright living room with archway to modern kitchen (equipped with electric oven and hob, washing machine and fridge / freezer). The double bedroom overlooks the front balcony entrance and has ample fitted storage and newly fitted carpet. The bathroom benefits from both bath and electric shower over.

Being located on the top floor, the flat offers a quiet space with no accommodation above.

Additional benefits include modern high heat retention electric heating, new wall insulation and double glazing.

Water charges are included within the monthly rent.

Annual household income threshold £25,500

Available for a long term tenancy  
Available early August 2026





### Living Room

18'11" max x 10'7" m max (5.77m max x 3.24 m max)

### Kitchen

7'6" x 7'1" (2.3m x 2.17m )

### Bedroom

10'7" x 10'6" (3.24m x 3.21m)

### Bathroom

7'6" x 4'11" (2.3m x 1.5m)

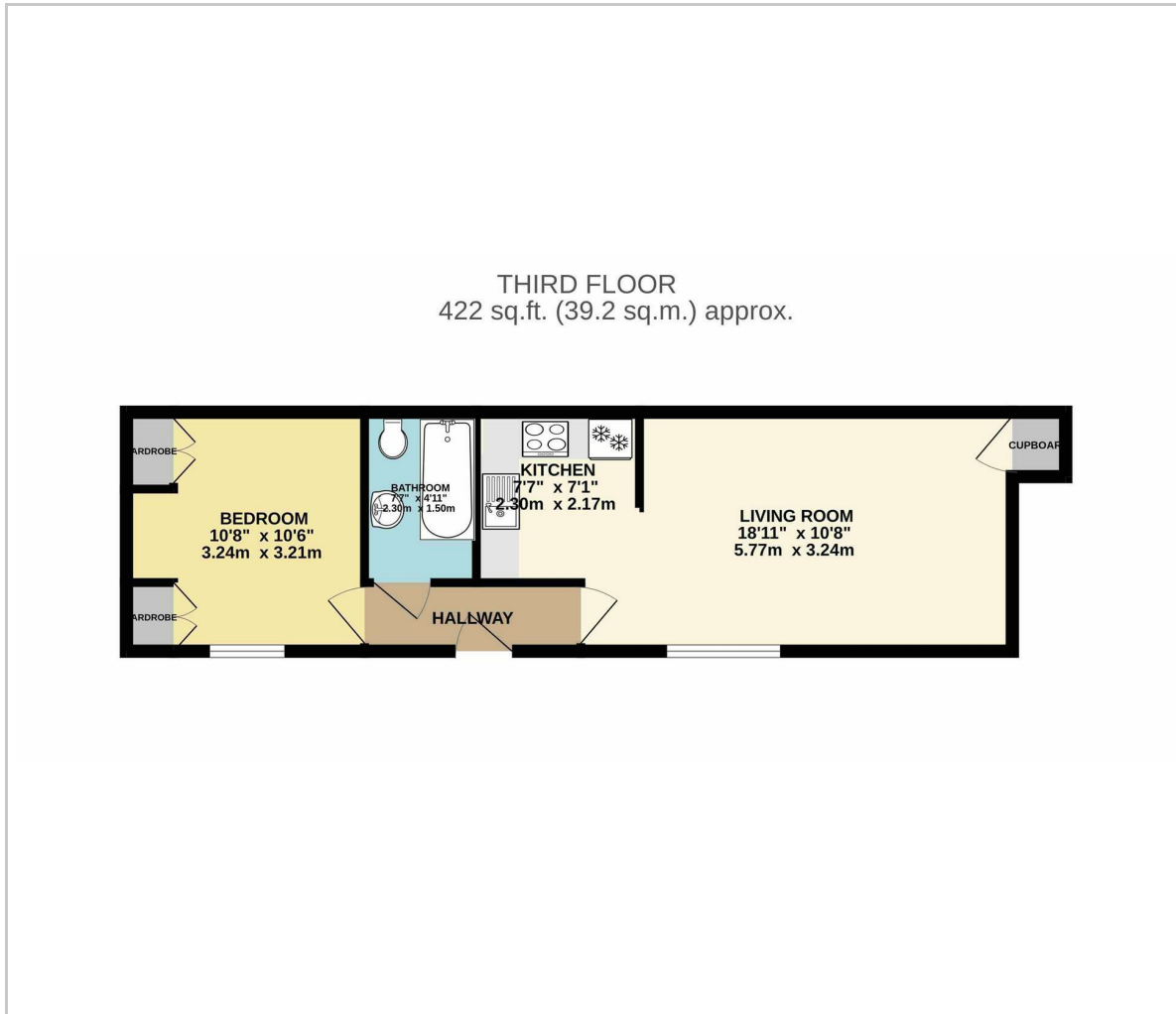
### Appliances

Supplied by the Landlord: Electric oven and hob, freestanding fridge / freezer, washing machine

**Council Tax Band A - £1,784.39 Per Annum**



## Floor Plan

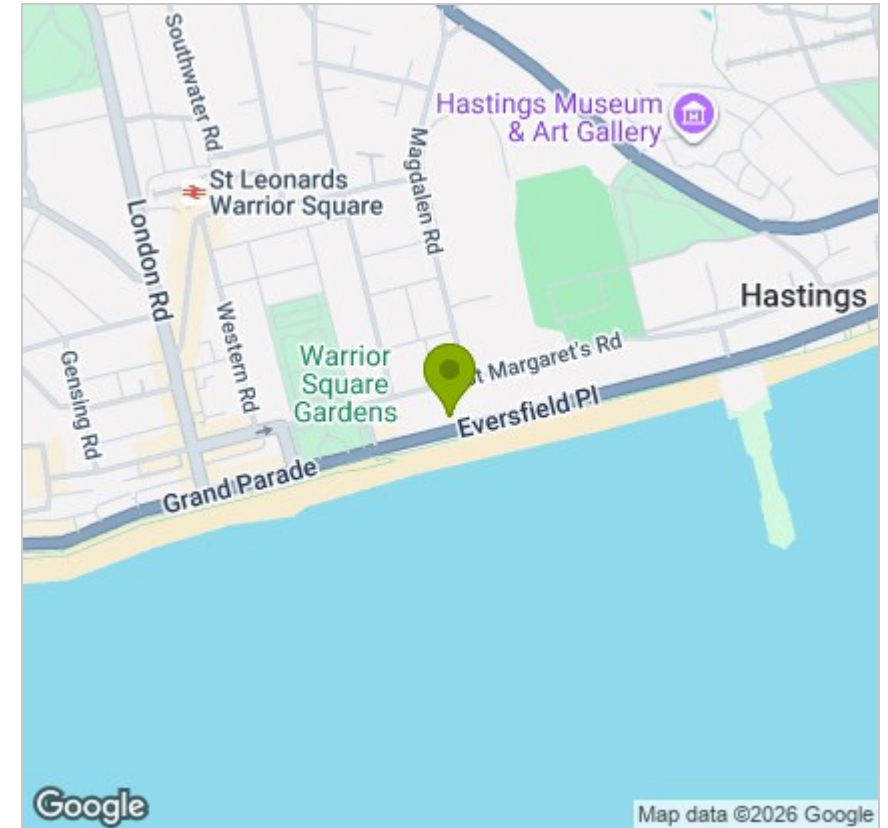


## Viewing

Please contact us on 01424 446644 if you wish to arrange a viewing appointment for this property or require further information.

These particulars, whilst believed to be accurate are set out as a general outline only for guidance and do not constitute any part of an offer or contract. Intending purchasers should not rely on them as statements of representation of fact, but must satisfy themselves by inspection or otherwise as to their accuracy. No person in this firm's employment has the authority to make or give any representation or warranty in respect of the property.

## Area Map



## Energy Efficiency Graph

