



Sherringham Road

Southport, PR8 2HQ

£15,000

**** AVAILABLE FOR THE ROYAL BIRKDALE OPEN 2026 ****

Located in one of Birkdale's most desirable and prestigious locations, this truly magnificent home seamlessly combines space, style, and modern convenience in a tranquil and sought-after setting.

Situated close to Waterloo Road near Birkdale village, the property is just an easy 1 mile from the Royal Birkdale Golf Club and only a stone's throw from several other prestigious courses, including Hillside Golf Club and Southport Golf Links.

Set in one of Birkdale's most desirable locations, this exceptional home combines generous living space, modern style, and everyday convenience.

The ground floor features a welcoming porch and bright hallway, leading to a sleek kitchen with high-end appliances and marble worktops. At the heart of the home is an open-plan lounge and dining area with a bay window overlooking the front garden, while a rear sunroom with a skylight provides a light-filled space with access to the landscaped garden. There are also two double bedrooms on this level, both with ensuite shower rooms—one with a walk-in wardrobe and the other with fitted storage—along with a utility room and downstairs WC.

Upstairs offers a further spacious double bedroom with dual-aspect views, a walk-in wardrobe, and a stylish family

**** AVAILABLE FOR THE ROYAL BIRKDALE OPEN 2026 ****

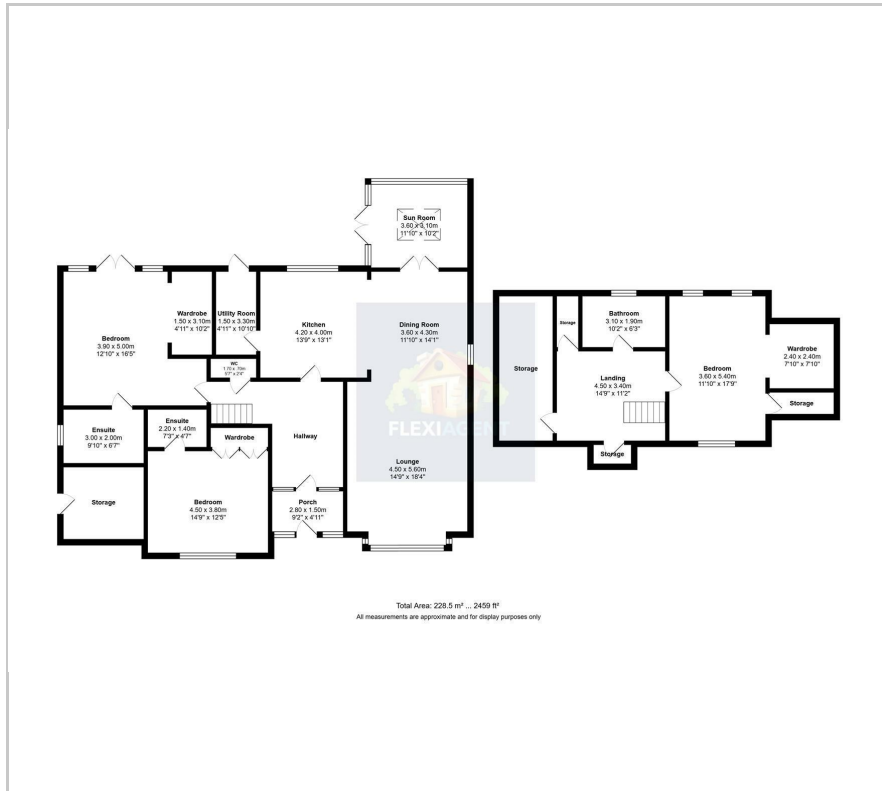
- 0.7 miles from the Royal Birkdale Golf Club
- Sought-after location
- PRICE ON APPLICATION
- Spanning over 2500 sqft
- Master suite with a large shower room and walk-in wardrobes
- Two additional spacious double bedrooms with en-suites
- Separate WC
- Ample parking to the front of the property
- Expansive rear garden with summer house - great for entertaining

Viewing

Please contact our Flexi-Agent Southport Lettings Office on 01704 889455 if you wish to arrange a viewing appointment for this property or require further information.



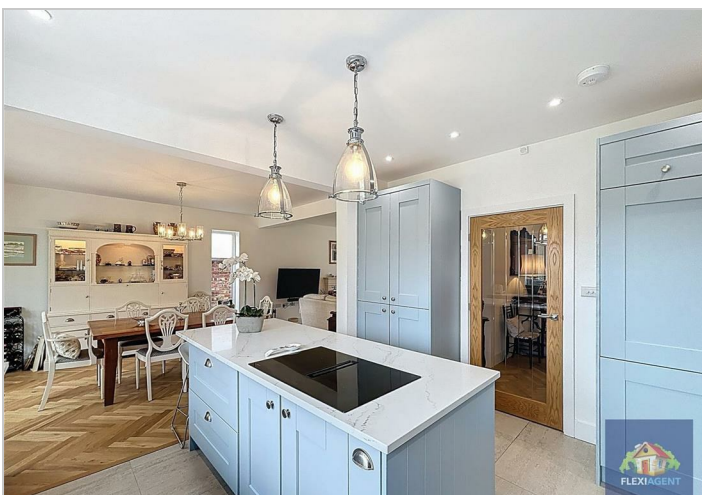
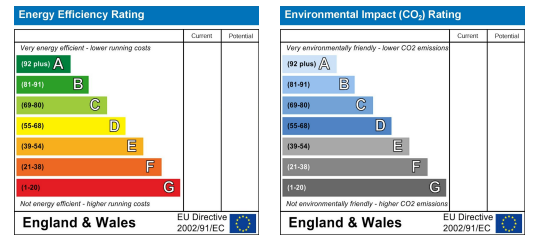
Floor Plan



Area Map



Energy Efficiency Graph



These particulars, whilst believed to be accurate are set out as a general outline only for guidance and do not constitute any part of an offer or contract. Intending purchasers should not rely on them as statements of representation of fact, but must satisfy themselves by inspection or otherwise as to their accuracy. No person in this firm's employment has the authority to make or give any representation or warranty in respect of the property.