

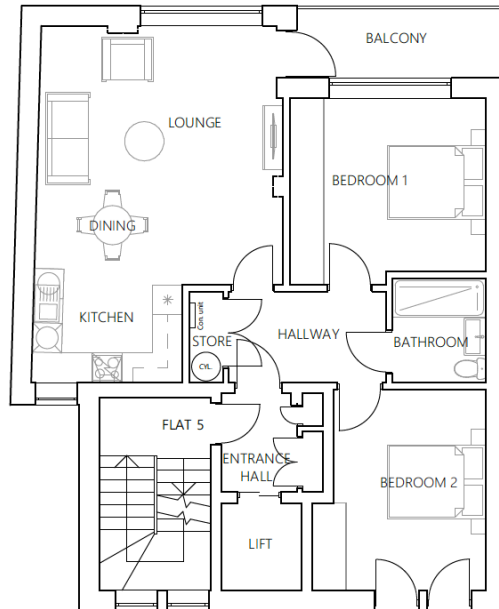
## Cynthia Ikeda Apartments, London, SE26 5HF

Guide Price £475,000

🛏️ 2 🚿 1 🚗 1



- Open Day Friday 12 June By Appointment Only Guide Price £475,000-£525,000  
– Quote Ref HM1127
- Show Flat Ready To View
- Share Of Freehold
- 2,200 Square Feet Of Elegantly Designed Communal Areas
- Lift Access & Step-Free Entry
- Two-Bedroom Apartment
- Private Balcony
- Triple-Glazed Windows. Energy-Efficient Heating And Ventilation Systems
- Chain Free Purchase



Flat 5 Layout Plan  
Scale 1:100

**SHOW FLAT READY TO VIEW!**  
 Luxury Living in a Landmark New Development  
 Open Day Friday 12 June – By Appointment Only  
 Exclusive Listing | Quote Ref: HM1127  
 Guide Price: £475,000–£525,000 | Chain Free

Welcome to Cynthia Ikeda Apartments – an exciting new collection of beautifully crafted homes designed for modern London living. Combining elegant architecture, refined interiors, and exceptional convenience, this stunning apartment offers a rare opportunity to own a stylish home in one of South East London’s most connected and vibrant neighbourhoods.