

THE HOME AGENCY

'Passion for property.'



33 Clauden Close, Swaythling, Southampton, Hampshire, SO18

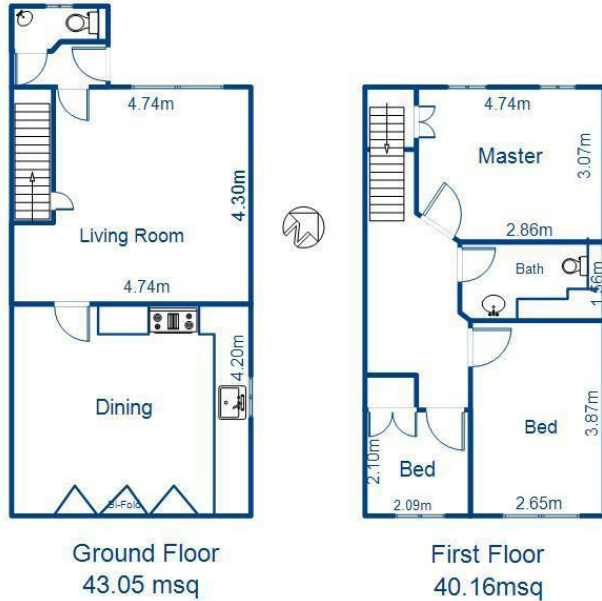
£1,550 PCM

- Three Bed Semi Detached Family Home
- Gas Central Heating
- Downstairs WC
- Pets Considered
- Stunning Kitchen/Diner
- Garden
- Two Double Bedrooms
- Double Glazing
- Double Driveway
- Modern Bathroom

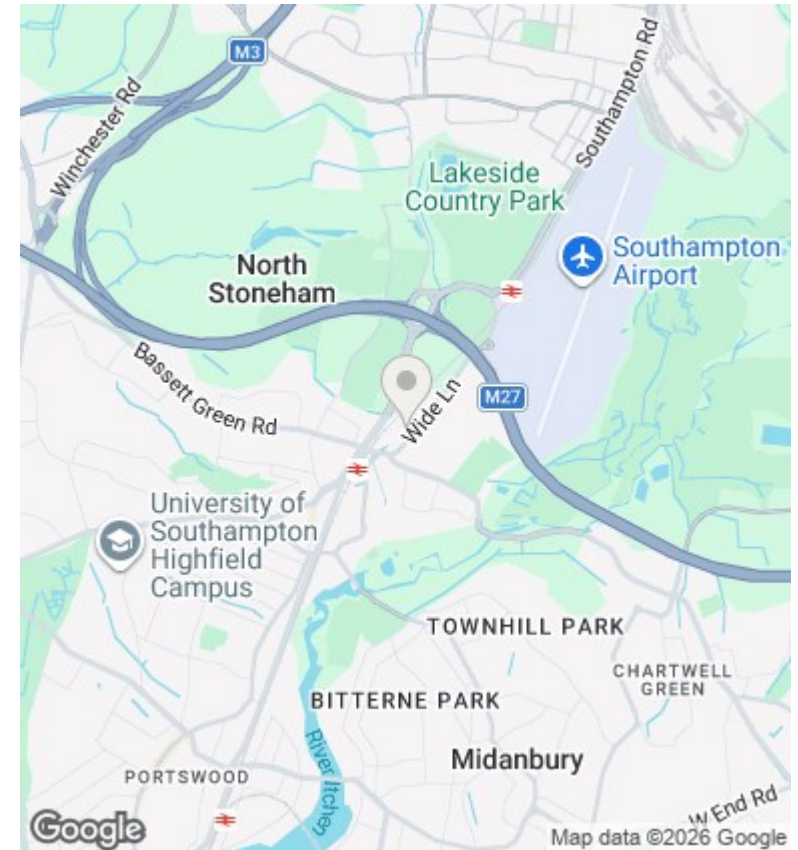
11 London Road, Southampton, Hampshire, SO15 2AE
02380 632632

enquiries@thehomeagency.net
<https://thehomeagency.net>

33 Clauden Close Swaythling SO18 2HQ



ALL MEASUREMENTS ARE APPROXIMATE



Directions

Viewings

Viewings by arrangement only. Call 02380 632632 to make an appointment.

Council Tax Band

B

EPC Rating:

C

Energy Efficiency Rating		Current	Potential
Very energy efficient - lower running costs			
(92 plus) A			90
(81-91) B		79	
(69-80) C			
(55-68) D			
(39-54) E			
(21-38) F			
(1-20) G			
Not energy efficient - higher running costs			
England & Wales		EU Directive 2002/91/EC	