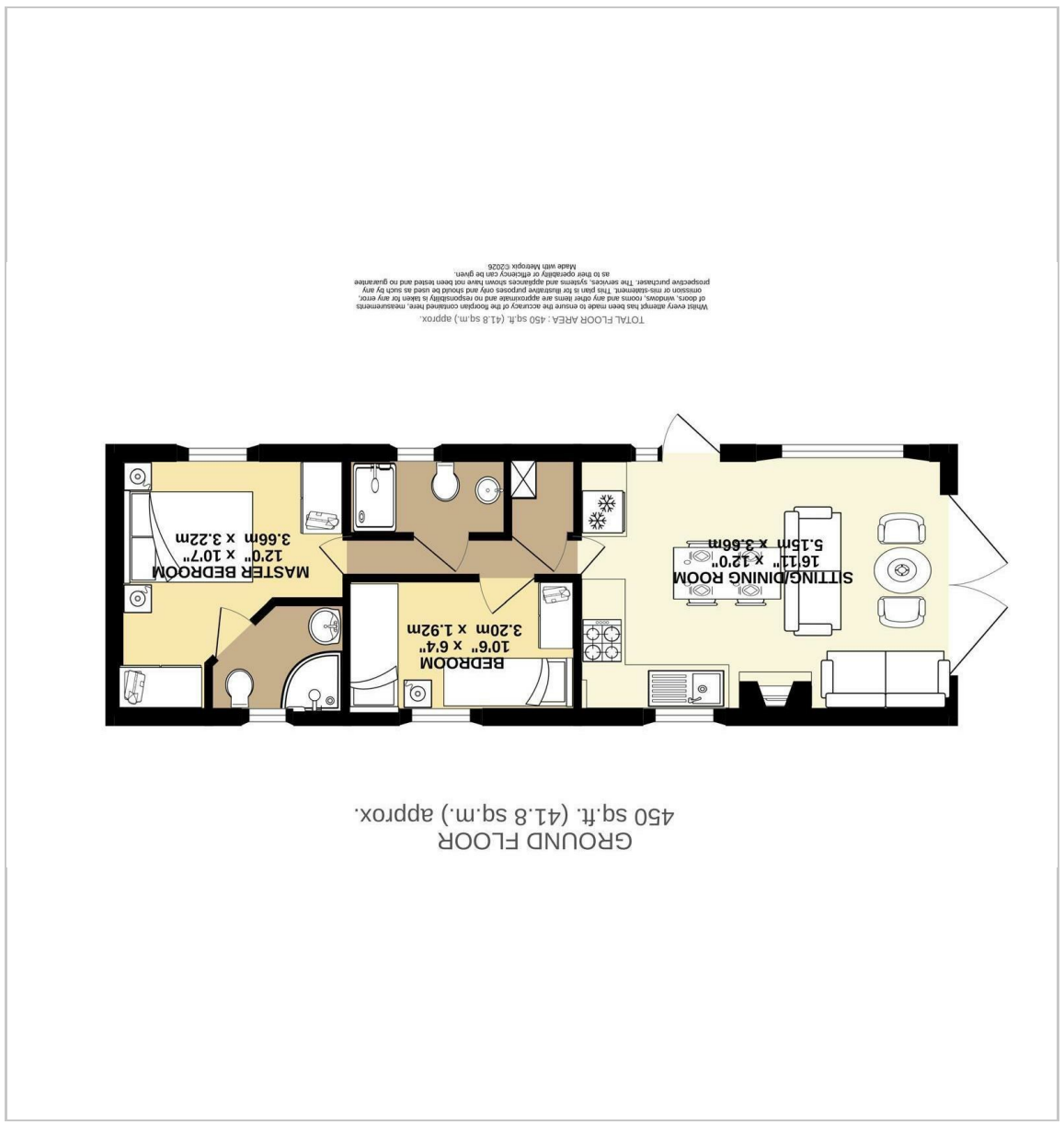


ARW Lodge Chequers Road
 Minster On Sea, Sheerness, ME12 3SJ
 Price £75,000

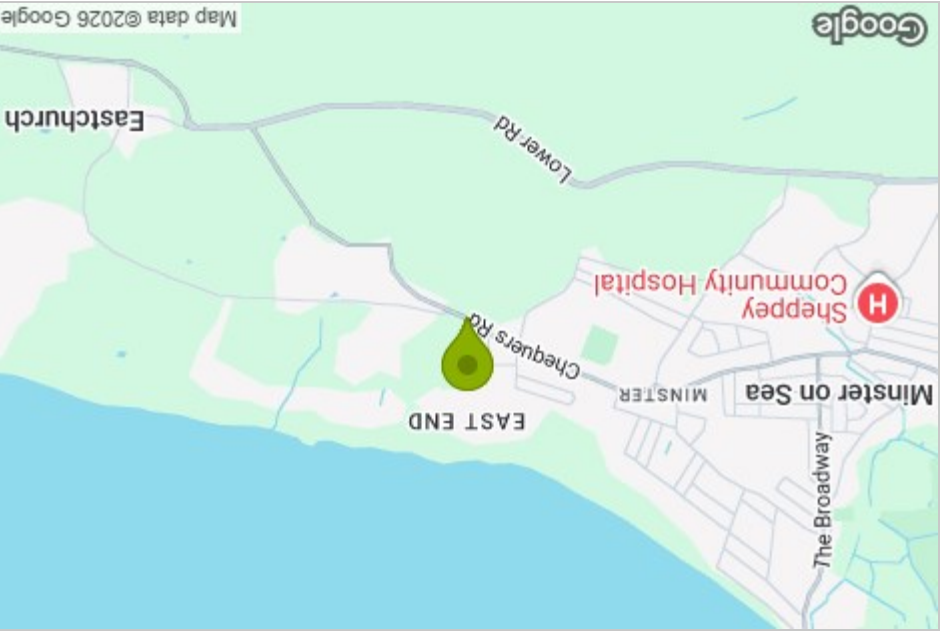
2 2 1



Floor Plan



Area Map



Energy Efficiency Graph

Energy Efficiency Rating	
Very energy efficient - lower running costs	A
Energy efficient - lower running costs	B
Decent energy efficiency - lower running costs	C
Below average energy efficiency - higher running costs	D
Poor energy efficiency - higher running costs	E
Very poor energy efficiency - higher running costs	F
Extremely poor energy efficiency - higher running costs	G

Environmental Impact (CO ₂) Rating	
Very environmentally friendly - lower CO ₂ emissions	A
Environmentally friendly	B
Decent environmental friendliness	C
Below average environmental friendliness	D
Poor environmental friendliness	E
Very poor environmental friendliness	F
Extremely poor environmental friendliness	G

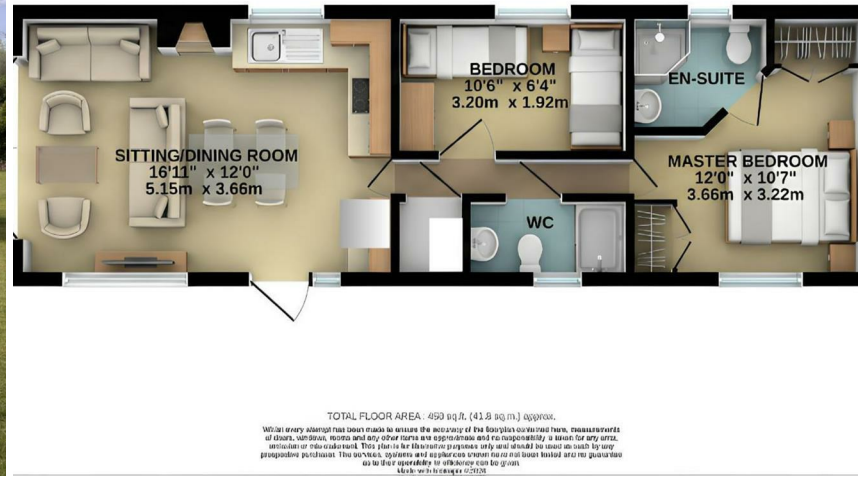
Viewing
 Please contact our Isle of Sheppey Office on 01795 666 666 if you wish to arrange a viewing appointment for this property or require further information.

These particulars, whilst believed to be accurate are set out as a general outline only for guidance and do not constitute any part of an offer or contract. Intending purchasers should not rely on them as statements of representation or fact, but must satisfy themselves by inspection or otherwise as to their accuracy. No person in this firm's employment has the authority to make or give any representation or warranty in respect of the property.

ARW Lodge Chequers Road



GROUND FLOOR
450 sq.ft. (41.8 sq.m.) approx.



- Beautifully refurbished off site to a high standard
- En-suite to principal bedroom
- Panoramic windows and doors
- Full size integrated appliances included
- Stylish modern finish throughout
- Two generous-sized bedrooms
- Spacious open-plan living area
- Bi-folding doors for indoor-outdoor flow
- Fully double-glazed throughout
- Optional wrap-around decking for the perfect finishing touch

Description

£75,000 FIXED PRICE

A fully refurbished turnkey static caravan off site finished to a high standard, this attractive home offers stylish and comfortable accommodation with a clean, modern feel throughout. Designed as a true home-from-home, it combines quality, practicality, and contemporary style in one beautifully presented package.

Inside, the bright and well-presented interior creates a warm and welcoming atmosphere from the moment you step in. The thoughtfully designed open-plan living area makes excellent use of the available space, while still maintaining an elegant, comfortable, and highly practical residential feel. Panoramic windows bring the outside into the home, filling the space with natural light and enhancing the overall sense of openness. The home also offers two generous-sized bedrooms, including an en-suite to the principal bedroom.

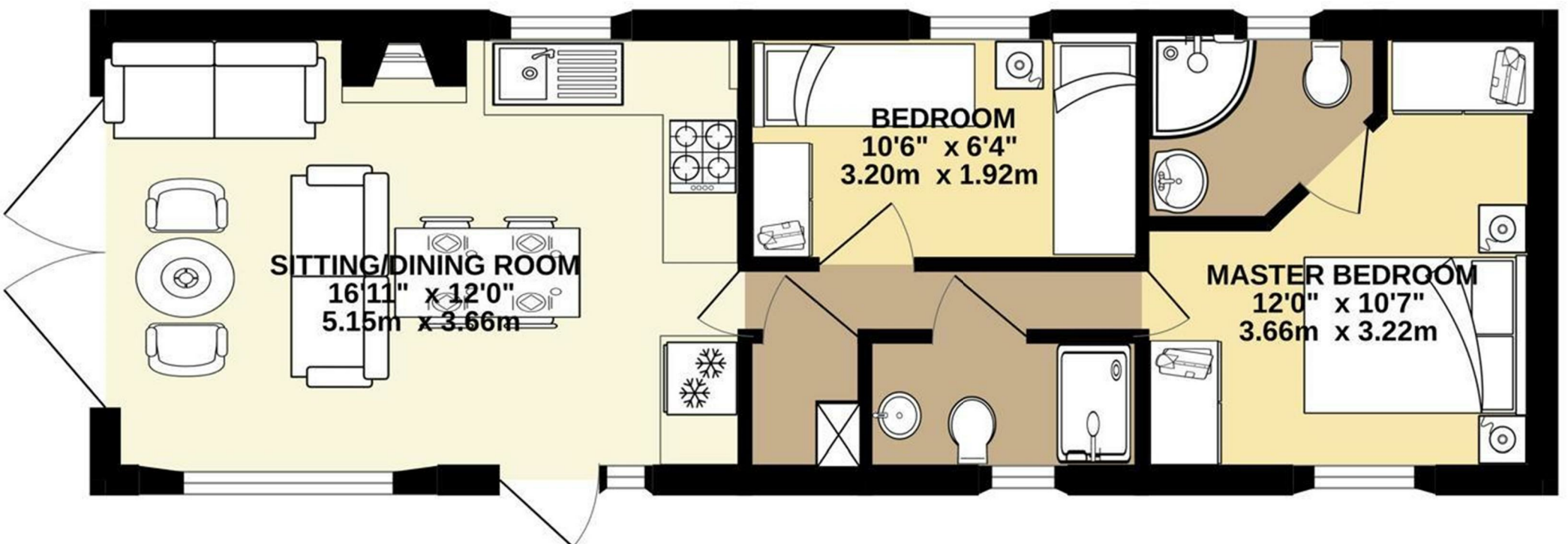
This impressive caravan comes complete with all modern features, including integrated appliances for added convenience and ease of living. A dishwasher, washing machine/tumble dryer, cooker, and fridge/freezer are all included, making the property fully equipped and ready for immediate use.

With its tasteful styling, quality fittings, and smart overall presentation, this is a superb opportunity for buyers seeking a fully refurbished static caravan with nothing further to do. Beautiful optional decking can also be added, providing that final finishing touch and creating the perfect space for relaxation.

The price is for the fully refurbished turnkey static caravan only. Any additional works or services are at extra cost and details available. Delivery available in the UK. The AI-generated images are for illustration purposes only.

Minster On Sea, Sheerness, ME12 3SJ

GROUND FLOOR
450 sq.ft. (41.8 sq.m.) approx.



TOTAL FLOOR AREA : 450 sq.ft. (41.8 sq.m.) approx.

Whilst every attempt has been made to ensure the accuracy of the floorplan contained here, measurements of doors, windows, rooms and any other items are approximate and no responsibility is taken for any error, omission or mis-statement. This plan is for illustrative purposes only and should be used as such by any prospective purchaser. The services, systems and appliances shown have not been tested and no guarantee as to their operability or efficiency can be given.
Made with Metropix ©2026