

OVER 60?

Secure this property
for up to **59% less!**



Guide Price

£575,000

Freehold

4x  2x  2x 

Dymchurch Road, St. Mary's Bay, Romney

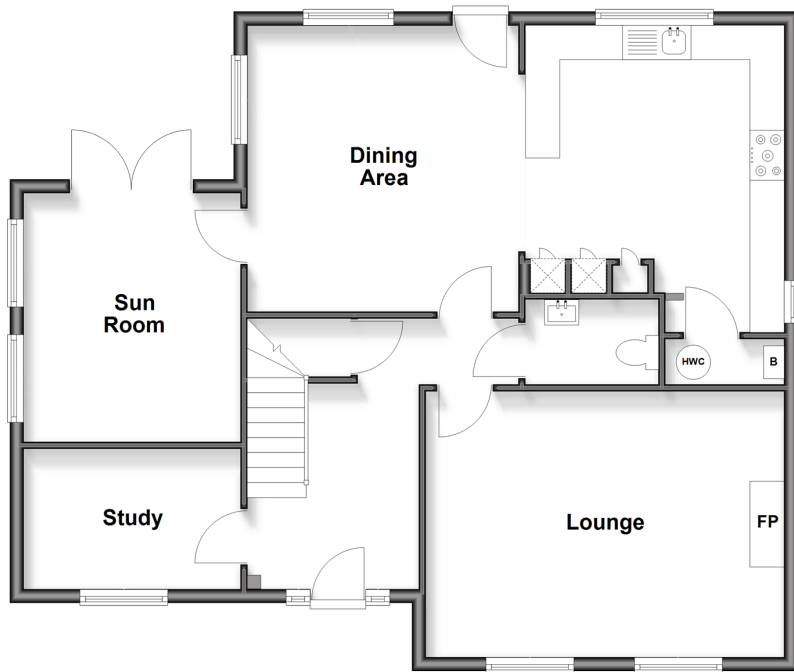
Marsh, Kent, TN29

Wards

Helping you move forwards

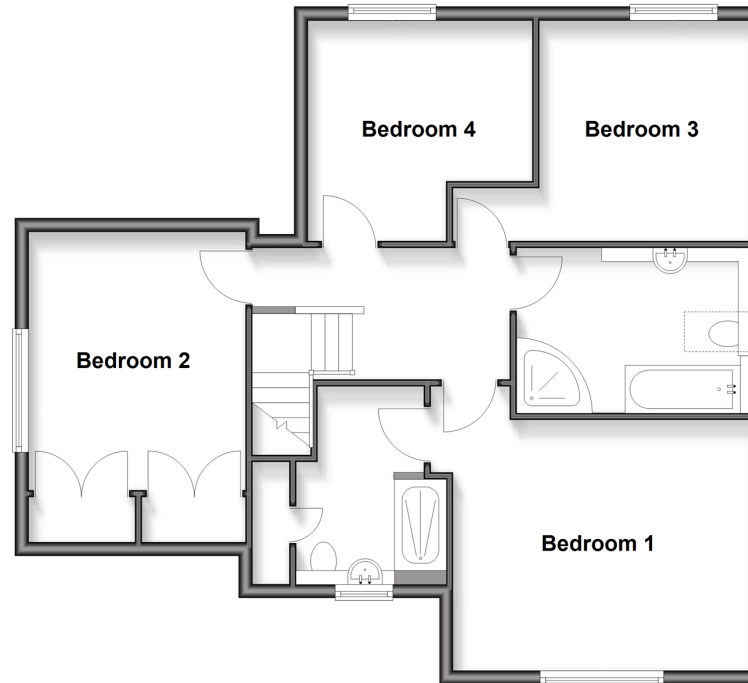
Ground Floor

Approx. 88.4 sq. metres (951.8 sq. feet)



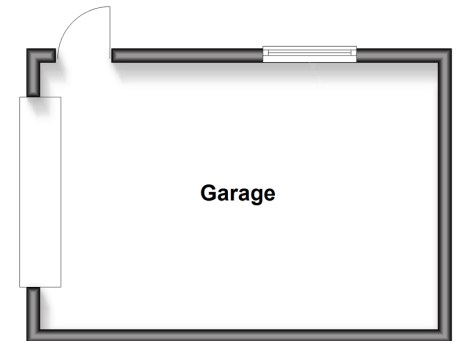
First Floor

Approx. 77.4 sq. metres (833.0 sq. feet)



Outbuilding

Approx. 22.6 sq. metres (243.6 sq. feet)



Accommodation

GROUND FLOOR

Entrance Hall

Study: 10'6 x 6'10 (3.20m x 2.08m)

Lounge: 17'2 x 12'8 (5.24m x 3.86m)

Kitchen: 13'3 x 12'10 (4.04m x 3.91m)

Dining Area: 13'8 x 13'5 (4.17m x 4.09m)

Sun Room: 12'1 x 10'5 (3.69m x 3.18m)

Cloakroom

FIRST FLOOR

Landing

Bedroom 1: 13'10 x 12'2 (4.22m x 3.71m)

En-Suite Shower Room: 9'11 x 7'3 (3.02m x 2.21m)

Bedroom 2: 12'6 x 10'5 (3.81m x 3.18m)

Bedroom 3: 10'10 x 10'9 (3.30m x 3.28m)

Bedroom 4: 10'8 x 10'6 (3.25m x 3.20m)

OUTBUILDING

Garage

OUTSIDE

Off Road Parking

Front & Rear Gardens



Main features

- Stunning modern home
- Flexible layout to include study and sun room
- Bedroom 1 has an en-suite shower room and beautiful views
- Free flowing design between the kitchen and dining areas
- Low maintenance landscaped garden with enviable countryside views



Nearest Schools

Primary Schools: St Nicholas C of E (Controlled) Primary 1.7 miles, Dymchurch Primary 2.3 miles, Greatstone Primary 4.1 miles
Secondary Schools: Marsh Academy 1.8 miles, Brockhill Park Performing Arts College 8.1 miles



Transport Information

Train Stations: Appledore 7.1 miles, Ham Street 10. miles



Address

Dymchurch Road, St. Mary's Bay, Romney Marsh, Kent, TN29



Directions

For directions to this property please contact us.



Wards
Helping you move forwards

Call New Romney Branch 01797 363745 ■ wardsofkent.co.uk



■ Through a Homewise Home For Life Plan people aged 60+ can secure this property for up to 59% less, by purchasing a Lifetime Lease

EPC RATING	CURRENT:	POTENTIAL:
	B(36)	A(93)

13526101/20260330/AQ/AQ