



Guide Price

£750,000

Freehold

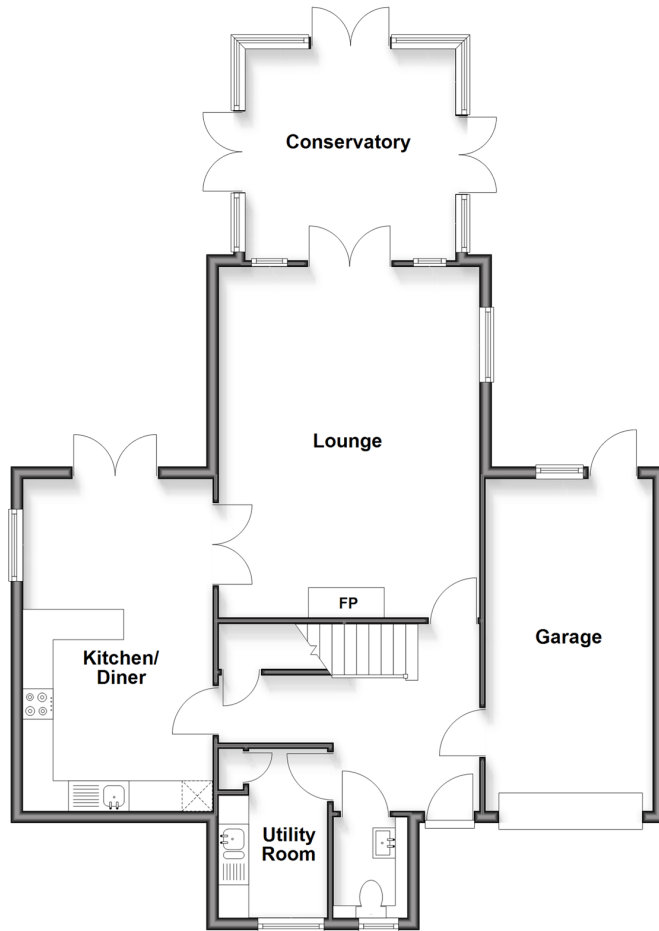
4x  2x  2x 

**Redhill Road, Rowland's
Castle, Hampshire, PO9**

cubitt & west
Helping you move forwards

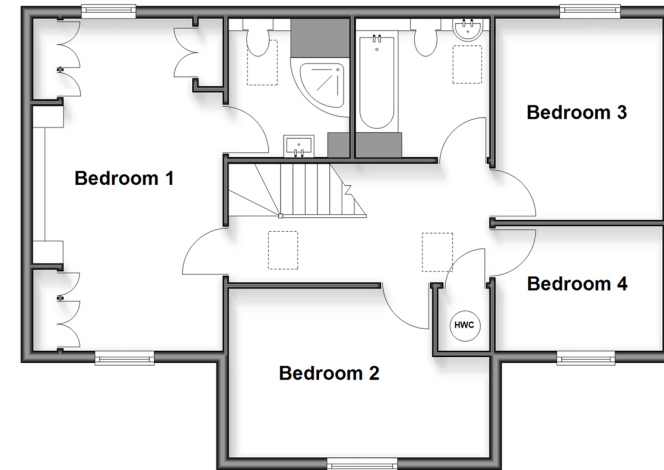
Ground Floor

Approx. 89.9 sq. metres (967.8 sq. feet)



First Floor

Approx. 64.5 sq. metres (693.9 sq. feet)



Accommodation

GROUND FLOOR

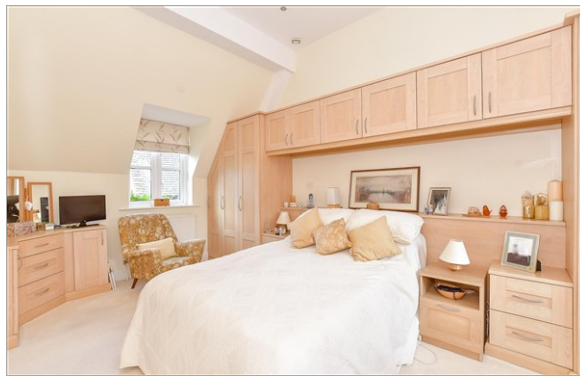
Entrance Hall
Lounge: 18'8 x 14'2 (5.69m x 4.32m)
Kitchen : 17'8 x 10'5 (5.39m x 3.18m)
Conservatory : 11'8 x 11'2 (3.56m x 3.41m)
Cloakroom
Utility Room

FIRST FLOOR

Landing
Bedroom 1: 18'3 x 11'6 (5.57m x 3.51m)
Shower En-Suite
Bedroom 2: 11'2 x 9'3 (3.41m x 2.82m)
Bedroom 3: 10'9 x 10'7 (3.28m x 3.23m)
Bedroom 4: 9'7 x 6'7 (2.92m x 2.01m)
Bathroom

OUTSIDE

Front & Rear Gardens
Garage & Off Road Parking



Main features

- Fabulous detached family home
- Desirable location in Rowlands Castle, a short walk to the village green and public transport
- Bright & spacious accommodation throughout
- Garage & off road parking
- Sunny rear garden
- Utility room
- Private cul-de-sac location



Nearest Schools

Primary Schools: Rowlands Castle St John's C of E Controlled Primary 0.1 miles, Sharps Copse Primary and Nursery School 1.2 miles, Front Lawn Junior School 1.2 miles



Transport Information

Train Stations: Rowlands Castle 0.5 miles, Warblington 2.3 miles, Havant 2.4 miles



Address

Redhill Road, Rowland's Castle, Hampshire, PO9



Directions

For directions to this property please contact us.



cubitt&west
Helping you move forwards

Call Emsworth Branch 01243 377888 ■ cubittandwest.co.uk



■ Legal advice should be taken to verify fixtures/fittings, planning, alterations and/or lease details ■ Appliances & services are untested, dimensions are approximate and floor plans are not to scale



44608029/20251020/JH/JH