



£325,000

Manor Court Road, Bromsgrove B60 3NP

GUEST
ESTATE AGENTS

Two bedroom detached bungalow
Sought after residential setting
Positioned on quiet, open road
No upward chain
Spacious layout with generous rooms
Large living/dining room
Long driveway
Garage access from driveway & garden
Private, low-maintenance rear garden
Excellent scope for modernisation & adding value

Set within a quiet and highly regarded road, this detached two bedroom home presents an increasingly rare opportunity to acquire a property with genuine scope for transformation. While requiring modernisation, the space, plot and setting combine to offer exceptional potential, making it an exciting prospect for buyers looking to create a long term home tailored to their own style and needs.

Occupying an attractive position on Manor Court Road, the property enjoys a particularly pleasant outlook to the front, with open green spaces and mature trees creating a sense of openness that is not often found. The surrounding properties are all bungalows, contributing to a peaceful and established residential environment.

The property is set back behind a generous front lawn, with a long tarmac driveway running along the right hand side, providing ample parking and leading to a single garage. The garage benefits from both front access and a side door into the garden, adding to its practicality. A side gate from the driveway also provides direct access to the rear garden.

Entry is via a side door into a notably wide and light filled hallway, enhanced by full height glazing and a fully double glazed door, creating an immediate sense of space and natural light. From here, all rooms are easily accessible, reinforcing the practicality of single storey living.

To the left, the living/dining room is particularly impressive in scale, with two large windows overlooking the front aspect and drawing in excellent natural light. The room offers flexibility for both seating and dining arrangements, and a frosted internal window connects visually with the adjacent kitchen. The kitchen itself is fitted with a range of wall and base units, along with a useful pantry cupboard. A door provides access to the side of the property, offering further convenience for day-to-day living.

To the rear of the bungalow are two well-proportioned bedrooms, both featuring fitted wardrobes and large windows overlooking the garden, creating bright and comfortable sleeping spaces. A family bathroom completes the internal accommodation



Two bedroom detached bungalow
Sought after residential setting
Positioned on quiet, open road
No upward chain
Spacious layout with generous rooms
Large living/dining room
Long driveway
Garage access from driveway & garden
Private, low-maintenance rear garden
Excellent scope for modernisation & adding value

Set within a quiet and highly regarded road, this detached two bedroom home presents an increasingly rare opportunity to acquire a property with genuine scope for transformation. While requiring modernisation, the space, plot and setting combine to offer exceptional potential, making it an exciting prospect for buyers looking to create a long term home tailored to their own style and needs.

Occupying an attractive position on Manor Court Road, the property enjoys a particularly pleasant outlook to the front, with open green spaces and mature trees creating a sense of openness that is not often found. The surrounding properties are all bungalows, contributing to a peaceful and established residential environment.

The property is set back behind a generous front lawn, with a long tarmac driveway running along the right hand side, providing ample parking and leading to a single garage. The garage benefits from both front access and a side door into the garden, adding to its practicality. A side gate from the driveway also provides direct access to the rear garden.

Entry is via a side door into a notably wide and light filled hallway, enhanced by full height glazing and a fully double glazed door, creating an immediate sense of space and natural light. From here, all rooms are easily accessible, reinforcing the practicality of single storey living.

To the left, the living/dining room is particularly impressive in scale, with two large windows overlooking the front aspect and drawing in excellent natural light. The room offers flexibility for both seating and dining arrangements, and a frosted internal window connects visually with the adjacent kitchen. The kitchen itself is fitted with a range of wall and base units, along with a useful pantry cupboard. A door provides access to the side of the property, offering further convenience for day-to-day living.

To the rear of the bungalow are two well-proportioned bedrooms, both featuring fitted wardrobes and large windows overlooking the garden, creating bright and comfortable sleeping spaces. A family bathroom completes the internal accommodation.

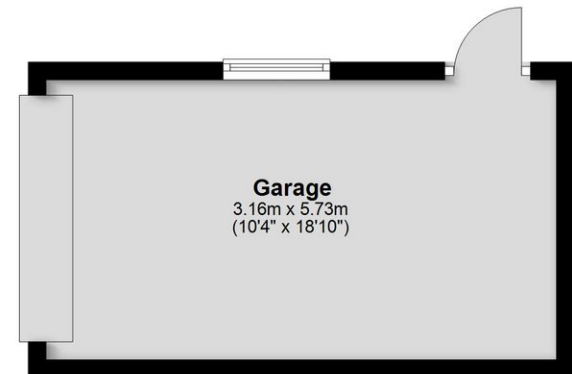
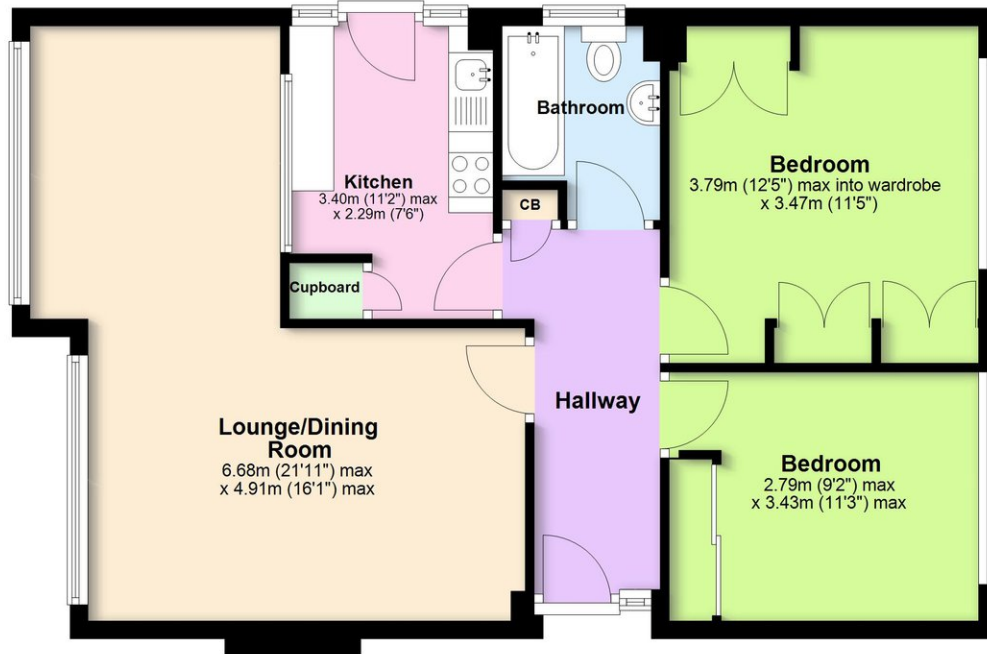




Floorplan

Ground Floor

Approx. 86.5 sq. metres (930.8 sq. feet)



Total area: approx. 86.5 sq. metres (930.8 sq. feet)

The overall area includes the garage. Garage position is approx. Whilst every attempt has been made to ensure the accuracy of this floorplan, measurements of doors, windows, rooms and any other item are approximate, and no responsibility is taken for any error, omission, or mis-statement. This plan is for illustrative purposes only and should be used as such by any prospective purchaser.
Plan produced using PlanUp.

Want to view this property?

Call us on 01527 306420, or email hello@guestestateagents.com

Property to sell?

Guest Estate Agents can offer you an outstanding level of service, successfully selling property in and around Bromsgrove. For a free valuation, call us on 01527 306420, or email hello@guestestateagents.com

Independent mortgage advice

We recommend Guest Independent Mortgage Advice. Call 01527 306425, or email hello@guestindependent.com to arrange an initial chat with no pressure or obligation.

Solicitor / Conveyancer

Getting the right firm to do the legal work can make or break a sale. Just ask us for a recommendation / quote,

Lettings

For fully managed lets or just a tenant find, we recommend Douglas Lettings. More info at www.douglaslettings.co.uk

Everything else

For surveys, removals, EPCs, or any other property related needs, we can recommend someone reliable to help you.

Our contact details

Phone: 01527 306420

Email: hello@guestestateagents.com

Address: 1 St Godwald's Road, Aston Fields, Bromsgrove B60 3BN

Disclaimer

You should not rely on statements made by Guest Estate Agents in these details, or by word of mouth, or in writing, as being factually accurate about the property, its condition, or its value. The tenure needs to be verified via your solicitors. Areas, measurements and distances are approximate. Any reference to alterations or extensions, or use of, or any part of the property does not mean that the necessary planning, building regulations or any other consent has been obtained. A buyer must find out by inspection or other ways to verify that these matters have been dealt with and that the information is correct.

