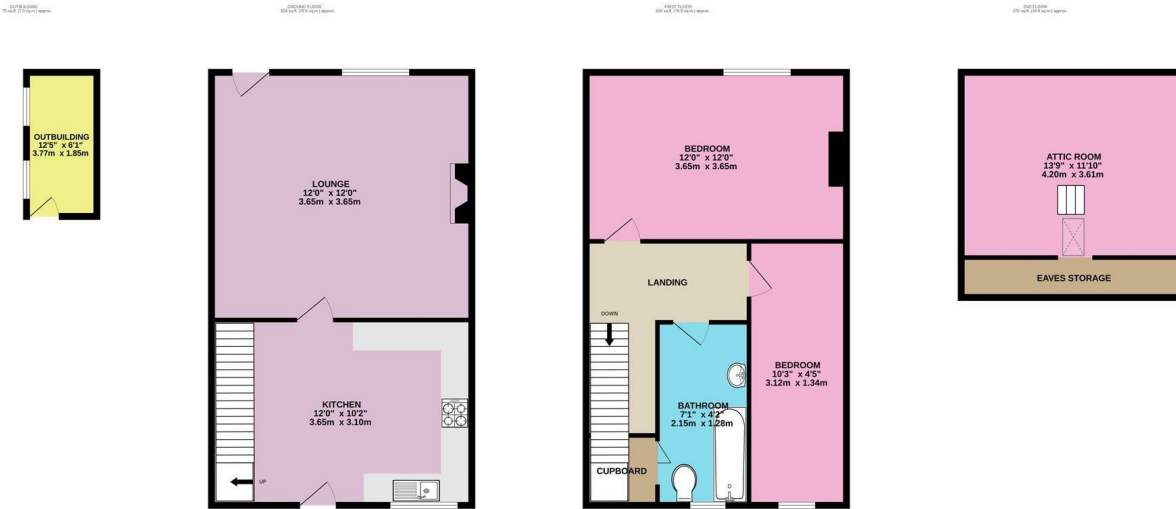




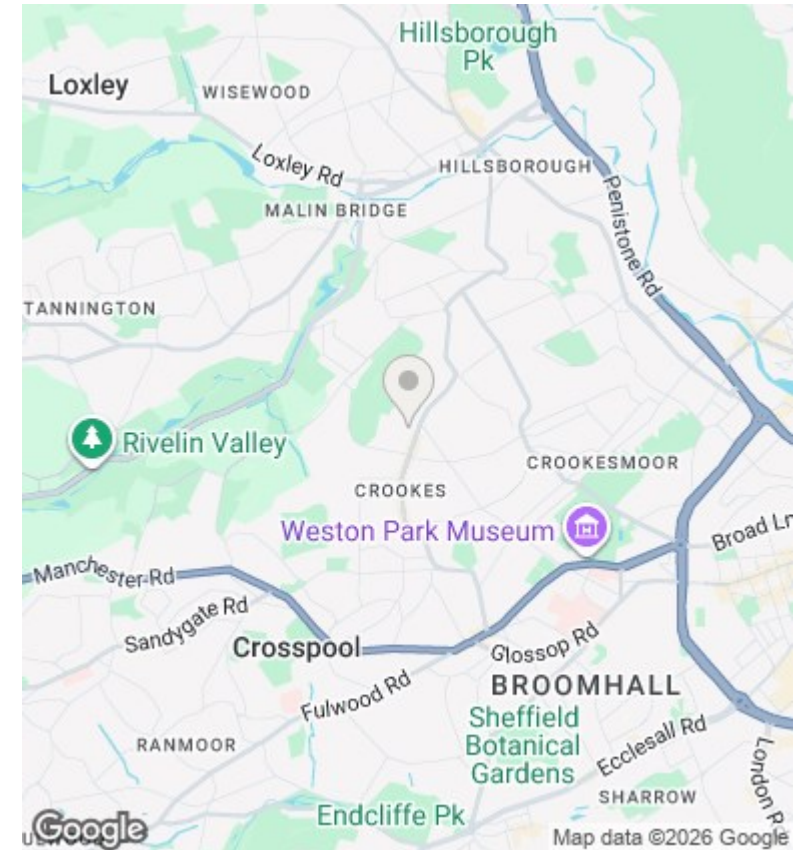
## 24 Loxley View Road, Sheffield, S10 1QZ

Offers Over £210,000

- Perfect for a first-time buyer
- Two bedrooms
- Council tax band A
- Freehold
- Contemporary kitchen
- Low maintenance rear garden
- Bolehills Park at the end of the road
- Cosy living room
- Plenty of storage space in attic and outbuilding
- Short walk to local shops, cafes, pubs and restaurants



TOTAL FLOOR AREA: 2100 sq.ft. (195.1 sq.m.) approx.  
 Whilst every attempt has been made to ensure the accuracy of the floorplan contained here, measurements of doors, windows, rooms and any other items are approximate and no responsibility is taken for any error, omission or mis-statement. This plan is for illustrative purposes only and should be used as such by any prospective purchaser. The services, systems and appliances shown have not been tested and no guarantee as to their operability or efficiency can be given.  
 Made with Metropix ©2025



## Directions

## Viewings

Viewings by arrangement only. Call 01142 687777 to make an appointment.

## Council Tax Band

C

## EPC Rating:

D

Energy Efficiency Rating		
	Current	Potential
<i>Very energy efficient - lower running costs</i>		
(92 plus) <b>A</b>		
(81-91) <b>B</b>		
(69-80) <b>C</b>		<b>79</b>
(55-68) <b>D</b>	<b>68</b>	
(39-54) <b>E</b>		
(21-38) <b>F</b>		
(1-20) <b>G</b>		
<i>Not energy efficient - higher running costs</i>		
<b>England &amp; Wales</b>	EU Directive 2002/91/EC	