



Long Drive, Greenford – UB6 8NA

In Excess of £550,000 | Freehold



LAWRENCE RAND



Key Features & Description

- Three Bedrooms
- Driveway
- Close To Local Amenities
- Potential To Extend (STPP)

Located on the popular Long Drive in Greenford, this three-bedroom family home offers a fantastic opportunity for buyers looking to modernise and add their own personal touch. The property comprises a welcoming entrance hallway, a spacious reception room, and a separate kitchen with access to the rear garden. Upstairs, there are three well-proportioned bedrooms and a family bathroom.

The property further benefits from a private rear garden and potential for off-street parking to the front (subject to the usual planning permissions). While the house would benefit from modernisation throughout, it provides excellent potential to create a beautiful family home.

Conveniently situated close to a range of local amenities, reputable schools, and excellent transport links, the property offers easy access to nearby shops, bus routes, and stations providing connections into Central London.

Presented with care by Lawrence Rand – helping you find the place you'll love to call home.





Nearest Stations

Greenford Station – approx 0.2 miles
South Greenford Station – approx 0.7 miles
Sudbury Hill Station – approx 1.3 miles

Verified Material Information:

Council Tax band: D

EPC Energy Efficiency Rating: E

Suppliers:

Electricity supply: Mains,

Water supply: Mains water

Sewerage: Mains

Heating: Gas central heating

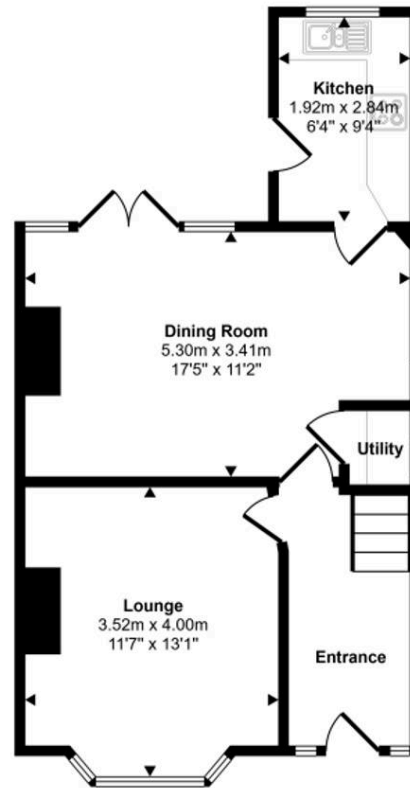
Broadband & mobile coverage:

Broadband: FTTP (Fibre to the Premises)

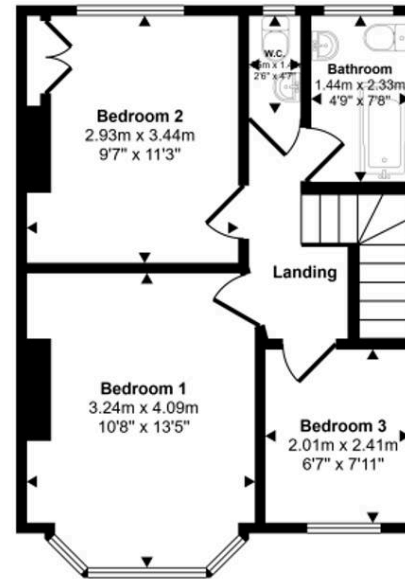
Mobile coverage: O2 - Excellent, Vodafone -
Excellent, Three - Excellent, EE - Excellent



Approx Gross Internal Area
85 sq m / 912 sq ft



Ground Floor
Approx 45 sq m / 485 sq ft



First Floor
Approx 40 sq m / 427 sq ft

Whilst every attempt has been made to ensure the accuracy of the floor plan contained here, measurements of doors, windows, rooms and any other items are approximate and no responsibility is taken for any error, omission, or mis-statement. The measurements should not be relied upon for valuation, transaction and/or funding purposes. This plan is for illustrative purposes only and should be used as such by any prospective purchaser or tenant.

Lawrence Rand
51 Victoria Road, Ruislip - HA4 9BH
01895 632211

sales@lawrence-rand.co.uk
www.lawrence-rand.co.uk/

Lawrence Rand Limited has made every reasonable effort to ensure the accuracy of the information provided. However, we accept no responsibility for errors, omissions, or misstatements. All measurements, distances, and descriptions are approximate and for guidance only. Prospective purchasers or tenants must verify all details independently. Some images may include AI-generated virtual staging to illustrate the potential of the property and are for visual guidance only. No warranty is given or implied, and these particulars do not form part of any offer or contract. Lawrence Rand reserves the right to amend or withdraw any property without notice.