



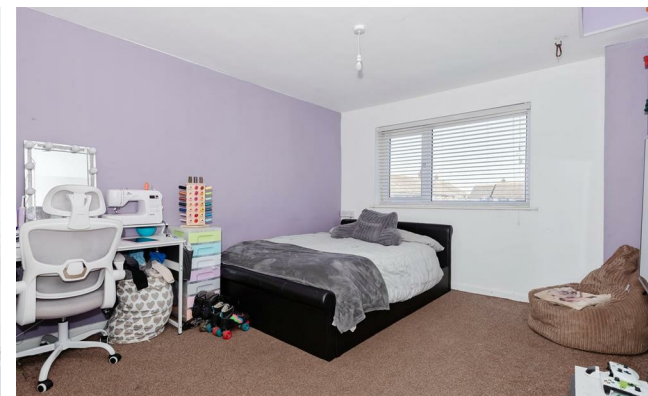
4



2



2



### Summary

We are pleased to present this extended four bedroom terrace house located in Goring. Living accommodation is set over three floors that comprises four good sized bedrooms, with one having an en-suite and the downstairs benefitting from an open plan area with kitchen, lounge and dining room. The rear garden is low maintenance with side access and offers a fully powered cabin currently used as a gym. The property is well presented and has other benefits like a garage, double glazing, gas fired central heating and is positioned at the end of a quiet close with schools, shops and transport links nearby too. Viewing advised.

### Key Features

- Terrace House
- West Garden
- Quiet Close
- Freehold
- Four Bedrooms
- Modern Finish
- EPC - C
- Council Tax Band - B

# Description

## Entrance Hall

## Kitchen

8'8" x 12'9"

## Lounge

11'10" x 14'11"

## Dining Room

11'1" x 12'2"

## First Floor Landing

## Bedroom Two

10'10" x 13'5"

## Bedroom Three

10'11" x 11'10"

## Bedroom Four

6'1" x 11'11"

## Second Floor Landing

## Bedroom One

13'10" x 17'2"

## Shower Room

3'11" x 6'2"

## En-Suite

3'10" x 6'3"

## Rear Garden

West facing, low maintenance, side access

## Garden Room

7'8" x 15'6"

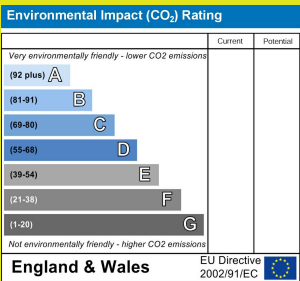
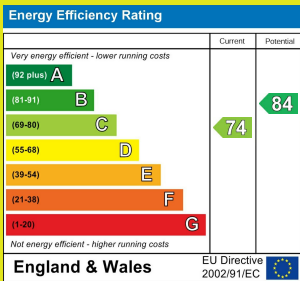
Timber frame, power and lighting.

## Front Garden

# Floor Plan



Total area: approx. 119.2 sq. metres (1283.0 sq. feet)



The information provided about this property does not constitute or form any part of an offer or contract, nor may it be regarded as representations. All interested parties must verify accuracy and your solicitor must verify tenure/lease information, fixtures and fittings and, where the property has been extended/converted, planning/building regulation consents. All dimensions are approximate and quoted for guidance only as are floor plans which are not to scale and their accuracy cannot be confirmed. References to appliances and/or services does not imply that they are necessarily in working order or fit for the purpose.