



Price
£550,000

Freehold

4x  2x  2x 

**Eastern Avenue, Ilford,
Essex, IG2**

OVER 60?

Secure this property
for up to **59% less!**

 **DOUGLAS
ALLEN**
Helping you move forwards



Main features

- Terraced house within the Redbridge Borough
- Spacious loft room
- Bathroom plus en-suite
- Large rear garden
- Galley style kitchen with lots of cupboard space
- Bus links to Newbury Park Station

Accommodation

GROUND FLOOR

Entrance Hall

Lounge/Dining Room: 13'5 x 13'2 (4.09m x 4.02m) plus 12'3 x 11'5 (3.74m x 3.48m)

Kitchen: 12'5 x 7'6 (3.79m x 2.29m)

FIRST FLOOR

Landing

Bedroom 2: 12'0 x 11'5 (3.66m x 3.48m)

Bedroom 3: 12'4 x 10'7 (3.76m x 3.23m)

Bedroom 4: 8'8 x 7'4 (2.64m x 2.24m)

Bathroom

Separate Toilet

SECOND FLOOR

Bedroom 1: 15'8 x 13'3 (4.78m x 4.04m)

Shower Room

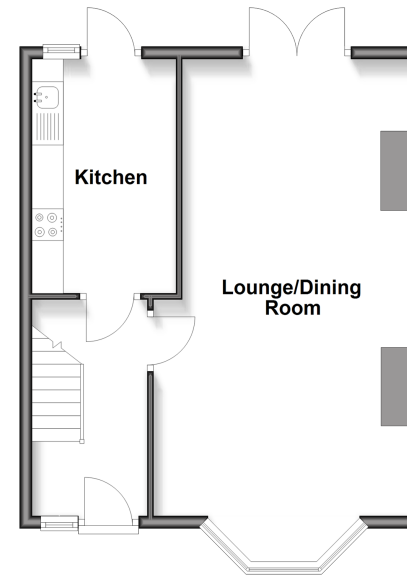
OUTSIDE

Rear Garden

Off Street Parking

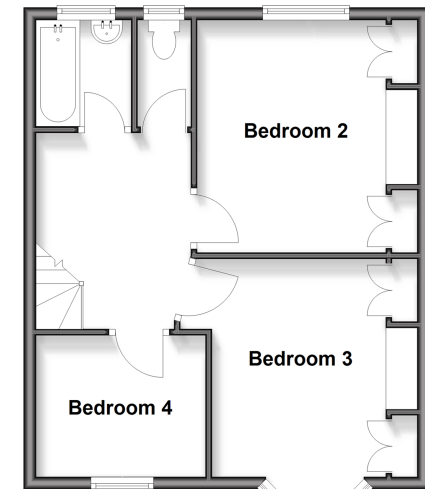
Ground Floor

Approx. 44.4 sq. metres (477.4 sq. feet)



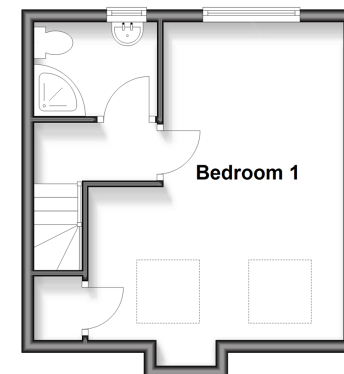
First Floor

Approx. 44.1 sq. metres (475.2 sq. feet)



Second Floor

Approx. 25.3 sq. metres (272.1 sq. feet)



Call Ilford - 020 8518 0044 ■ douglasallen.co.uk

- Legal advice should be taken to verify fixtures/fittings, planning, alterations and/or lease details
- Appliances & services are untested, dimensions are approximate and floor plans are not to scale
- Through a Homewise Home For Life Plan people aged 60+ can secure this property for up to 59% less, by purchasing a Lifetime Lease



52016958/20260111/CN/MH