



23 Garden Village, Plymstock, Plymouth, PL9 7EN



Price £245,000



Situated in the highly desirable area of Garden Village, Plymstock, is this very well presented and spacious semi-detached home in central Plymstock.

Upon entering, a welcoming porch leads into a hall where the stairs rise to the first floor, a door opens into a spacious dining room, ideal for family meals and entertaining. To the front, a bright and generously sized lounge provides a comfortable space for relaxation. The kitchen is well-equipped with a range of wall and base units, offering ample storage and a door provides access to the rear garden.

On the first floor, the property offers two well-proportioned double bedrooms. A modern three-piece bathroom suite completes the first floor, featuring a bath with shower over, wash hand basin set in a vanity unit, and W.C.

Externally, the property has off-road parking for two vehicles. To the rear, a generous garden has a decked seating area and steps down to a lawn garden ideal for enjoying sunny days or relaxing evenings.

This property is close to an array of local amenities including the Broadway Shopping Centre, Doctor's Surgeries and Dental Surgeries. Recreational facilities can be found close by to include the Mount Batten Water Sports Centre; Staddon Heights Golf Course and the picturesque countryside and coastlines found at the South Hams which offers stunning walks along the South West coastal path. Transport links provide access to the vibrant Plymouth City Centre and the South Hams.



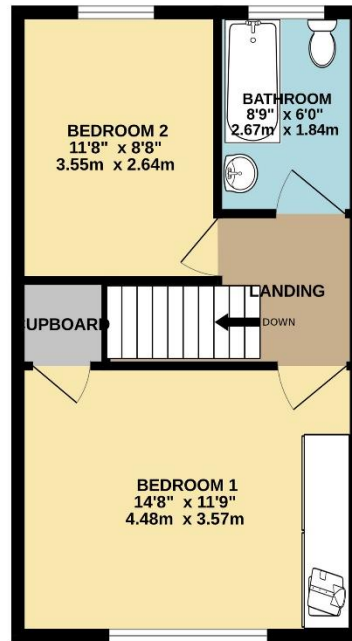
To view this property call Lang Town & Country Estate Agents on **01752 456000**

www.langtownandcountry.com



GROUND FLOOR
527 sq.ft. (49.0 sq.m.) approx.

1ST FLOOR
398 sq.ft. (37.0 sq.m.) approx.



TOTAL FLOOR AREA: 925 sq.ft. (86.0 sq.m.) approx.
Measurements are approximate. Not to scale. Illustrative purposes only
Made with Metropix ©2026



Lang Town & Country
6 The Broadway
Plymouth
PL9 7AU
Tel: 01752 456000
Email: plymstock@langtownandcountry.com
www.langtownandcountry.com

Lang Town & Country endeavour to ensure the accuracy of property details produced and displayed, we have not tested any apparatus, equipment, fixtures, fittings or services and so cannot verify that they are connected, in working order or fit for purpose. A buyer must check the availability of any property and make an appointment to view before embarking on any journey to see a property.

