



Luxborough Street | | London | W1U

Asking Price - £3,250 Per month



- Spacious 1-bedroom flat
- Fully fitted kitchen
- Near Marylebone Village shops
- Large Bathroom
- Close to Baker Street station

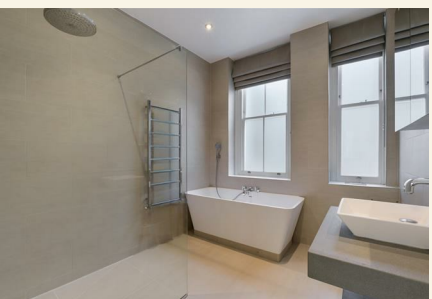
Situated in the heart of Marylebone, this beautifully finished one-bedroom apartment is set within an elegant red-brick mansion block.

Located on the raised ground floor, the property combines period charm with contemporary design. The bright and spacious reception room is enhanced by a south-westerly facing bay window, while the well proportioned bedroom features fitted wardrobes. The luxurious wet room offers a freestanding bath and separate shower, with underfloor heating to both the kitchen and bathroom. The kitchen is further complemented by integrated Siemens appliances.

Additional features include a video intercom system, CCTV, and recently refurbished communal areas.

Luxborough Street is a quiet, residential street ideally positioned in the heart of Marylebone, one



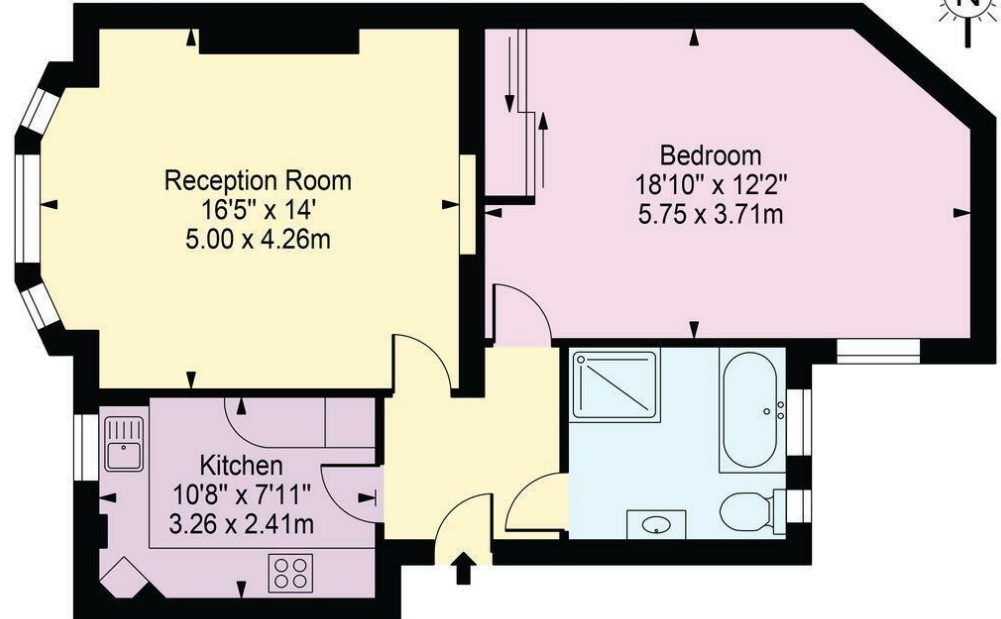
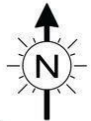


of central London's most sought-after neighbourhoods. Residents benefit from immediate access to the boutique shops, cafés and restaurants of Marylebone Village, as well as the vibrant atmosphere of nearby Chiltern Street.

The area is exceptionally well connected, with Baker Street and Marylebone stations both within easy walking distance, providing excellent transport links across London and beyond. Regent's Park is also close by, offering expansive green space for leisure and recreation.

**Cheviot Court**

Approx. Gross Internal Area  
61.45 sq m / 661 sq ft

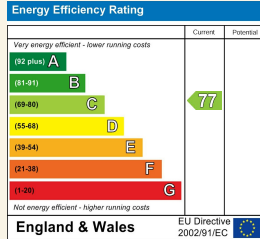


**Ground Floor**

For Illustration Purposes Only

This Floor Plan Should Be Used As A General Outline For Guidance Only And Does Not Constitute In Whole Or In Part An Offer Or Contract. Any Intending Purchaser Or Lessee Should Satisfy Themselves By Inspection, Searches, Enquiries And Full Survey As To The Correctness Of Each Statement. Any Areas, Measurements Or Distances Quoted Are Approximate And Should Not Be Used To Value A Property Or Be The Basis Of Any Sale Or Let.

**Council Tax Band G    EPC Rating C**



24 Bristol Gardens  
London  
W9 2JQ  
hello@draperlondon.com  
0203 143 1900