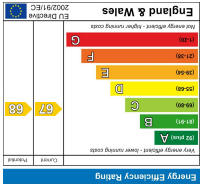
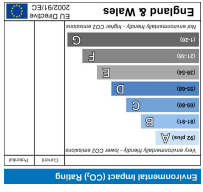
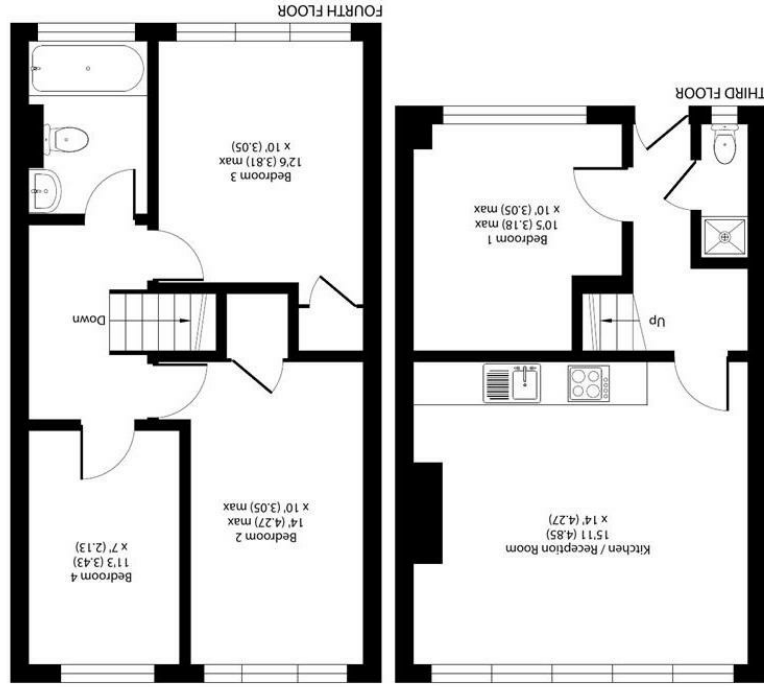


All appliances listed in these details are only 'as seen' and have not been tested by Gibson Lane, nor have we sought certification of warranty or service, unless otherwise stated. Measurements, areas and distances are approximate. Floor plans and photographs are for guidance purposes only and must not be relied upon for any purpose. These details are offered on the understanding that all negotiations are made through this company. Neither these particulars, nor verbal representations, form part of any offer or contract, and their accuracy cannot be guaranteed.

Environment Impact (CO ₂) Rating	Energy Efficiency Rating
	

RICS Certified Property Measurement
 Floor plan produced in accordance with RICS Property Measurement Standards incorporating International Property Measurement Standards (IPMS Residential). © Gibson Lane, 2024.



Approximate Area = 835 sq ft / 77.5 sq m
 For identification only - Not to scale

34 Richmond Road
 Kingston upon Thames
 Surrey
 KT2 5ED
 www.gibsonlane.co.uk
 Tel: 020 8546 5444





Sherfield Gardens,
 Roehampton, London, SW15 4PP



- Available 26th September 2026!
- Split Level Flat
- First Floor
- 2 Double Bedrooms
- 2 Single Bedrooms
- Open-Plan Kitchen/Living Room
- Tiled Bathroom With Bath & Shower
- Ideal For Students @ Roehampton University
- EPC Rating - D
- Council Tax Band - C



£2,500 Per Calendar Month

Sherfield Gardens,
Roehampton,
London,
SW15 4PP



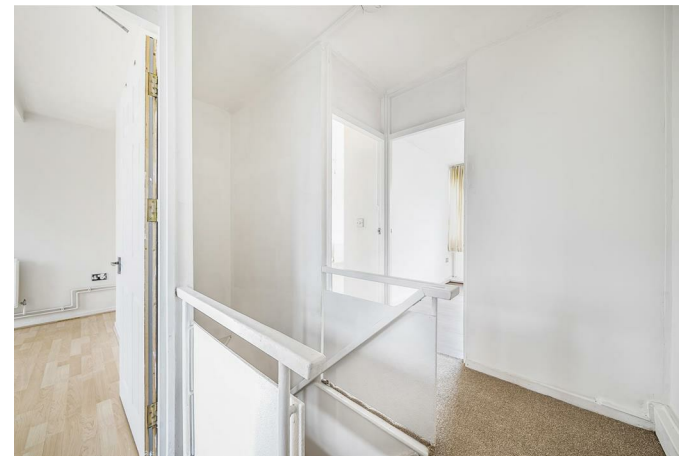
Description:

AVAILABLE 26th SEPTEMBER 2026

Gibson Lane present to the market a four bedroom first floor maisonette providing open-plan living space. This property offers a spacious open plan kitchen/living room, two double bedrooms, two single bedrooms, ground floor shower room and a first floor bathroom with bath & shower. All amenities just a short walk away and an ideal location for students who attend Whitelands, Froebel, Roehampton Vale and Kingston Hill Campuses.

Location:

Sherfield Gardens is located just a short walk from the ever popular Richmond Park. The location is well served with many different transport links which include buses to Putney, Hammersmith and Kingston, the A3 is in very close by which provides quick access in and out of London. Close to various Universities and Queen Mary's Hospital.



Furnishing: Furnished
Local Authority: Wandsworth
Council Tax Band: D
Available Date: 26th September 2026
Deposit: £2,884
Tenancy Term: Long Term