

GILMORE ESTATES

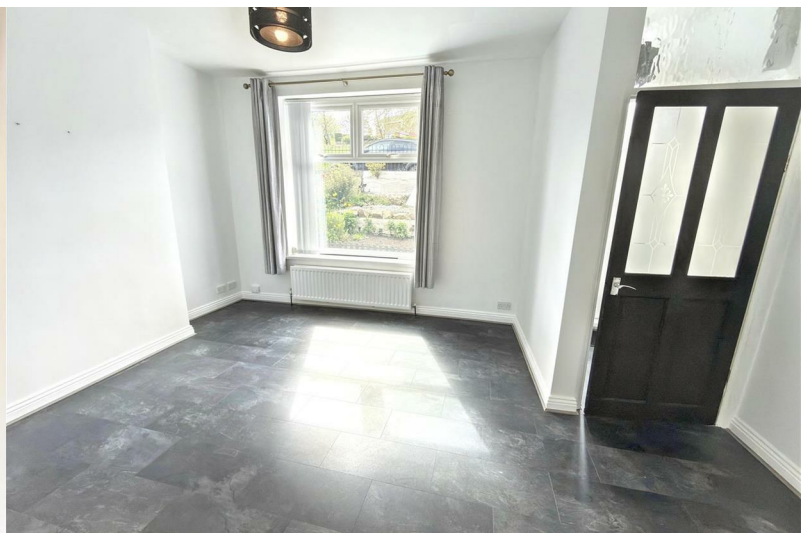
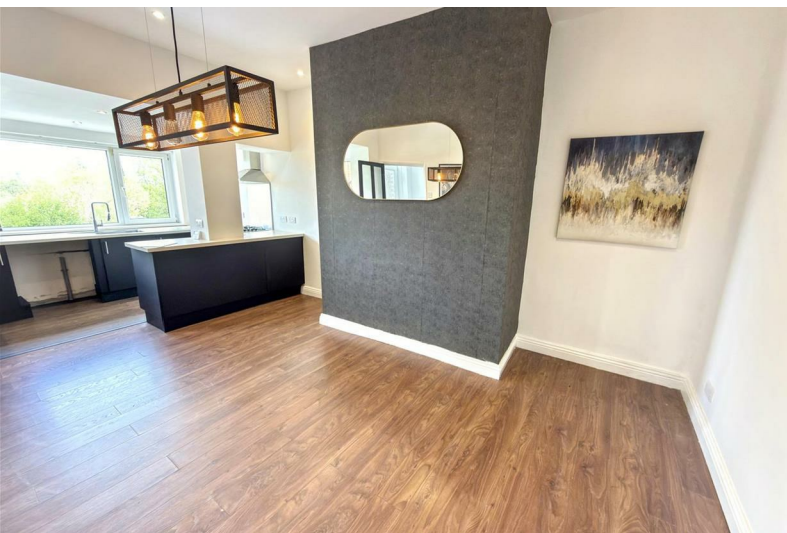
Property Sales & Lettings



Beaumont Terrace

, Prudhoe, NE42 6JZ

£185,000



Beaumont Terrace

, Prudhoe, NE42 6JZ

£185,000



Entrance Hallway

5'4" x 3'1" (1.63 x 0.94)

Composite door, LVT flooring.

Lounge

16'4" x 11'9" (5.00 x 3.60)

Upvc window to front aspect, central heating radiator, LVT flooring.

Dining Kitchen

21'11" x 12'9" (6.70 x 3.91)

Under stairs cupboard, base units with laminate worktop surfaces, plumbed for automatic washer, integrated oven, gas hob and extractor hood, stainless steel sink unit and drainer with mixer tap, central heating radiator, inset spotlights, laminate flooring, UPVC double glazed windows to rear and side.

Rear Hallway

3'2" x 3'4" (0.99 x 1.03)

Upvc door to rear yard.

First Floor Landing

10'7" x 6'7" (3.23 x 2.01)

Central heating radiator, inset spotlights.

Bedroom One

15'4" x 9'1" (4.68 x 2.78)

Upvc window to rear with views, central heating radiator.

Bedroom Two

9'11" x 12'5" (3.04 x 3.80)

Upvc window to front aspect, central heating radiator.

Bedroom Three

9'1" x 6'0" (2.77 x 1.84)

Upvc window to front aspect, central heating radiator, laminate flooring.

Bathroom

6'7" x 8'6" (2.01 x 2.60)

UPVC double glazed window to rear, suite comprising :- Bath with electric shower over and screen, w.c, pedestal wash hand basin, cupboard housing boiler, towel rail, extractor.

Gardens

Front garden to the front.

Enclosed yard to the rear and enclosed garden across lane.



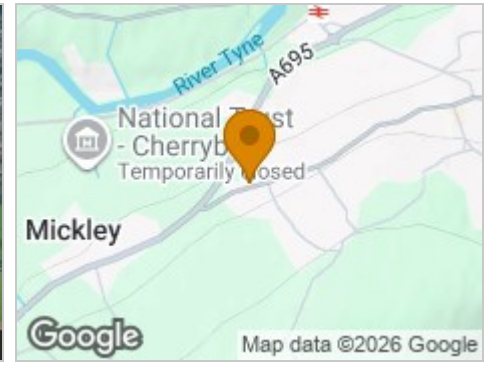
Road Map



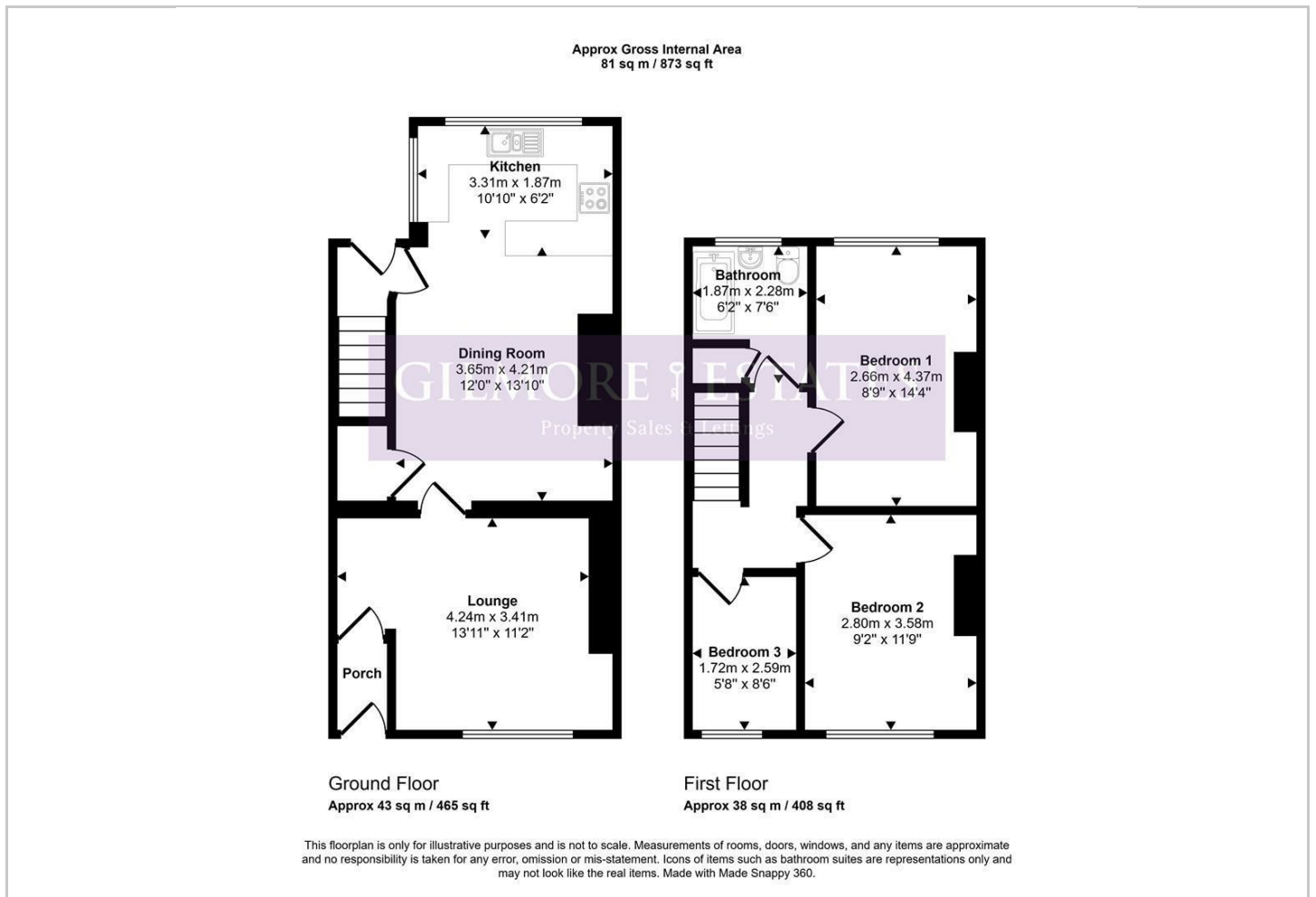
Hybrid Map



Terrain Map



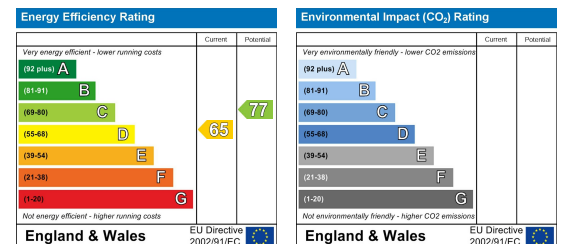
Floor Plan



Viewing

Please contact our Gilmore Estates Office on 01661 831224 if you wish to arrange a viewing appointment for this property or require further information.

Energy Efficiency Graph



These particulars, whilst believed to be accurate are set out as a general outline only for guidance and do not constitute any part of an offer or contract. Intending purchasers should not rely on them as statements of representation of fact, but must satisfy themselves by inspection or otherwise as to their accuracy. No person in this firm's employment has the authority to make or give any representation or warranty in respect of the property.