



OAKFIELD

Seaside, Eastbourne, BN22 7QU

£725 Per Calendar Month





## Seaside, Eastbourne, BN22 7QU

This cosy studio flat is ideally located in the heart of seaside Eastbourne, just moments from the beach and vibrant seafront. Offering bright and versatile living space, the property features an open-plan living and sleeping area with large windows that allow plenty of natural light.

The kitchenette is neatly arranged and provides practical storage and worktop space, while the shower room is well equipped allows for plenty of room.

Perfectly positioned close to local shops, cafés, and excellent transport links, this studio is ideal for those seeking a coastal lifestyle with everyday convenience.

An annual household income of £21,750 is required to meet the affordability criteria for this property.







### Living Area

10'2" x 19'6" (3.10 x 5.96)

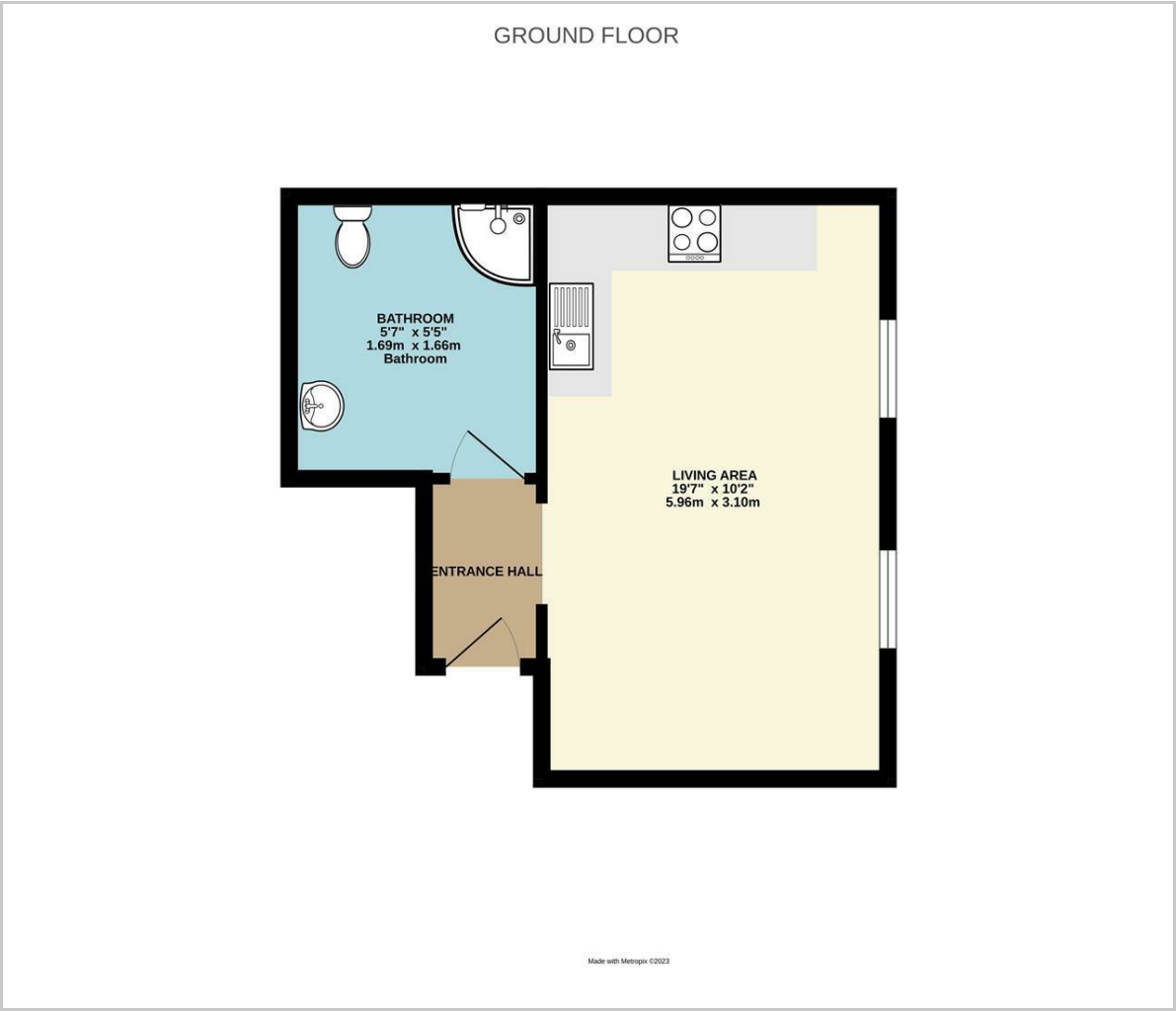
### Shower Room

5'6" x 5'5" (1.69 x 1.66)

**Council Tax Band A - £1538.51 per annum**



Floor Plan

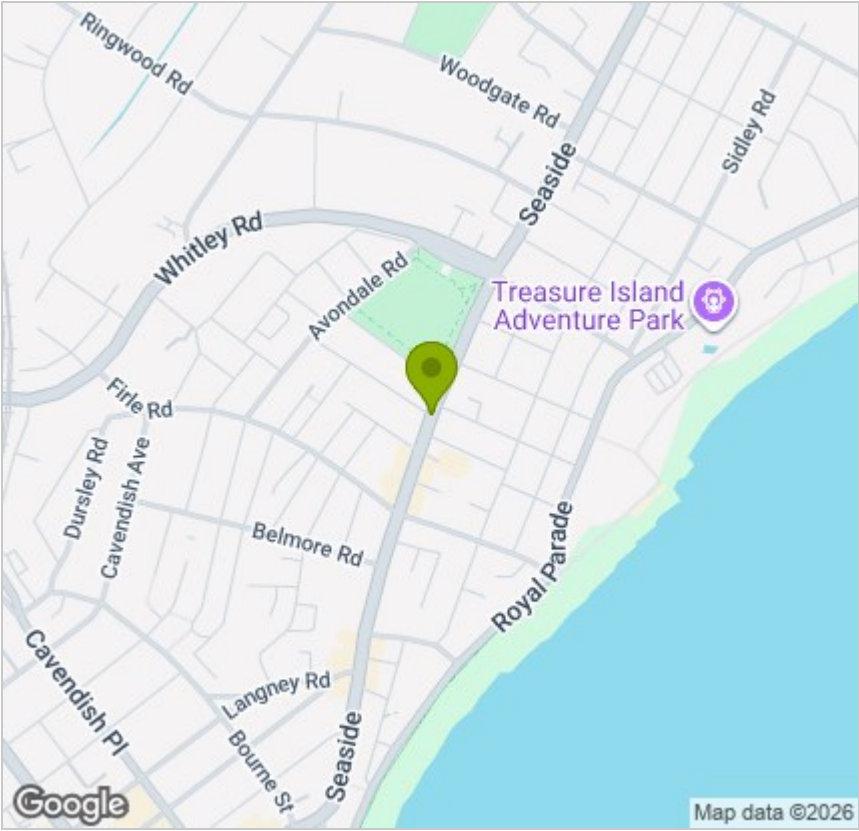


Viewing

Please contact us on 01323 405553 if you wish to arrange a viewing appointment for this property or require further information.

These particulars, whilst believed to be accurate are set out as a general outline only for guidance and do not constitute any part of an offer or contract. Intending purchasers should not rely on them as statements of representation of fact, but must satisfy themselves by inspection or otherwise as to their accuracy. No person in this firms employment has the authority to make or give any representation or warranty in respect of the property.

Area Map



Energy Efficiency Graph

