



## Mount Pleasant Crescent, N4 £300,000

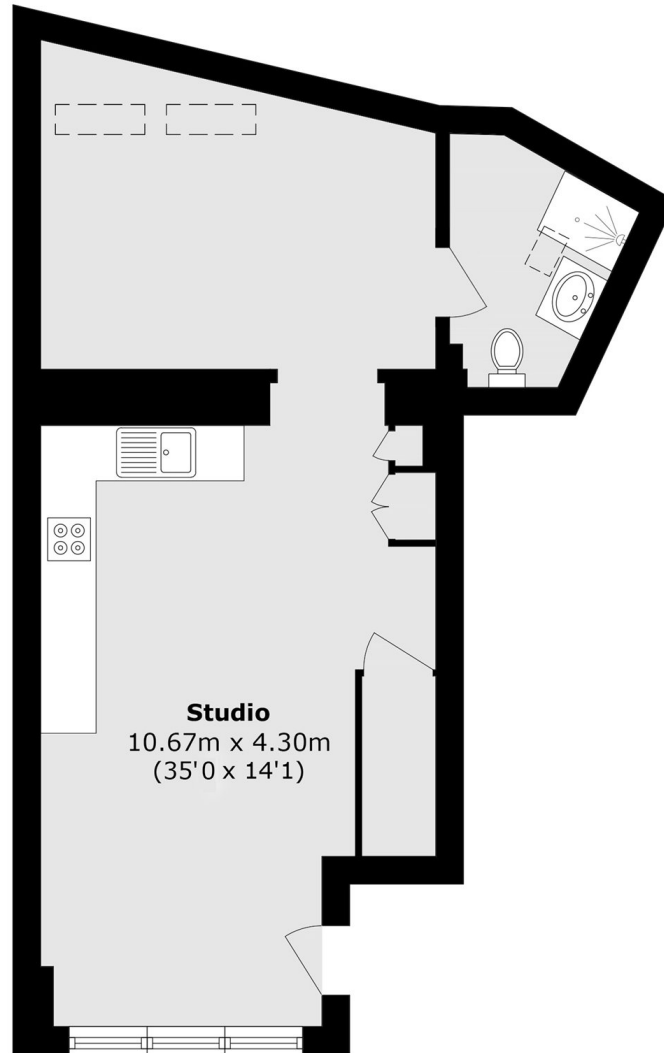
This one bedroom ground floor flat, located in the heart of Stroud Green, is presented in a good decorative order and features an open plan kitchen reception area and a modern bathroom.

Mount Pleasant Crescent is a quiet, residential street, perfectly positioned close to Crouch Hill station (Great Northern, Thameslink, Victoria and Piccadilly Lines) as well as an array of shops, bars, restaurants and cafés.

### Features

- Open Plan Reception
- Chain Free
- Excellent Location
- Modern Bathroom
- Leasehold
- Great Transport

# Mount Pleasant Crescent, London, N4



Total area (approx.): 45.7 sq. m (491.9 sq. ft)