



RESIDE
—
MANCHESTER



15 Silvercroft Street, Manchester, M15 4YW
£1,900 PCM



2



2

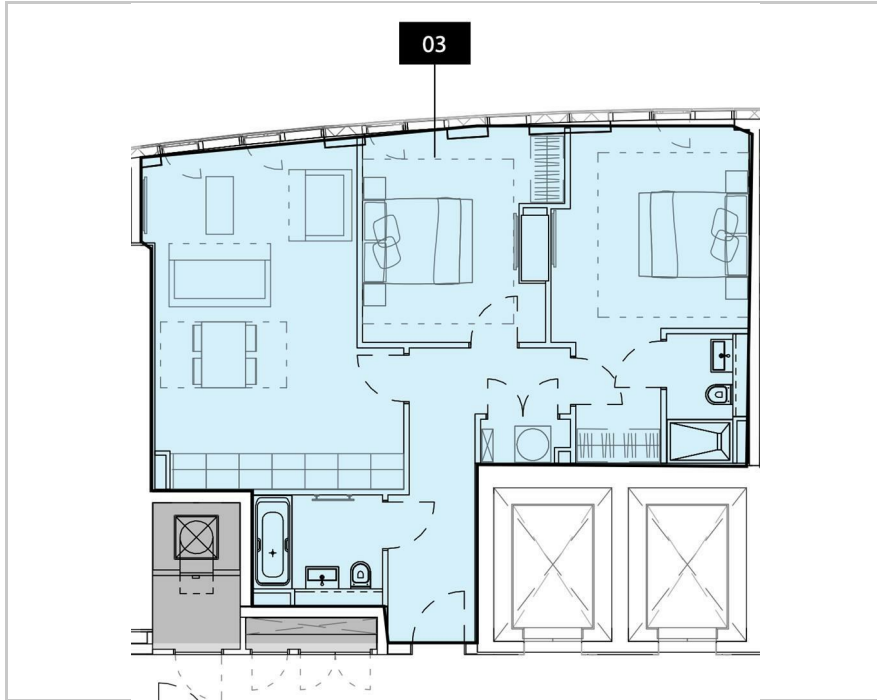


1



B

Floor Plan



Accommodation

- Two Double Bedrooms, Two Bathrooms
- Includes Parking (With EV Charger)
- High Specification Throughout
- Furnished To A High Standard
- Available 9th June 2026
- EPC Rating B
- 24 Hour Concierge
- Residents Gym, Infrared Sauna, Co-Working Spaces
- Residents Garden Space
- 42nd Floor



Area Map

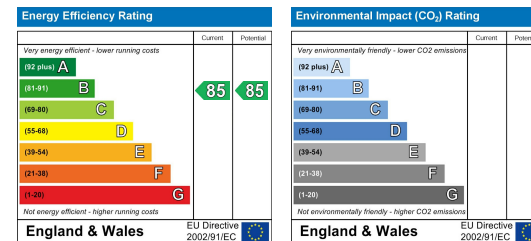


Viewing

Please contact our Reside Manchester Office on 0161 837 2840 if you wish to arrange a viewing appointment for this property or require further information.



Energy Efficiency Graph



These particulars, whilst believed to be accurate are set out as a general outline only for guidance and do not constitute any part of an offer or contract. Intending purchasers should not rely on them as statements of representation of fact, but must satisfy themselves by inspection or otherwise as to their accuracy. No person in this firm's employment has the authority to make or give any representation or warranty in respect of the property.

Upper Ground, 4 Jordan Street, Manchester, Greater Manchester, M15 4PY

Tel: 0161 837 2840 Email: info@residemanchester.com www.reside-property.com