



7 Davies Drive, St. Annes Park
£299,950





7 Davies Drive

St. Annes Park, Bristol

Council Tax band: B

Tenure: Freehold

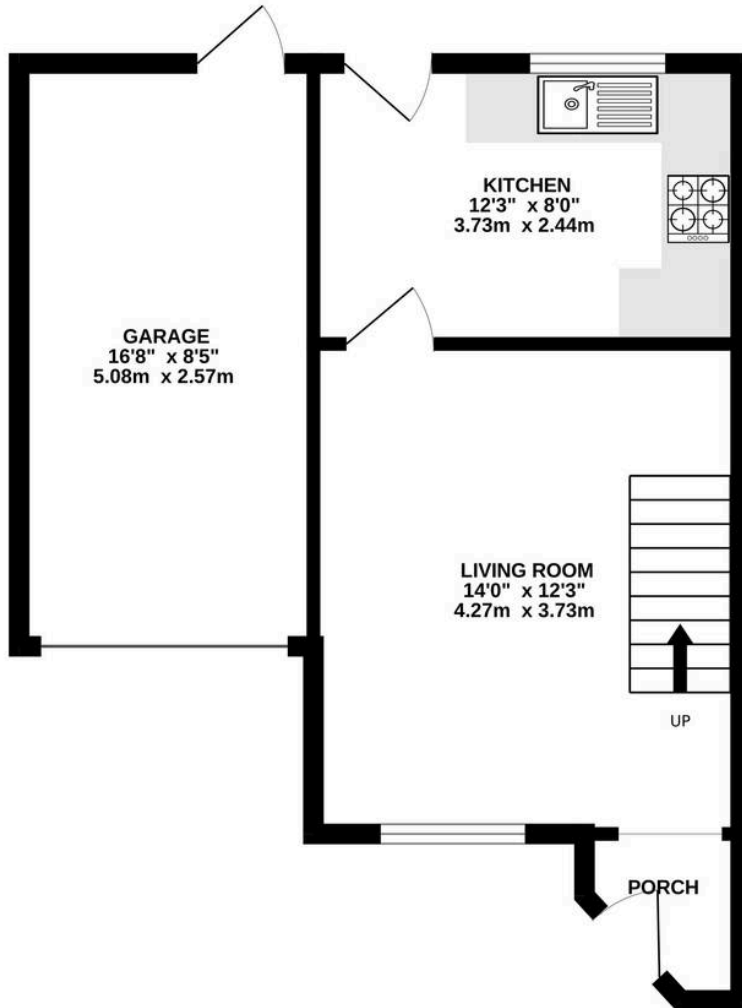
EPC Energy Efficiency Rating: C

EPC Environmental Impact Rating:

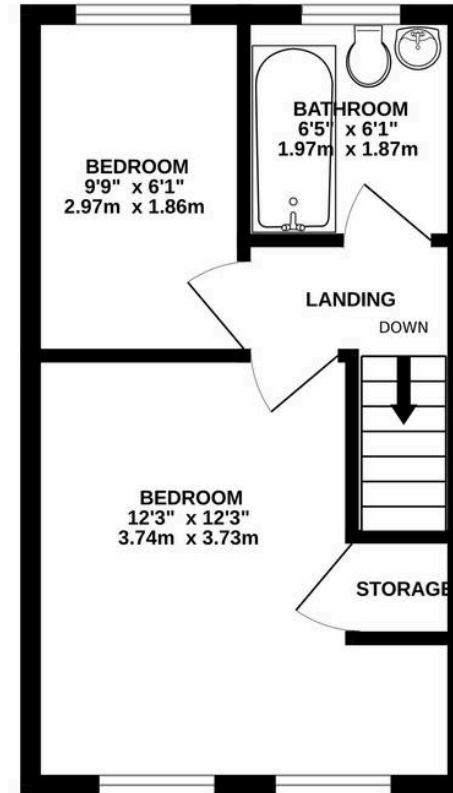
- Two bedroom modern terrace
- Off street parking plus garage on the side
- Contemporary bathroom
- Ideal first time purchase
- Generous garden with courtesy door to garage
- Well presented accommodation



GROUND FLOOR
427 sq.ft. (39.6 sq.m.) approx.



1ST FLOOR
269 sq.ft. (25.0 sq.m.) approx.



TOTAL FLOOR AREA : 696 sq.ft. (64.7 sq.m.) approx.

Whilst every attempt has been made to ensure the accuracy of the floorplan contained here, measurements of doors, windows, rooms and any other items are approximate and no responsibility is taken for any error, omission or mis-statement. This plan is for illustrative purposes only and should be used as such by any prospective purchaser. The services, systems and appliances shown have not been tested and no guarantee as to their operability or efficiency can be given.

Made with Metropix ©2026