

15-17 Eastgate Street, Bury St. Edmunds, Suffolk, IP33 1XX  
Tel: 01284 760770  
bury@shiresestateagents.co.uk  
www.shiresresidential.com

**shires**

Estate & Letting Agents



## St. Johns Place, Bury St. Edmunds, Suffolk, IP33 1SW

**Rent - £825 PCM**

**Deposit - £951**

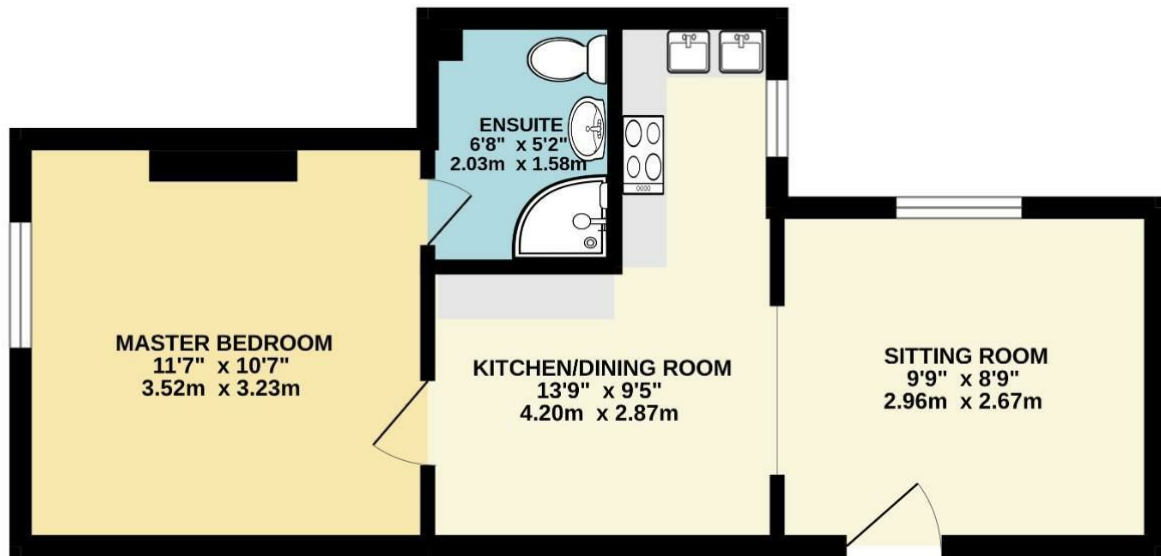
Shires Residential are delighted to offer to the market for let this one bedroom first floor maisonette located just to the north of the town centre with all its facilities and amenities. The accommodation consists of open plan Sitting Room & Kitchen/Dining Room with Bedroom and Shower Room. The property is located in a permit parking area. The property is ready now on an unfurnished basis. Sorry no pets-available late Jan 2026

- ONE BED FIRST FLOOR MASONETTE
- ONE DOUBLE BEDROOM
- CLOSE TO TRAIN STATION
- EN SUITE
- PERMIT PARKING
- CLOSE TO TOWN CENTRE
- ELECTRIC HEATING & ENERGY RATING - C
- APPROXIMATE SIZE - 355 SQ FT
- SORRY NO PETS / COUNCIL TAX BAND A
- AVAILABLE LATE JAN



Council Tax Band: A - EPC Rating: D 68

GROUND FLOOR  
326 sq.ft. (30.3 sq.m.) approx.



TOTAL FLOOR AREA : 326 sq.ft. (30.3 sq.m.) approx.

Whilst every attempt has been made to ensure the accuracy of the floorplan contained here, measurements of doors, windows, rooms and any other items are approximate and no responsibility is taken for any error, omission or mis-statement. This plan is for illustrative purposes only and should be used as such by any prospective purchaser. The services, systems and appliances shown have not been tested and no guarantee as to their operability or efficiency can be given.  
Made with Metropix ©2024

