



## Grange Road, W4 £450,000

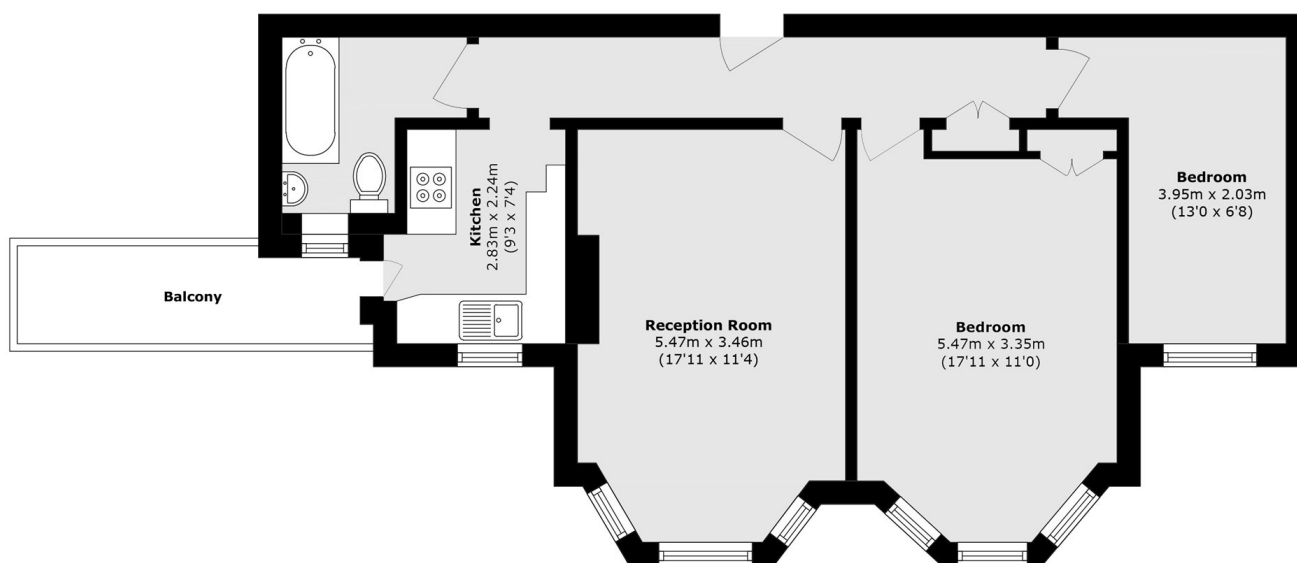
A two double bedroom, top floor purpose built apartment on this well positioned, tree-line road. With bay windows, shared balcony, share of freehold.

Located on Grange Road, within walking distance of Gunnersbury tube station (District line) as well as the extensive range of cafés, restaurants, shops and bars along Chiswick High Road.

### Features

- Top Floor
- Two Double Bedrooms
- Purpose Built
- Share Of Freehold
- Shared Balcony
- Close To Transport

# Grange Road, London, W4



Total area (approx.): 64.4 sq. m (693.2 sq. ft)  
Balcony area (approx.): 5.6 sq. m (60.2 sq. ft)