



Chapter Chambers, SW1P

£425,000

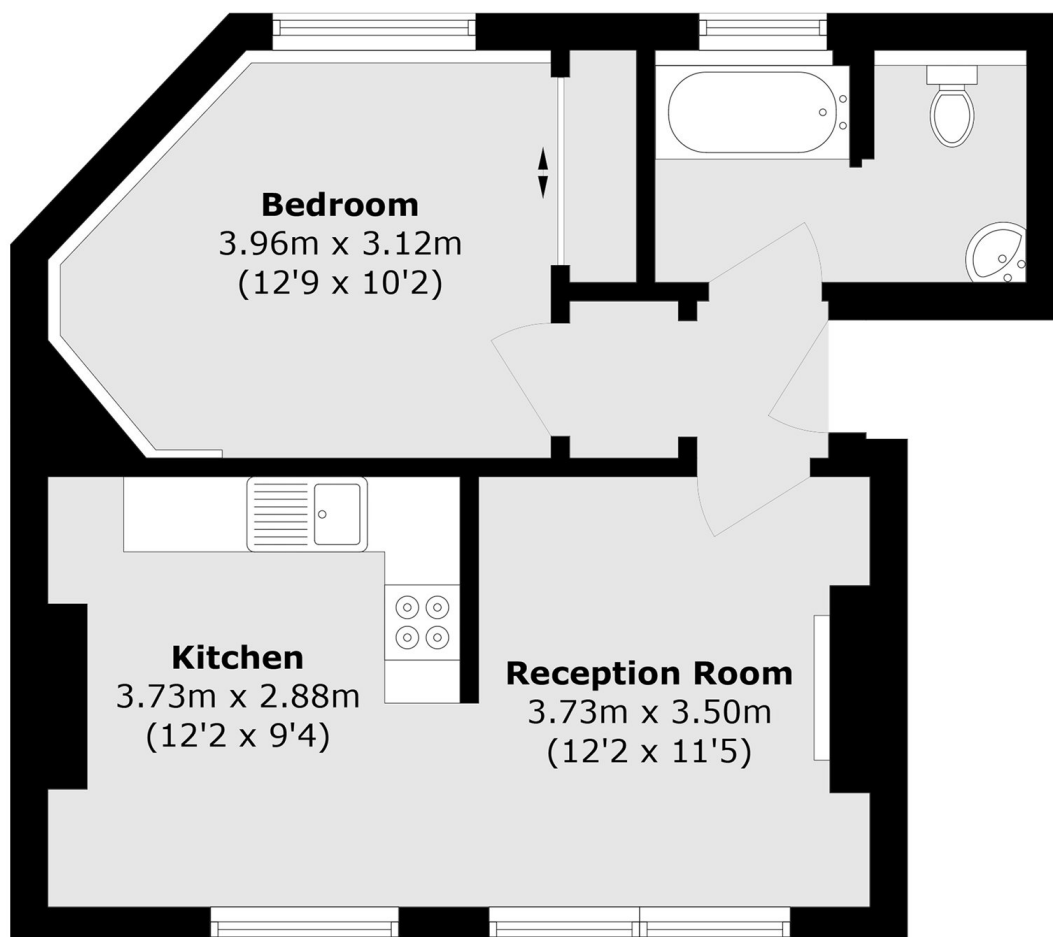
This spacious one bedroom flat is excellently located in the heart of Westminster and would make a wonderful home. The property comprises of an open plan kitchen and living space, one double bedroom with ample storage and a large bathroom. This flat is on the first floor and is flooded with natural light.

Chapter Street is perfectly located, a short walk from the river as well as both Pimlico and Victoria stations. With the supermarkets and cafés of Warwick way across the road, you have everything you need nearby.

Features

- One Bedroom
- One Bathroom
- First Floor
- Open Plan
- Plenty of Storage
- Westminster

Chapter Chambers, London, SW1P



Total area (approx.): 45.8 sq. m (492.9 sq. ft)

First Floor