



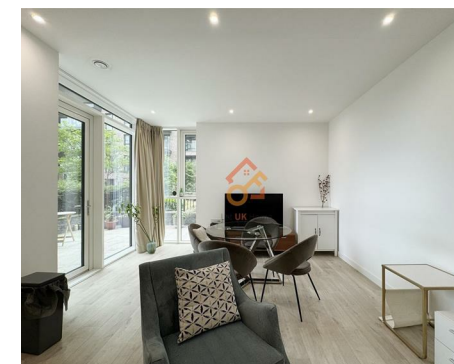
Let **UK** Home

1 Bedrooms

Flat

Located in London

£2,600 Per Month



info@letukhome.co.uk

<https://www.letukhome.co.uk/>

01795 358 886



Coster Avenue London

N4 2WQ



Let UK Home are excited to offer this spectacular one bedroom apartment in the heart of Hartington Court part of the Woodberry Down.

The flat comprises a spacious open kitchen with a stylishly attached dining area, a magnificent living room, one bright bedroom and one modern bathroom.

The community has various chain supermarkets, restaurants, cafes, gyms, kindergartens, etc. It also has activity centers, libraries, medical centers, community courtyards, etc., providing residents with various cultural, artistic, cooking, sports and other activities.

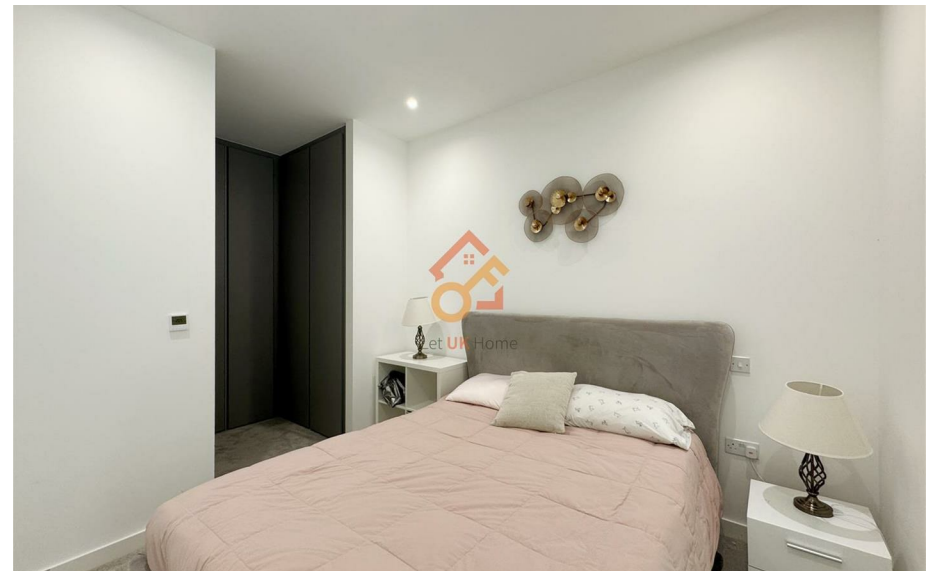
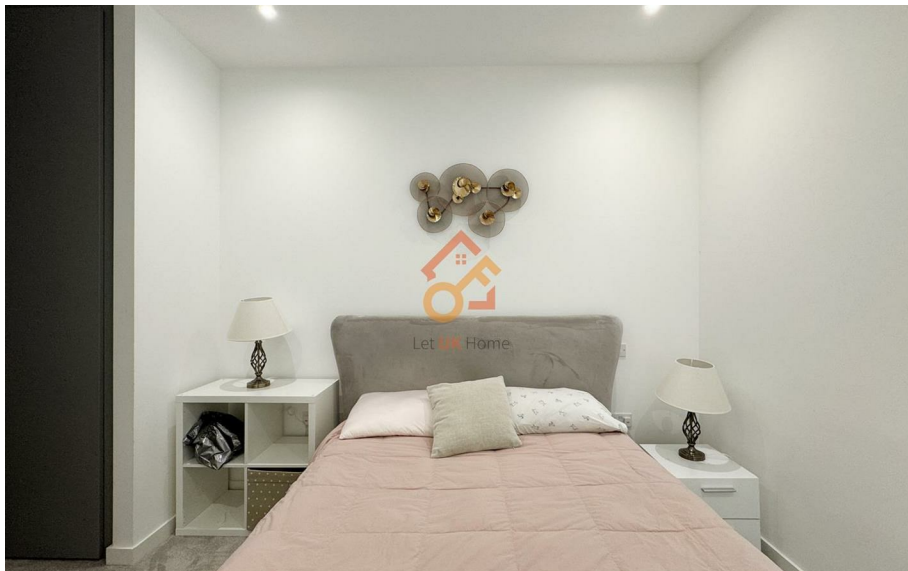
Manor House underground station and Stamford Hi overground railway station are within walking distance of the apartment, connecting the three important rail transit lines of Piccadilly Line, Victoria Line and Overground, and Finsbury Park station(underground & train) is also within walking distance. Residents can quickly reach central London, the City of London, Central Saint Martins College of Art and Design, University of the Arts London, London School of Economics, University College London, Imperial College London, and so on.

There are two large shopping centers nearby, Wood Green Shopping City and Brent Cross Shopping Centre, offering various brands, dining, entertainment, and more. There are also several parks and green spaces around, such as Finsbury Park, Clissold Park, and Abney Park, providing leisure, sports, picnics, and more.

Coster Avenue London

£2,600 Per Month

- Ground Floor
- 24h Security
- Swimming Pool
- Residents Lounge
- Concierge Service
- The Gym
- The Spa
- EPC Rating: C





BG.08 / 1 BED	821 sq ft	76.2 sqm
Apartment Area	558 sq ft	51.8 sqm
External Area	263 sq ft	24.4 sqm
Kitchen/Living Area	18'4" x 15'5"	5.6 x 4.7
Bedroom	14'9" x 9'6"	4.5 x 2.9
Terrace	23'11" x 16'5"	7.3 x 5.0



Let **UK** Home

3F 2 Eastbourne Terrace
Paddington
London
W2 6LG

01795 358 886

info@letukhome.co.uk

Council Tax Band: C

Local Authority:

Agents Note: Whilst every care has been taken to prepare these particulars, they are for guidance purposes only. All measurements are approximate and are for general guidance purposes only and whilst every care has been taken to ensure their accuracy, they should not be relied upon and potential buyers/tenants are advised to recheck the measurements.

Energy Efficiency Rating		Current	Potential
Very energy efficient - lower running costs			
(92 plus) A			
(81-91) B			
(69-80) C		80	80
(55-68) D			
(39-54) E			
(21-38) F			
(1-20) G			
Not energy efficient - higher running costs			
England & Wales	EU Directive 2002/91/EC		

<https://www.letukhome.co.uk/>