



[www.jeffreygross.co.uk](http://www.jeffreygross.co.uk)

CARDIFF

VALE

CAERPHILLY

BRISTOL

*Radyr Place*

GABALFA

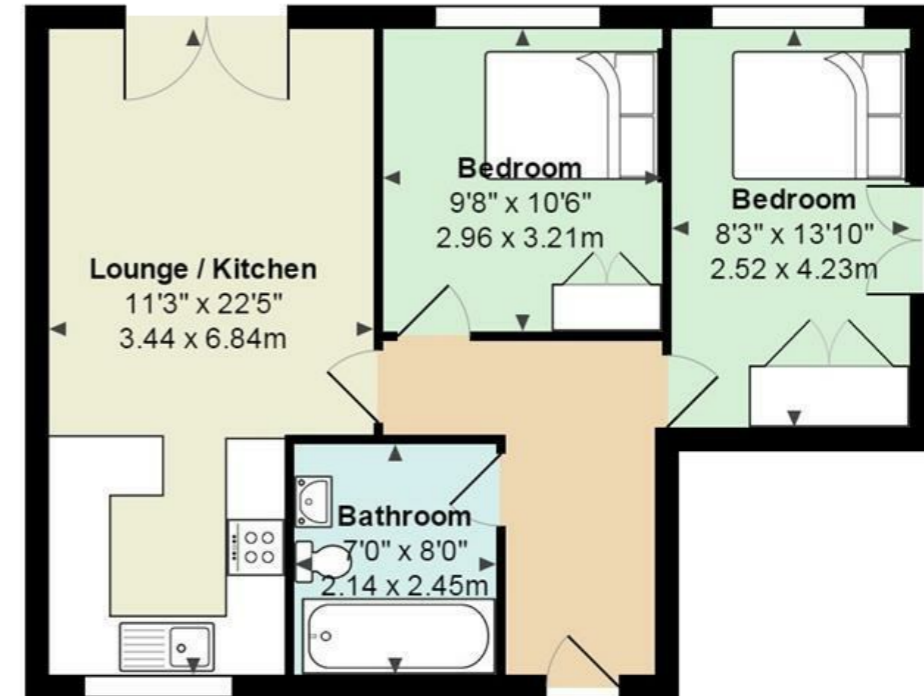


Comments by Ms Cody Byrne



**Property Specialist**  
Ms Cody Byrne  
Administrator  
[cody@jeffreygross.co.uk](mailto:cody@jeffreygross.co.uk)

## Radyr Place, Gabalfa.



Total Area: 593 ft<sup>2</sup> ... 55.1 m<sup>2</sup>

All measurements are approximate and for display purposes only

*Perfectly located for the University Hospital of Wales and close to excellent transport links is this modern-build development. Two double bedrooms with modern and stylish bathroom suite. Security entry and secure, allocated parking.*

Comments by the Homeowner





# Radyr Place

*Gabalfa, Cardiff, CF14 3HP*

PCM

**£1,000 PCM**



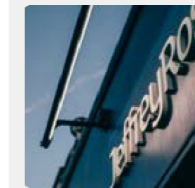
2 Bedroom(s)



1 Bathroom(s)



sq ft



Contact our

***Llanishen Branch***

02920 499680

Jeffrey Ross are pleased to offer this two bedroom apartment situated in this purpose built development, within walking distance to the University Hospital, local shops and access to the A48. The accommodation briefly comprises of two double bedrooms, modern fully fitted kitchen and bathroom. The property further benefits secure off-road parking and shared garden. The property is available furnished. Available 25th April 2026. EPC Rating: E. Council Tax Band: C. Managed By Jeffrey Ross.

A holding fee of one weeks' rent will be payable to secure the dwelling. This will be deducted from the final balance payable upon moving into the dwelling, subject to a successful application. Jeffrey Ross Limited reserves the right to retain this payment should the applicant have provided false or misleading information at the time of applying for the dwelling or failed to take reasonable steps to enter into the Standard Occupation Contract.





CARDIFF

VALE

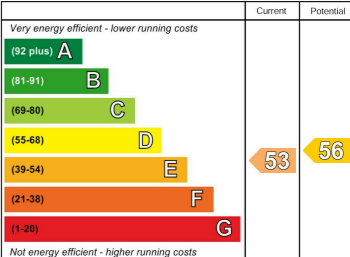
CAERPHILLY

BRISTOL

[www.jeffreygross.co.uk](http://www.jeffreygross.co.uk)



Energy Efficiency Rating



England & Wales EU Directive 2002/91/EC

