



Newton Road, NW2

£600 Per week

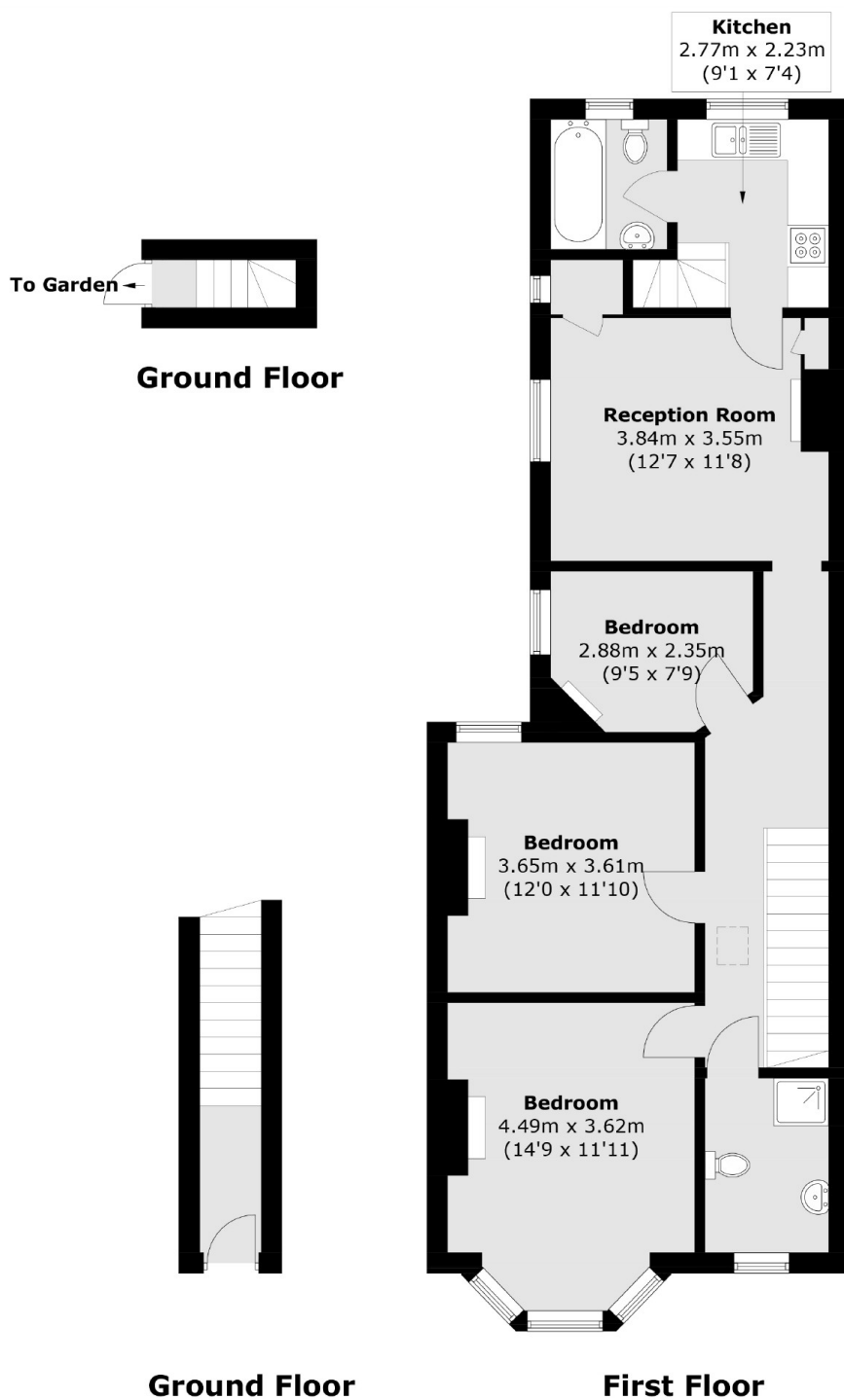
This newly refurbished three bedroom two bathroom first floor maisonette is ideally situated in the heart of Cricklewood. The property has a spacious reception, a separate kitchen, good storage space and direct access to a private garden.

Newton Road is ideally situated close to many local amenities, deli's, shops and cafés. Gladstone Park is moments away and you also have good transport links to the city and easy motorway access. Willesden Green station and Cricklewood Thameslink are also near.

Features

- Three Bedrooms
- Two Bathrooms
- Private Garden
- Spacious Reception
- Separate Kitchen
- Ideally Situated

Newton Road, London, NW2



Total area (approx.): 86 sq. m (925.6 sq. ft)

Dexters

Cricklewood
28-30 Cricklewood Broadway
London
NW2 3HD
Lettings
020 7794 1730

Energy Rating: . We aim to make our particulars both accurate and reliable. However they are not guaranteed; nor do they form part of an offer or contract. If you require clarification on any points then please contact us, especially if you're traveling some distance to view. Please note that appliances and heating systems have not been tested and therefore no warranties can be given as to their good working order.

 **RICS** | Regulated
Estate Agent
and Letting Agent

dexters.co.uk