

# BRUNTON

---

## RESIDENTIAL



**RENWICK WALK, MORPETH, NE61**

**Offers Over £140,000**



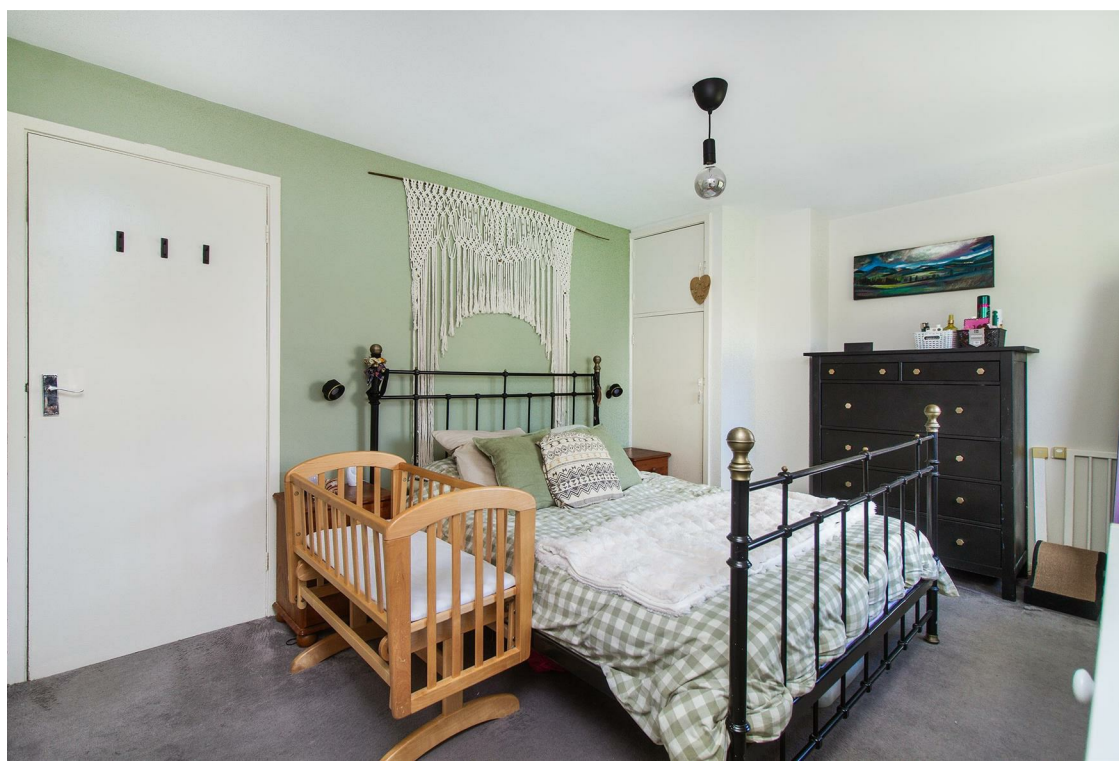
# BRUNTON

---

## RESIDENTIAL









# BRUNTON

---

## RESIDENTIAL







# BRUNTON

---

## RESIDENTIAL

### IDEAL FIRST TIME BUY - POPULAR AREA - MODERN KITCHEN

Well-Proportioned Two-Bedroom Terraced Home positioned on Renwick Walk in Morpeth

This terraced property offers a lounge diner, Modern kitchen, and two good-sized bedrooms with a family bathroom. Externally, the home benefits from a outhouse/utility, paved rear yard enclosed for privacy, as well as a front town garden.

Located in a popular residential area of Morpeth, the property is within easy reach of local schools, shops, and green spaces, offering a convenient lifestyle in a well-connected and community-focused setting.



# BRUNTON

---

## RESIDENTIAL





# BRUNTON

---

## RESIDENTIAL

The property is walkway fronted, with a pathway leading through the enclosed front garden to the front entrance. Access is via a double-glazed front door with side panel leading into a hallway with laminate flooring, stairs to the first floor, and a large under-stair storage cupboard with a cloaks area.

To the right is a lounge-diner with windows to both the front and rear, freshly fitted carpets and a feature electric fire set within a marble-effect surround. From here, access is provided to the refitted modern kitchen, which includes a range of wall and base units with quartz sparkle work surfaces, integral oven, hob, extractor, fridge, freezer, and washing machine. A door provides access to the rear garden.

On the first floor, the landing provides loft access and leads to two generously sized double bedrooms. A recently refitted family bathroom includes a suite with bath and mains-powered shower over. Externally, the rear yard is predominantly paved, providing off-street parking, and includes a brick-built outbuilding for storage with a patio area to the rear.



# BRUNTON

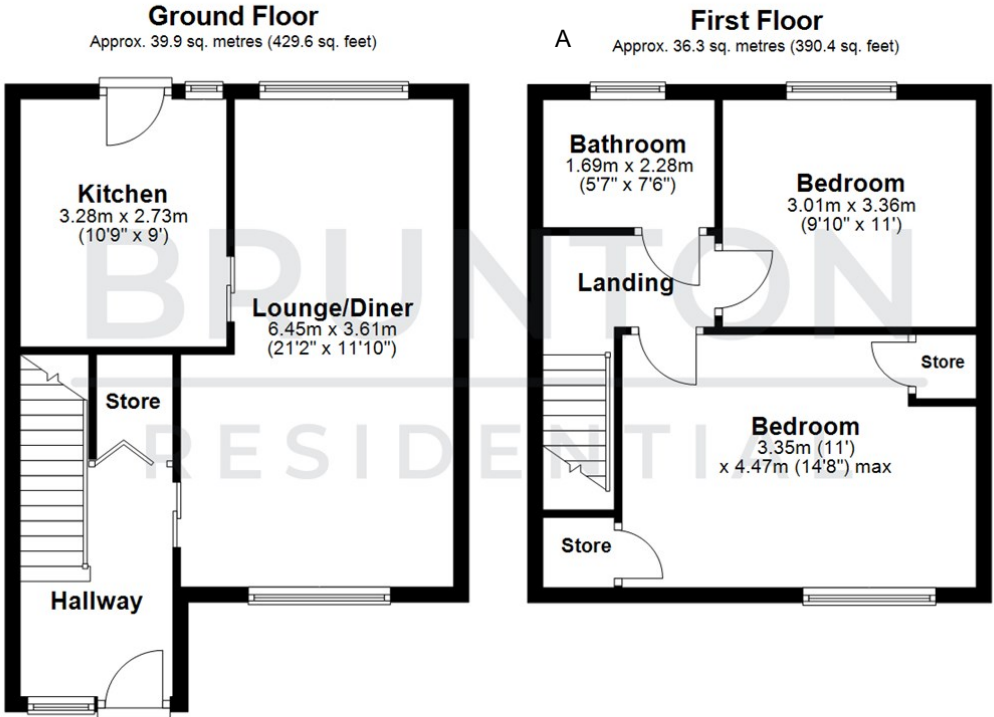
## RESIDENTIAL

TENURE : Freehold

LOCAL AUTHORITY : Northumberland CC

COUNCIL TAX BAND : A

EPC RATING : D



All measurements are approximate and are for illustration only.  
Plan produced using PlanUp.

