



Albion Road, TW2

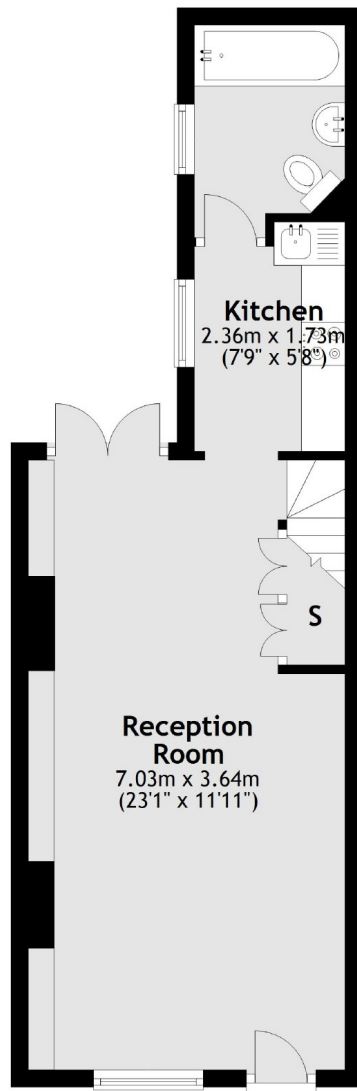
£2,495 PCM

Situated on the much sought after Albion Road, just over 100 yards from Twickenham Green, stands this perfect example of one of Twickenham's period cottages. The property offers two double bedrooms, ample storage, period features and a beautiful private garden. Ideal for a couple or small family.

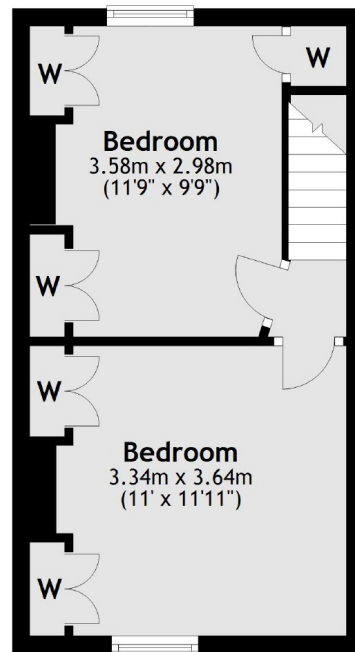
Albion Road is a highly desirable road located close to Twickenham Green, Twickenham town centre and Twickenham mainline station with its fast trains to Waterloo.

- Two Double Bedrooms • Period Features • Private Garden •
- Sought After Road • Ample Storage • Near Twickenham Green •

Ground Floor



First Floor



Total area: approx. 59.9 sq. metres (644.8 sq. feet)

Snellers Twickenham Lettings
64-66 Heath Road
Twickenham
TW1 4BX
020 8892 5678
twickenhamlettings@snellers.co.uk

Energy Rating: E We aim to make our particulars both accurate and reliable. However they are not guaranteed; nor do they form part of an offer or contract. If you require clarification on any points then please contact us, especially if you're traveling some distance to view. Please note that appliances and heating systems have not been tested and therefore no warranties can be given as to their good working order