

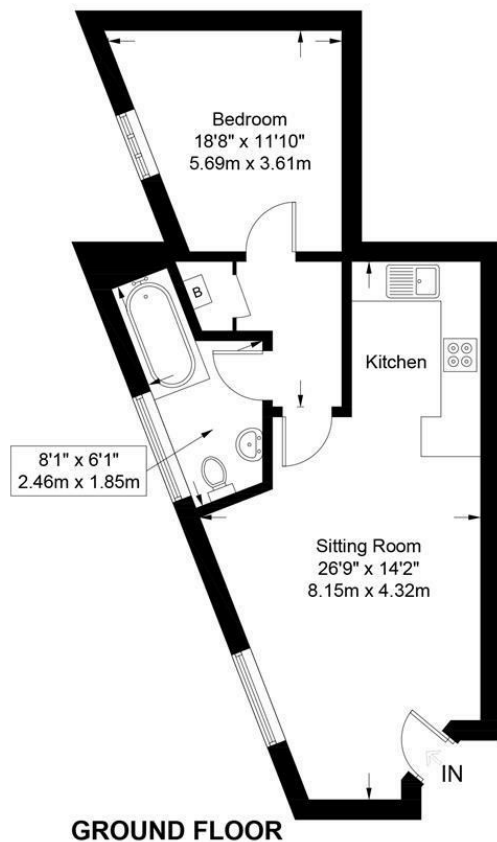
# Flat 2, 22 Oxford Street

Gloucester, Gloucestershire GL1 3EQ

readmaurice 



**A CHARMING GROUND FLOOR FLAT THAT HAS NEWLY BEEN CARPETED AND CONVENIENTLY LOCATED CLOSE TO THE CITY CENTRE AND HOSPITAL AND OFFERS GOOD ACCOMMODATION FOR SINGLE OCCUPANCY.**



Approximate Gross Internal Area = 466 sq ft / 43.3 sq m

Illustration for identification purposes only, measurements are approximate and are not to scale.  
Please check all details before making any decisions reliant upon them.  
Copyright Read Maurice. (ID1299573)

**ACCOMMODATION:**

Open plan sitting room & kitchen, 1 bedroom and bathroom, inner hallway

**PARKING:**

On street with parking permit scheme in operation

**ADDITIONAL:**

Gas central heating  
Single glazed windows  
Unfurnished

**INCLUDED:**

Oven  
Hob  
Plumbing for washing machine

**TERM**

No pets. No smokers.

**VIEWING AND SHOWING TIMES:**

Read Maurice show our rental property during weekdays only. No application may be made without a physical viewing of the property. For certain properties block viewings will be offered and you are advised to attend at the earliest opportunity if this property is of interest to you.

**GENERAL:**

Mains services are believed to be connected.

**General**

**Local Authority:** Gloucester City Council

**Council Tax:** A

**EPC:** Band C

**Rating:** 70

**readmaurice** 

48 Andover Road, Cheltenham, GL50 2TL

Tel: 01242 241122

Email: [post@readmaurice.co.uk](mailto:post@readmaurice.co.uk)

[www.readmaurice.co.uk](http://www.readmaurice.co.uk)

**Flat 2, 22 Oxford Street, Gloucester Gloucestershire GL1 3EQ**

These particulars, whilst believed to be accurate are set out as a general outline only for guidance and do not constitute any part of an offer or contract. Intending purchasers should not rely on them as statements or representation of fact, but must satisfy themselves by inspection or otherwise as to their accuracy. We have not carried out a detailed survey nor tested the services, appliances and specific fittings. Room sizes should not be relied upon for carpets and furnishings. The measurements given are approximate. No person in this firm's employment has the authority to make or give any representation or warranty in respect of the property. Purchasers should not rely on room labels they are chosen by the floor planner and may not have the deemed planning consent for such use.