



Symonds
& Sampson

East Street

Corfe Castle, Dorset.

172

East Street
Corfe Castle
Wareham
Dorset BH20 5EH



- Three bedroom end of terrace home
- Two reception rooms and conservatory
 - West facing garden
 - Gas central heating
 - Allocated parking
- Situated on the outskirts of Corfe Castle



Guide Price **£425,000**

Freehold

Wimborne Sales
01202 843190
wimborne@symondsandsampson.co.uk



THE PROPERTY

Situated on the outskirts of Corfe Castle, the property is built of attractive Purbeck stone elevations beneath a tiled roof. While it would benefit from some cosmetic updating, it retains a number of appealing features, including a charming cast iron fireplace in one of the bedrooms.

ACCOMMODATION

The accommodation is laid out over two floors. On the ground floor there is an entrance, bathroom, sitting room, kitchen, dining room and conservatory with store. Three bedrooms on the first floor.

OUTSIDE

The property occupies an end of terrace plot with front and rear gardens. The front garden is laid to lawn with a birch tree and a pedestrian right of access for the neighbours of 170. The rear garden is enclosed by wall and fencing, with agate leading to the parking area. It is laid to patio and lawn and enjoys a west-facing aspect.

SITUATION

Corfe Castle is one of the UK's most recognisable and historic villages and is situated on the Isle of Purbeck. The village is easily accessible by private and public transport and has a Swanage Railway Station. Amenities include a selection of village inns, a bakery, tea rooms and a cafe. Wareham (5 miles) and Swanage (6 miles) offer a further range of shopping facilities including a Sainsburys supermarket and a mainline station to London Waterloo. The coast is within easy reach with sandy beaches at Studland and Swanage and the surrounding area provides excellent walking and cycling.

DIRECTIONS

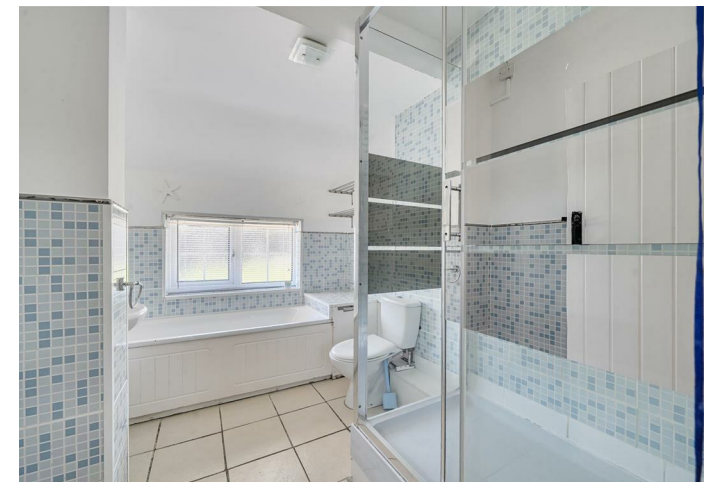
What3Words///gratuity.reckon.snooping

SERVICES

Mains electricity, water, drainage and gas. Gas central heating. Superfast broadband available, there is mobile coverage in the area, please refer to Ofcoms website for further information.

MATERIAL INFORMATION

Conservation area, situated just outside the SSSI. There is a pedestrian right of way over the front garden for the neighbours of 170 East Street to access their front door and garden.

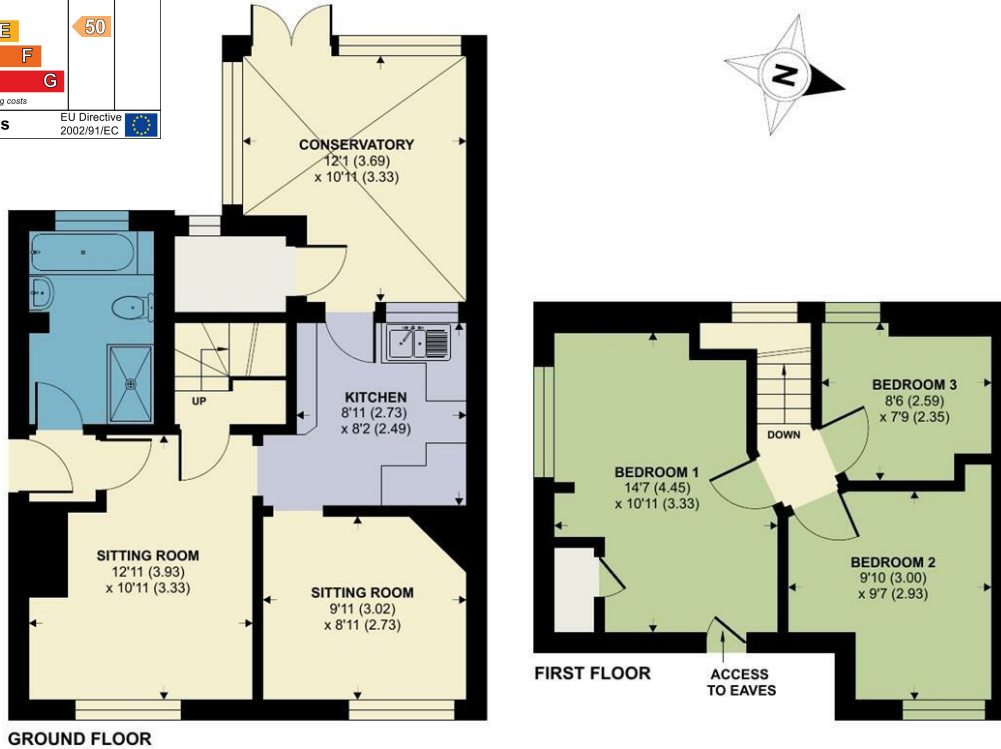


Energy Efficiency Rating		Current	Potential
Very energy efficient - lower running costs			
(92 plus) A			
(81-91) B			87
(69-80) C			
(55-68) D			
(39-54) E		50	
(21-38) F			
(1-20) G			
Not energy efficient - higher running costs			
England & Wales		EU Directive 2002/91/EC	

East Street, Corfe Castle, Wareham

Approximate Area = 921 sq ft / 85.5 sq m

For identification only - Not to scale



GROUND FLOOR

FIRST FLOOR

ACCESS TO EAVES

Floor plan produced in accordance with RICS Property Measurement 2nd Edition, Incorporating International Property Measurement Standards (IPMS2 Residential). © nichecom 2026. Produced for Symonds & Sampson. REF: 1448489



WIM/SH/APR26



01202 843190

wimborne@symondsandsampson.co.uk
Symonds & Sampson LLP
5, West Street,
Wimborne, Dorset BH21 1JN



Important Notice: Symonds & Sampson LLP and their clients give notice that they have no authority to make or give any representations or warranties regarding the property. These particulars do not form part of any offer or contract and must not be relied upon as statements of fact. Some descriptions and images may have been AI-assisted; while reviewed for accuracy, interested parties should verify key details through inspection or by contacting our agents. All measurements and distances are approximate. Text, photographs, and plans are for guidance only and may not be comprehensive. It should not be assumed that the property has all necessary planning or regulatory consents, and no services, equipment, or facilities have been tested. No investigations have been made into pollution or contamination; purchasers must make their own enquiries. The property is sold subject to all existing wayleaves, easements, and rights of way (public or private), whether mentioned or not. Vendors are not required to define such rights.