



Woodbridge Road, Ipswich, IP4 4AX

welcome to

Woodbridge Road, Ipswich

This attractive, bay fronted, mid-terraced home benefits from two bedrooms, a lounge/diner, a beautifully presented kitchen, a ground floor cloakroom, a 1st floor bathroom, a private rear garden and NO ONWARD CHAIN!

Entrance Hall

Carpet flooring, one radiator and the staircase.

Lounge/Diner

Double glazed bay window to the front, double glazed window to the rear, two radiators, TV point and an understairs storage cupboard.

Kitchen

Contemporary kitchen with eye and base level units in grey with brass handles and wooden worktop surfaces, a stainless steel sink plus drainer and chrome mixer tap, an integrated oven with induction hob and extractor hood, space for a fridge/freezer, washing machine and dishwasher, tiled splashback, Victorian style tiled effect flooring and double glazed window to the side.

Inner Hall

A door to the garden, tiled effect flooring and storage cupboards.

Cloakroom

Low level WC, one radiator, tiled effect flooring, one radiator and double glazed window to the side.

First Floor Landing

Loft hatch, carpet flooring and one radiator.

Master Bedroom

Two double glazed windows to the front, carpet flooring and one radiator.

Bedroom Two

Double glazed window to the rear, carpet flooring and one radiator.

Bathroom

Low level WC, pedestal wash hand basin, a bath, a shower with glass enclosure and panelled splashback, part tiled walls, one radiator, tiled effect flooring, extractor fan, shaver point and an airing cupboard.

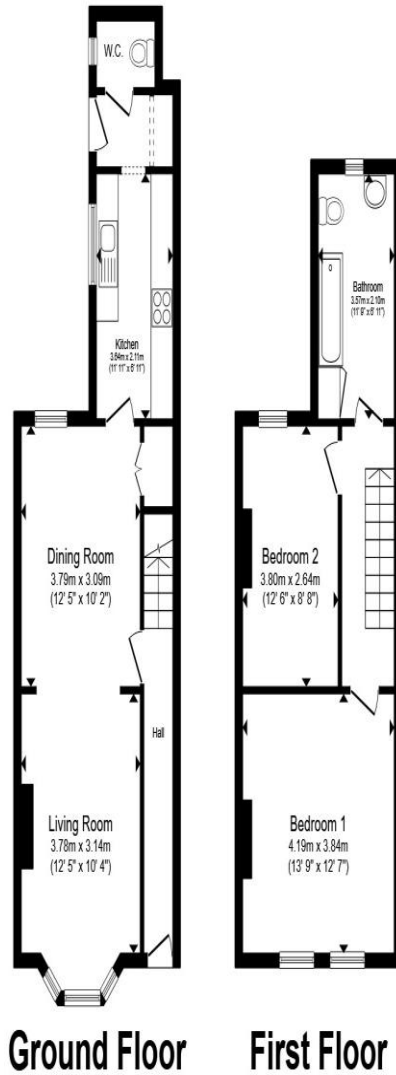
Outside:

Front Garden

A walled border and a pathway to the front door.

Rear Garden

A grassed area, a rear gate, a fully enclosed border, a hard standing area and an outside tap.



Total floor area 84.9 m² (914 sq.ft.) approx

This floor plan is for illustrative purposes only. It is not drawn to scale. Any measurements, floor areas (including any total floor area), openings and orientation are approximate. No details are guaranteed, they cannot be relied upon for any purpose and they do not form part of any agreement. No liability is taken for any error, omission or misstatement. A party must rely upon its own inspection(s). Powered by www.propertybox.io



welcome to
Woodbridge Road,
Ipswich

- No onward chain
- Two bedrooms
- Beautifully presented kitchen
- Ground floor cloakroom & 1st floor bathroom
- Private rear garden

Tenure: Freehold EPC Rating: D
Council Tax Band: B

£200,000



view this property online williamhbrown.co.uk/Property/IPS119668



Property Ref:
IPS119668 - 0004

1. MONEY LAUNDERING REGULATIONS Intending purchasers will be asked to produce identification documentation at a later stage and we would ask for your co-operation in order that there is no delay in agreeing the sale. 2. These particulars do not constitute part or all of an offer or contract. 3. The measurements indicated are supplied for guidance only and as such must be considered incorrect. Potential buyers are advised to recheck measurements before committing to any expense. 4. We have not tested any apparatus, equipment, fixtures or services and it is in the buyers interest to check the working condition of any appliances. 5. Where an EPC, or a Home Report (Scotland only) is held for this property, it is available for inspection at the branch by appointment. If you require a printed version of a Home Report, you will need to pay a reasonable production charge reflecting printing and other costs. 6. We are not able to offer an opinion either written or verbal on the content of these reports and this must be obtained from your legal representative. 7. Whilst we take care in preparing these reports, a buyer should ensure that his/her legal representative confirms as soon as possible all matters relating to title including the extent and boundaries of the property and other important matters before exchange of contracts.

William H Brown is a trading name of Sequence (UK) Limited which is registered in England and Wales under company number 4268443, Registered Office is Cumbria House, 16-20 Hockliffe Street, Leighton Buzzard, Bedfordshire, LU7 1GN. VAT Registration Number is 500 2481 05.



william h brown



01473 226101



ipswich@williamhbrown.co.uk



16-18 Wolsey House, Princes Street, IPSWICH,
Suffolk, IP1 1QT



williamhbrown.co.uk