



## Portsmouth Road, KT6

£535,000

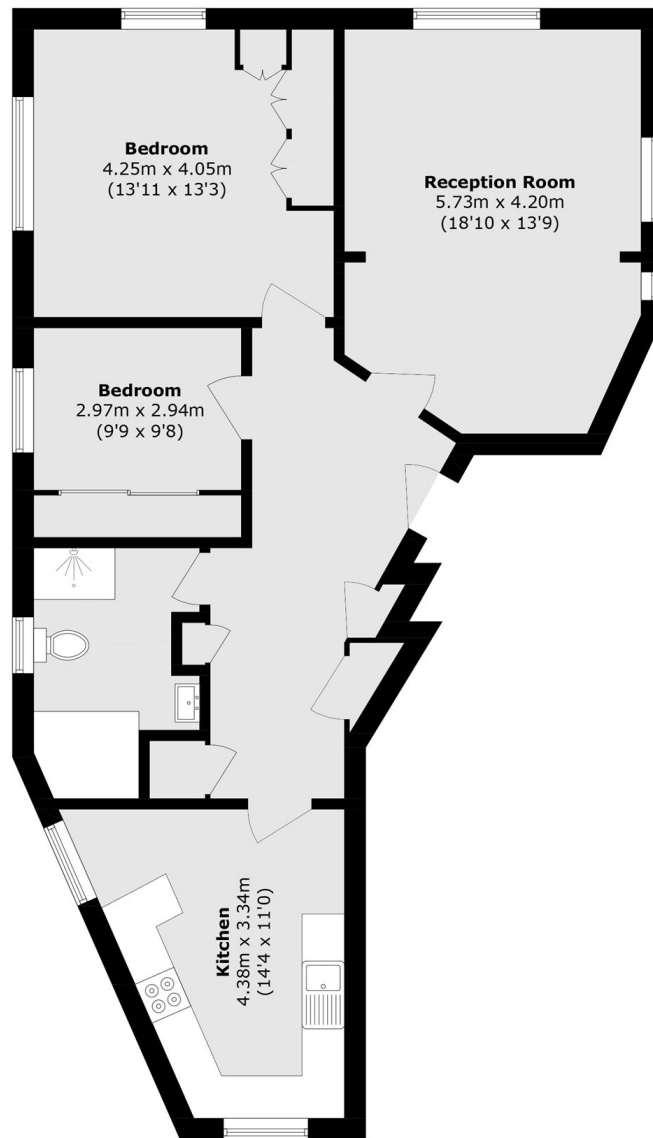
A rarely available top floor two bedroom mansion block apartment with spectacular uninterrupted views up and down the River Thames to Kingston bridge and across to Hampton Court Palace. There is a spacious dual aspect reception room, good size kitchen, two double bedrooms and a modern bathroom. Benefits include a share of the freehold, no onward chain as well as being well presented throughout.

Situated within half a mile of Surbiton high street and mainline station in an area well served by local bus routes and close to the River Thames, local restaurants, bistros and bars.

### Features

- Top Floor Apartment
- Two Bedrooms
- Dual Aspect Reception
- River Views
- Share of Freehold
- No Chain

# Portsmouth Road, Surbiton, KT6



Total area (approx.): 93.6 sq. m (1007.5 sq. ft)