



5 Mottram Close,

£250,000

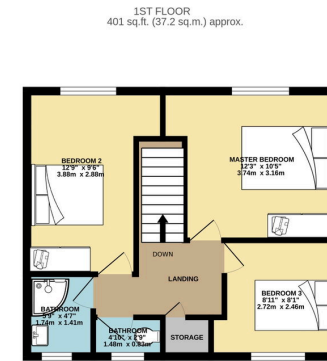
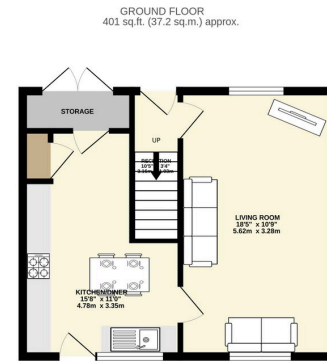
🛏️ 3 🚿 1 🚗 2

- Three Double Bedroom Mid Mews
- Offered For Sale with No Chain
- Low Maintenance Rear Garden
- Shower Room with Separate W.C
- Popular Location Close to Cheadle
- Ready to Move Into Accommodation
- Stylish Kitchen Diner
- Tenure - Freehold / EPC - D / Council Tax Band - B

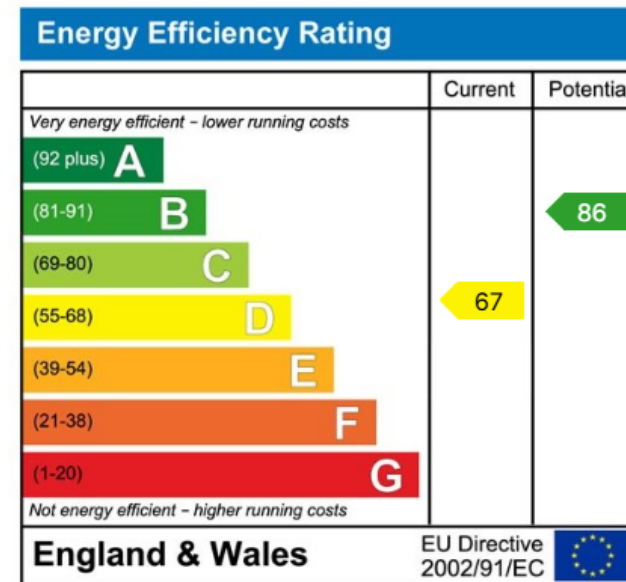


A delightful three-bedroom mid-mews property (802 sq ft) arranged over two floors, located within easy reach of Cheadle Village and close to local amenities, schools, Abney Hall Park, and the Lady Brook Valley Cycle Path. Inside, the home features an entrance hallway leading to a spacious living room and a kitchen diner with integrated appliances, plus access to a useful external store room that also provides additional secure storage. Upstairs, there are three well-proportioned bedrooms, a storage cupboard on the landing, loft access, a contemporary shower room, and a separate WC. Outside, the property has a lawned frontage, a low-maintenance rear garden with a patio area ideal for entertaining, and parking options including on-street parking and a nearby residents' car park with rentable spaces.





TOTAL FLOOR AREA: 802 sq.ft. (74.5 sq.m.) approx.
Whilst every attempt has been made to ensure the accuracy of the floorplans contained here, measurements of doors, windows, rooms and any other items are approximate and no responsibility is taken for any error, omission or mis-statement. This plan is for illustrative purposes only and should be used as such by any prospective purchaser. The services, systems and appliances shown here are not bonded and no guarantee as to their operability or efficiency can be given.
Made with Metrepro (C200)



9 Gatley Road, Cheadle, Cheshire SK8 1LY Tel. 0161 428 1488 Fax. 0161 428 1479
Email. mail@andrewdawson.co.uk