



18 Whittleford Grove, Birmingham, B36 9SL

£340,000

Well presented semi detached property in the popular location of Castle Bromwich. In brief the property comprises porch, entrance hallway, lounge, dining area, kitchen, four bedrooms, bathroom, garden, garage and off road parking. The property also benefits from double glazing and central heating (both where specified)

Approach

Via driveway with ample off road parking.



Porch

Double glazed door and window to front and side and ceiling light point.

Hallway

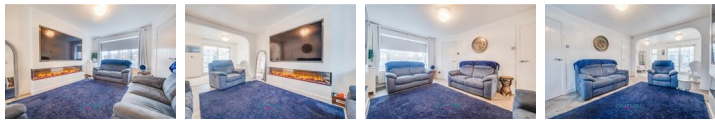
Door to front, stairs leading to first floor accommodation, radiator and ceiling light point.



Lounge

11'0 max x 15'1 (3.35m max x 4.60m)

Double glazed bow window to front, feature fire, radiator and ceiling light point.



Dining Area

14'4 x 8'5 (4.37m x 2.57m)

Double glazed window to rear, sliding door to rear and two ceiling light points.



Kitchen

Double glazed window and French doors to rear, wall base and drawer units, integrated oven, hob and extractor fan, sink with drainer and mixer tap, space for white goods, wall mounted boiler and the ceiling light points.



Conservatory

10'1 x 10'1 (3.07m x 3.07m)

Double glazed windows and French doors to rear, radiator and wall light point.



Downstairs Shower Room

Double glazed window to rear, low level W/C, sink in vanity, shower, heated towel rail and ceiling light point.



Landing

Double glazed window to side, loft access, airing cupboard, radiator and two ceiling light points. There is also an ideal space for an office area.



Bedroom One

8'0 max x 12'9 (2.44m max x 3.89m)

Double glazed window to front, built in wardrobes, radiator and ceiling light point.



Bedroom Two

11'3 max x 10'3 max (3.43m max x 3.12m max)

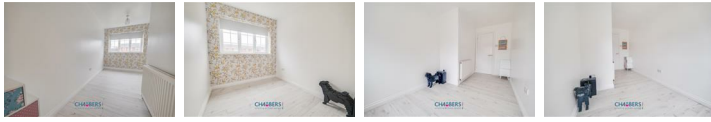
Two double glazed windows to front, radiator and two ceiling light points.



Bedroom Three

14'5 max x 7'0 max (4.39m max x 2.13m max)

Double glazed window to rear, radiator and ceiling light point.



Bedroom Four

8'1 x 9'11 (2.46m x 3.02m)

Double glazed window to rear, radiator and ceiling light point.



Bathroom

Double glazed obscured window to rear, low level W/C, sink in vanity, bath with shower fitting, heated towel rail and ceiling light point.



Garage

18'2 x 8'2 (5.54m x 2.49m)

Up and over door and two ceiling light points.

Rear Garden

()

Low maintenance rear garden, enclosed to neighbouring boundaries.



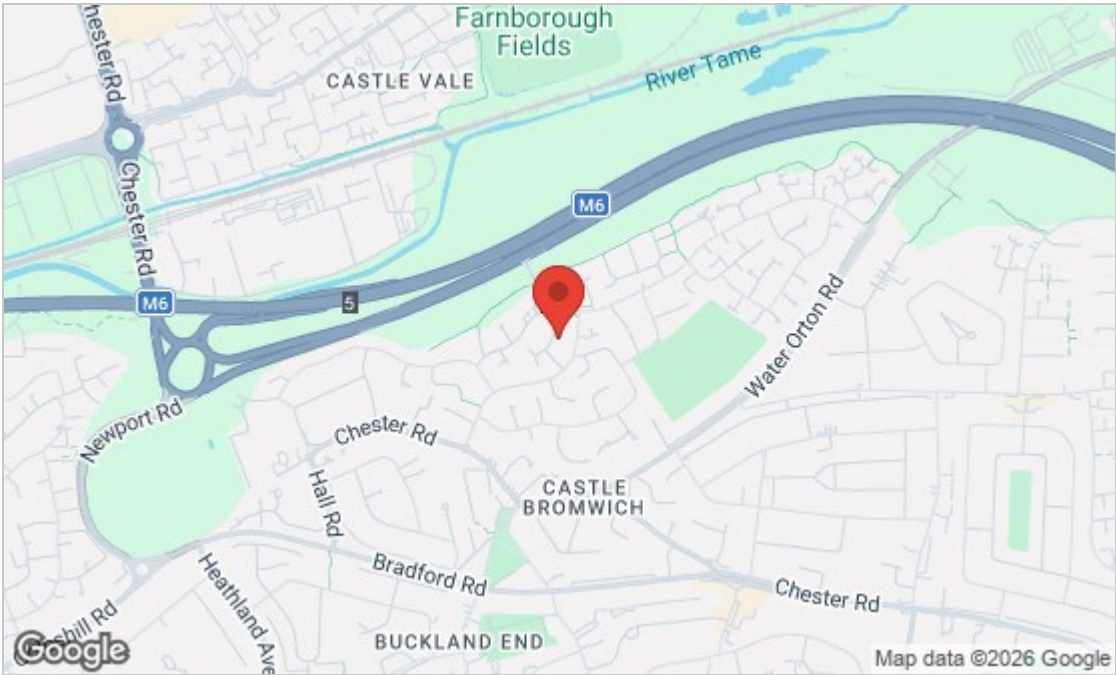
Further Information

We endeavour to make our sales particulars accurate and reliable, however they do not constitute or form part of an offer or any contract and none is to be relied upon as statements of representation or fact. Any services, systems and appliances listed in this specification have not been tested by Chambers Estate & Letting Agents and we make no guarantee as to their operating ability or efficiency. All measurements have been taken as a guide only to prospective buyers and may not be correct. Potential buyers are advised to re-check measurements and test any appliances. A buyer should ensure that a legal representative confirms all the matters relating to this title including boundaries and any other important matters.

Money Laundering Regulations: intending purchasers will be required to provide proof of identification at offer stage, a sale cannot be agreed without this.

Council Tax Band - C

EPC Rating - C



Energy Efficiency Rating		
	Current	Potential
Very energy efficient - lower running costs		
(92 plus) A		83
(81-91) B		
(69-80) C	72	
(55-68) D		
(39-54) E		
(21-38) F		
(1-20) G		
Not energy efficient - higher running costs		
England & Wales EU Directive 2002/91/EC		
Environmental Impact (CO ₂) Rating		
	Current	Potential
Very environmentally friendly - lower CO ₂ emissions		
(92 plus) A		
(81-91) B		
(69-80) C		
(55-68) D		
(39-54) E		
(21-38) F		
(1-20) G		
Not environmentally friendly - higher CO ₂ emissions		
England & Wales EU Directive 2002/91/EC		

These particulars, whilst believed to be accurate are set out as a general outline only for guidance and do not constitute any part of an offer or contract. Intending purchasers should not rely on them as statements of representation of fact, but must satisfy themselves by inspection or otherwise as to their accuracy. No person in this firms employment has the authority to make or give any representation or warranty in respect of the property.