

West End Road

Ruislip • Middlessex • HA4 6RD

PCM: £1,600 PCM



coopers
est 1986



This charming ground floor maisonette is bright and spacious throughout, and ready for a tenant to simply move into. As you enter the property a large hallway offers access to all of the properties accommodation and also a storage cupboard. The living room to the front of the home has a large bay window which floods the room with light. The family bathroom is tiled throughout and is complete with a white suite. The kitchen offers a range of base and wall units, worktops and space for integrated appliances. A door from the kitchen leads out to a private garden. The property is complete with two bedrooms. One double bedroom and a large single.

Neutral tones throughout

Maisonette

Ground floor

Two bedrooms

Living room

Kitchen

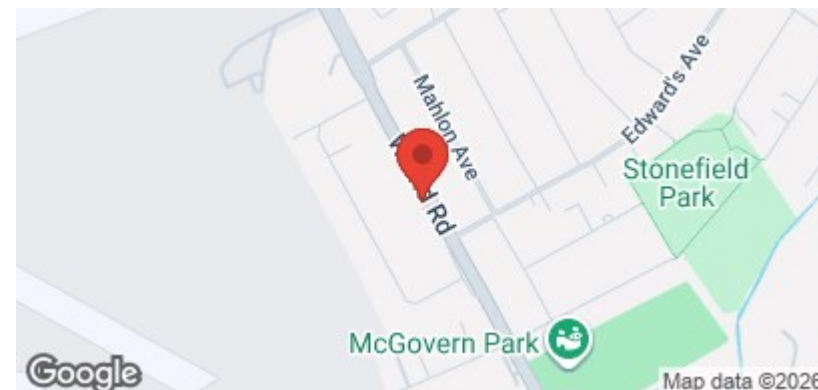
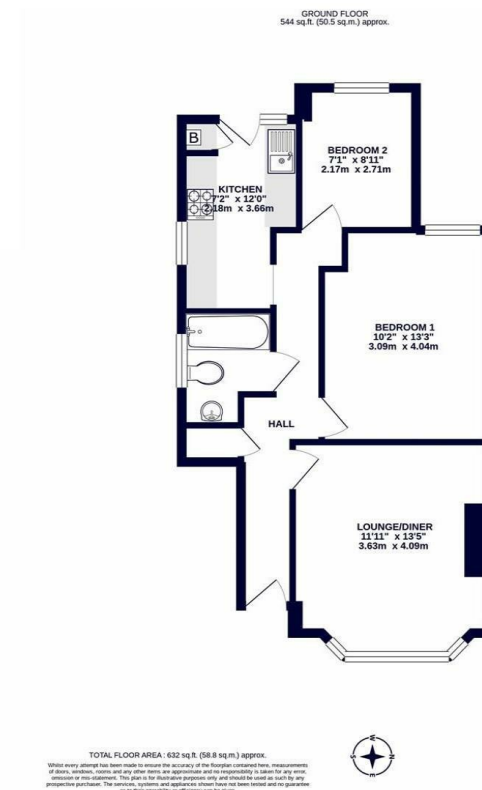
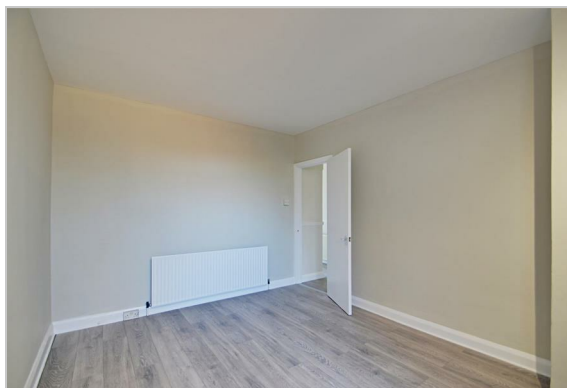
Family bathroom

Private garden

Unfurnished

Available Date

2nd February 2026



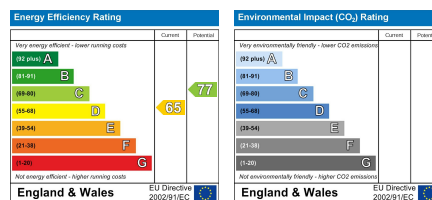
coopers
est 1986

01895 625 625

**126-128 High Street, Ruislip,
Middlesex, HA4 8LL**

rl@coopersresidential.co.uk

CoopersResidential.co.uk



Important Notice: These particulars, whilst believed to be accurate are set out as a general outline only for guidance and do not constitute any part of an offer or contract. Intending purchasers should not rely on them as statements or representation of fact, but must satisfy themselves by inspection or otherwise has the authority to make or give any representation or warranty in respect of the property.