

FAREHAM STREET, W1F

£3,000 pcm

A stylish, fully furnished studio in the heart of Tottenham Court Road, designed for modern city living with contemporary finishes, communal spaces and a 24-hour concierge.

- Studio Apartment
- Fully Furnished
- 24-Hour Concierge
- Comfort Cooling
- Oxford Street Location
- 300 ft to Nearest Station

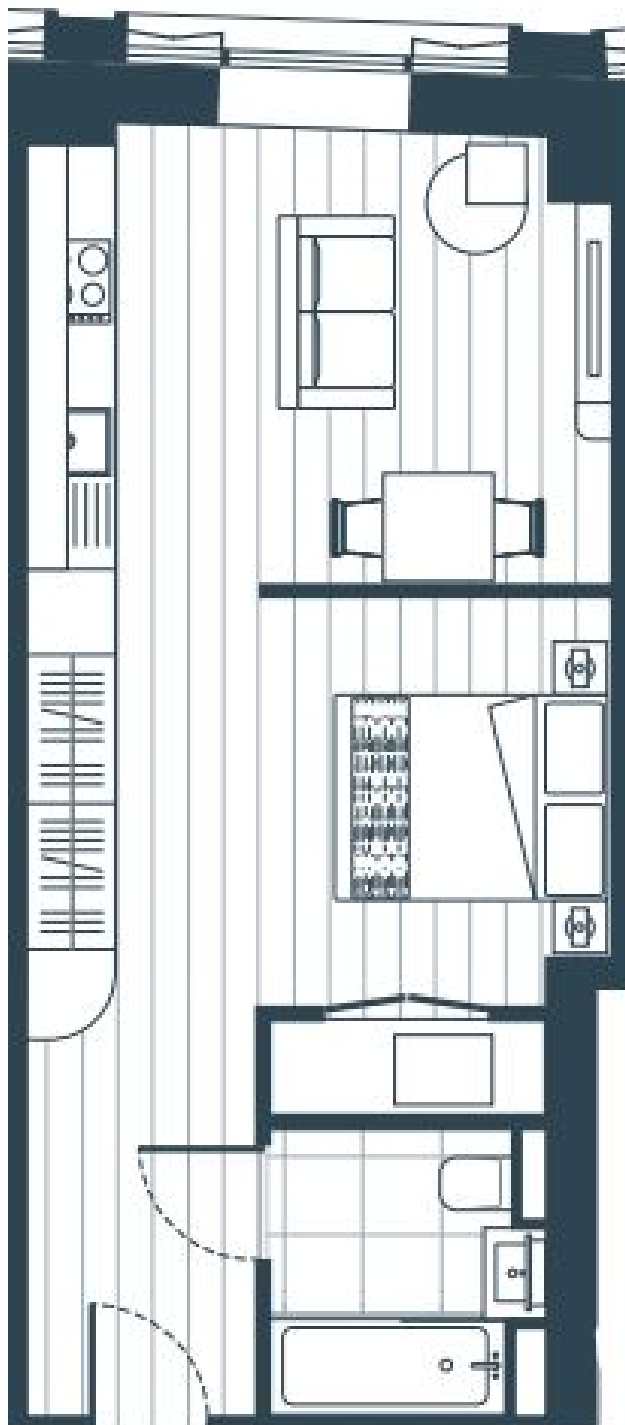


ABOUT THE HOME

Sitting above Tottenham Court Road Elizabeth Line, with Bond Street, Heathrow and Canary Wharf all minutes away, and Oxford Street, the West End and Mayfair's world-class dining right at your door.







LiFE RESIDENTIAL

252 Westminster Bridge
Road, London, SE1 7PD
Sales: 020 7476 0125
Lettings: 020 7620 1600

Energy Rating: B. We aim to make our particulars both accurate and reliable. However they are not guaranteed; nor do they form part of an offer or contract. If you require clarification on any points then please contact us, especially if you're traveling some distance to view. Please note that appliances and heating systems have not been tested and therefore no warranties can be given as to their good working order.