



Grove.

FIND YOUR HOME

7 Farmers Court, Halesowen B63 3UY

£1,100 Per Month

# Home with a view

Well-presented home with allocated parking in a private residential setting.







## Details

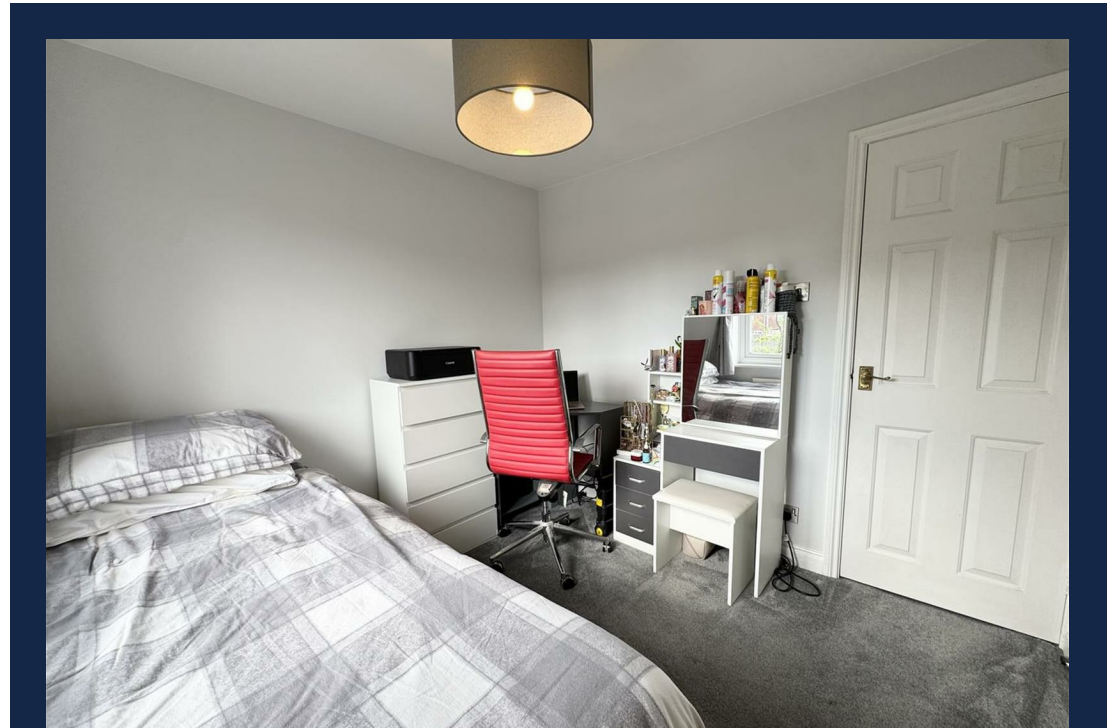
The property comprises of front entrance leading into a welcoming hallway with mat area and laminate flooring with stairs to the first floor. The living room/diner offers a bright and comfortable space, with patio doors opening out onto the rear garden. The modern kitchen is fitted with a range of wall and base units, gas hob and oven, integrated dishwasher and washing machine, moulded sink with drainer, and a window to the front, with space for additional utilities.

To the first floor, the landing provides loft access and leads to two bedrooms and house bathroom. The primary bedroom overlooks the rear, and a further bedroom to the front has a built-in storage cupboard and built-in wardrobe space. The bathroom is fitted with tiled walls, a bath with shower over, WC, and wash basin.

Outside, the garden features a patio seating area, gravel borders, planted beds, lawn, fenced boundaries, and a rear gate, along with a useful storage shed.

## Location

Located at Farmers Court in Halesowen, this property enjoys a quiet residential setting while remaining close to a range of local amenities, shops, and schools. Halesowen town centre is easily accessible, offering further retail and leisure options. Excellent transport links, including nearby access to the M5, provide convenient routes to Birmingham and surrounding areas, making it ideal for commuters.





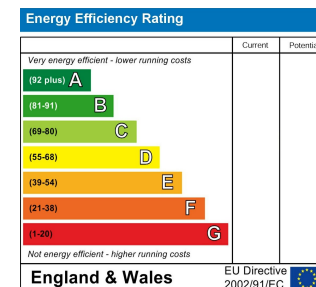


Grove.

FIND YOUR HOME







**IMPORTANT NOTICE:** 1. No description or information given whether or not these particulars and whether written or verbal (information) about the property or its value may be relied upon as a statement or representation of fact. Grove Properties Group do not have any authority to make representation and accordingly any information is entirely without responsibility of the part of Grove Properties Group or the seller. 2. The photographs (and artists impression) show only certain parts of the property at the time they were taken. Any areas, measurements or distances given are approximate only. 3. Any reference to alternations to, or use of any part of the property is not a statement that any necessary planning, building regulations or other consent has been obtained. 4. No statement is made about the condition of any service or equipment or whether they are year 2000 compliant.

**VIEWINGS:** View by appointment only with Grove Properties Group. Opening times:

Monday – Thursday 9.00AM to 5.30PM.

Friday 9.00AM – 5.00PM.

Saturday 9.00AM – 1.00PM.

# Grove.

FIND YOUR HOME

Hagley  
129 Worcester Road

Hagley  
DY9 0NN

T: 01562 270 270

E: [hagley@grovepropertiesgroup.co.uk](mailto:hagley@grovepropertiesgroup.co.uk)

W: [www.grovepropertiesgroup.co.uk](http://www.grovepropertiesgroup.co.uk)