



A FOUR BEDROOM HOUSE LOCATED IN A QUIET CUL-DE-SAC WITH NO CHAIN

Arnett Close, Rickmansworth, WD3 4DB

ROBSONS

Arnett Close, Rickmansworth, WD3 4DB

**DETACHED • FOUR BEDROOMS • OPEN-PLAN
KITCHEN/LIVING/DINING ROOM • TWO
RECEPTION ROOMS • UTILITY ROOM •
DOWNSTAIRS W/C • FAMILY BATHROOM •
REAR GARDEN • OFF-STREET PARKING •
CHAIN FREE**

Description

Situated within a quiet cul-de-sac in Rickmansworth and offered to the market with no onward chain, this well-presented detached four-bedroom family home provides spacious and versatile accommodation throughout.

The ground floor comprises two generous reception rooms, a convenient downstairs w/c, a utility room, and a stunning open-plan kitchen/living/dining area. The modern kitchen forms the heart of the home, with sliding doors opening directly onto the rear garden, creating an ideal space for both family living and entertaining.

To the first floor, there are four bedrooms, all served by a family bathroom.





Externally, the property benefits from a private rear garden featuring a patio area, perfect for outdoor dining, with steps leading up to a beautifully maintained lawn.

To the front, a driveway provides ample off-street parking.

Location

Rickmansworth town centre has a wide range of boutique shops, coffee houses, restaurants and major supermarkets. The Metropolitan and Chiltern line train services connect you to London Baker Street, Marylebone Station and beyond. The M25 motorway is available at both junction 17 and 18, connecting you to the national motorway network. Major London airports are also within reach. The area is well served for good quality private and state schools for all ages. Chorleywood and Rickmansworth offer everything for the sporting individual from rugby, cricket, football, tennis, horse riding and golf. Rickmansworth Aquadrome is an ideal setting for walks, sailing, fishing and water skiing.

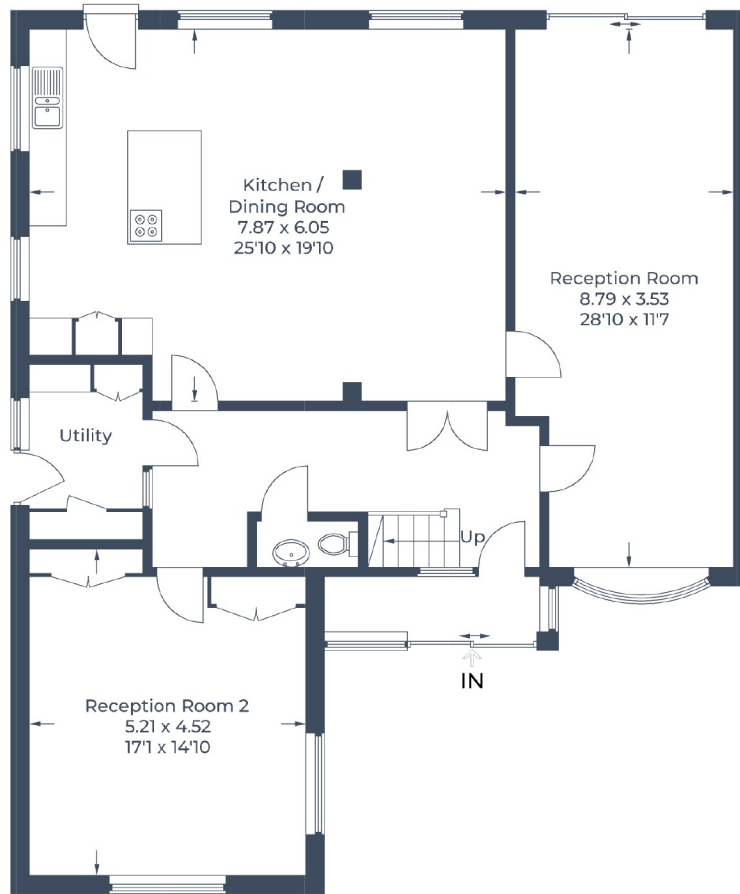
Additional Information

Tenure: Freehold
Local Authority: Three Rivers
Council Tax Band: G
Energy Efficiency Rating: C

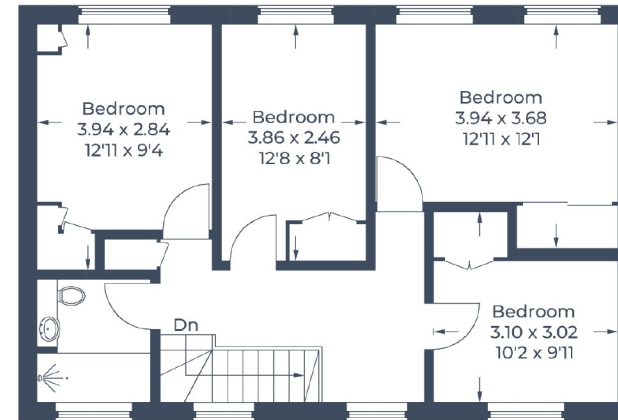
For additional information, please refer to www.robsonsworld.com or call us on: 01923 777762.



Approximate Gross Internal Area
Ground Floor = 127.6 sq m / 1,373 sq ft
First Floor = 58.1 sq m / 625 sq ft
Total = 185.7 sq m / 1,998 sq ft



Ground Floor



First Floor

Illustration for identification purposes only,
measurements are approximate, not to scale.
© CJ Property Marketing Produced for Robsons

ROBSONS

130 High Street, Rickmansworth WD3 1AB
Tel: 01923 777762 Email: rickmansworth@robsonsweb.com
www.robsonsweb.com

SCAN TO VISIT



OUR WEBSITE