

Fivens Place, Horsham

Offers Over £800,000

4 3 1



An Extended Detached Family Home located at the end of a Small Cul De Sac, boasting a generous South Facing Garden, stunning 30ft x 19ft Kitchen Dining Room and Two En Suite Shower Rooms.

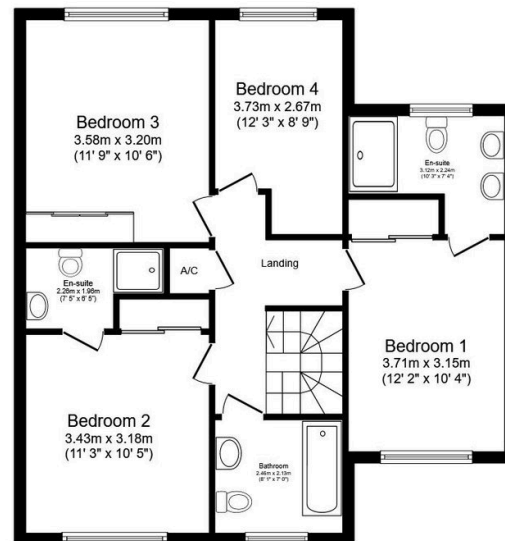
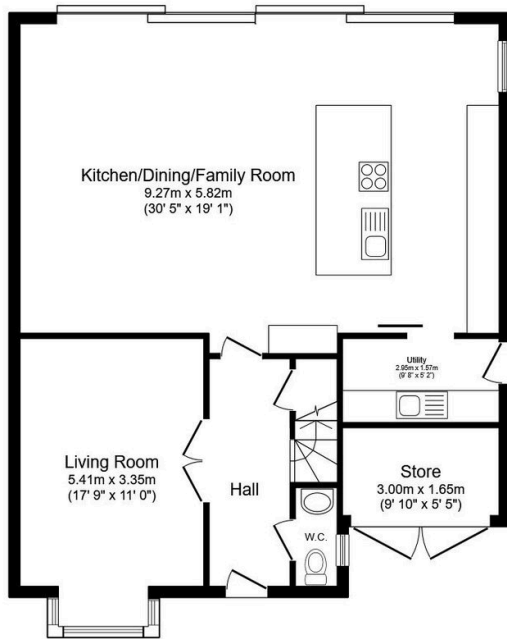
Tenure: Freehold

Council Tax: Band F

EPC Rating: Current C - Potential B

Key Features

- Watch Our Video Tour
- 30ft x 19ft Kitchen Family Room
- Private South Facing Rear Garden
- Luxurious Family Bathroom
- Cul De Sac Location
- Extended Detached Family Home
- 17ft x 11ft Bay Fronted Living Room
- Four Generous Bedrooms
- Two En Suite Shower Rooms
- Close To Popular Schools



Total floor area: 169.4 sq.m. (1,823 sq.ft.)

This floor plan is for illustrative purposes only. It is not drawn to scale. Any measurements, floor areas (including any total floor area), openings and orientations are approximate. No details are guaranteed, they cannot be relied upon for any purpose and do not form any part of any agreement. No liability is taken for any error, omission or misstatement. A party must rely upon its own inspection(s). Powered by www.Propertybox.io